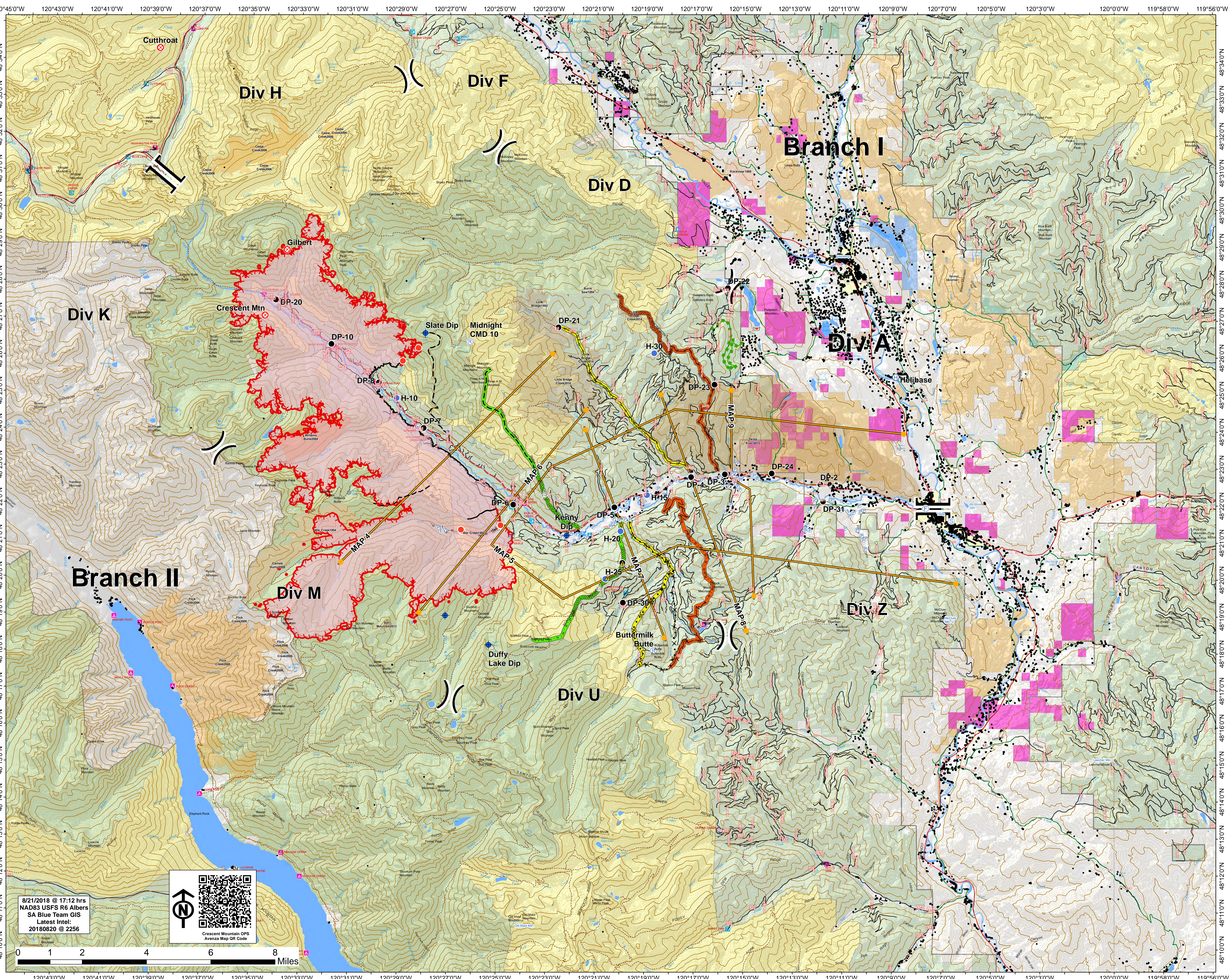




Operations
Map
Approx Acreage:
31,091

- Wildfire Daily Fire Perimeter
 - Structure
 - Wilderness
 - Ranger District
 - Roadless Conservation
 - Diamond Creek Fire
 - Camp
 - Dip Site
 - Drop Point
 - Fire Origin
 - Fire Station
 - Goat
 - Helibase
 - Hot Spot
 - Incident Command Post
 - Lookout
 - Pump
 - Repeater
 - Receivable/Map PI
 - Safety Zone
 - Sling Site
 - Staging Area
 - Water Source
 - Value at Risk
 - Division Break
 - Branch Break
 - Uncontrolled Fire Edge
 - Completed Line
 - Completed Dashed Line
 - H - H Completed Hand Line
 - R - R Road as Completed Line
 - Proposed Dashed Line
 - Planned Fire Line
 - Escape Route
 - Management Action Point
 - Temp River Road
 - Highway
 - County Road
 - USFS Road
 - Trail
- Contingency**
- primary
 - alternate
 - contingency
- Fire History**
- 1982 - 1999
 - 2004
 - 2006
 - 2008
 - 2013
 - 2014
 - 2015
 - 2016
- OWNER**
- BLM
 - FS
 - MSF
 - NPS
 - PUD
 - PVT
 - USFWS
 - W
 - City or Municipality
 - W/C Dept or Party
 - WA State Parks
 - Washington Dept



8/21/2018 @ 17:12 hrs
NAD83 USFS R6 Albers
SA Blue Team GIS
Latest Intel:
20180820 @ 2256

