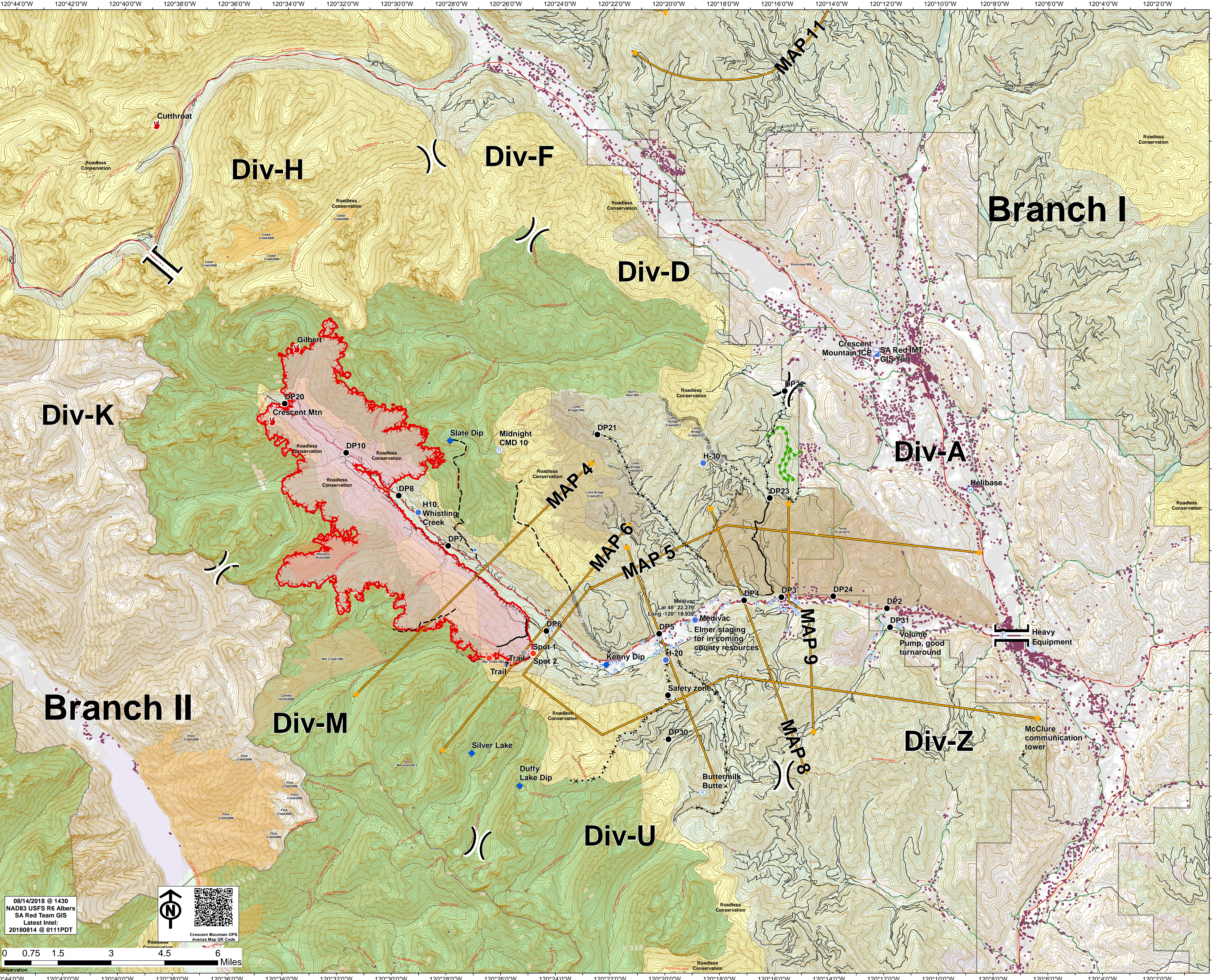




Operations
Map

- Camp
- Dip Site
- Drop Point
- Fire Location
- Fire Station
- Gas
- Helibase
- Helispot
- Hot Spot
- Incident Command Post
- Internet Access
- Lookout
- Pump
- Repeater
- Sling Site
- Staging Area
- Water Source
- Value at Risk
- Unknown
- Other
- Division Break
- Branch Break

- Uncontrolled Fire Edge
- Completed Line
- Completed Doser Line
- H - H Completed Hand Line
- R - R Road as Completed Line
- Proposed Doser Line
- Planned Fire Line
- Escape Route
- Management Action Point
- Other
- Temp River Road
- County Road
- City Road
- USFS Road
- Trail
- Contour 500
- Contour 100
- Wildfire Daily Fire Perimeter
- Structure
- Fire History
- 1992 - 1999
- 2004
- 2006
- 2008
- 2013
- 2014
- 2015
- Roadless Conservation
- Ranger District
- Wilderness
- FR
- NPS
- PVT
- BLM
- USFS



08/14/2018 @ 1430
NAD83 USFS R6 Albers
SA Red Team GIS
Latest Intel:
20180814 @ 0111PDT

