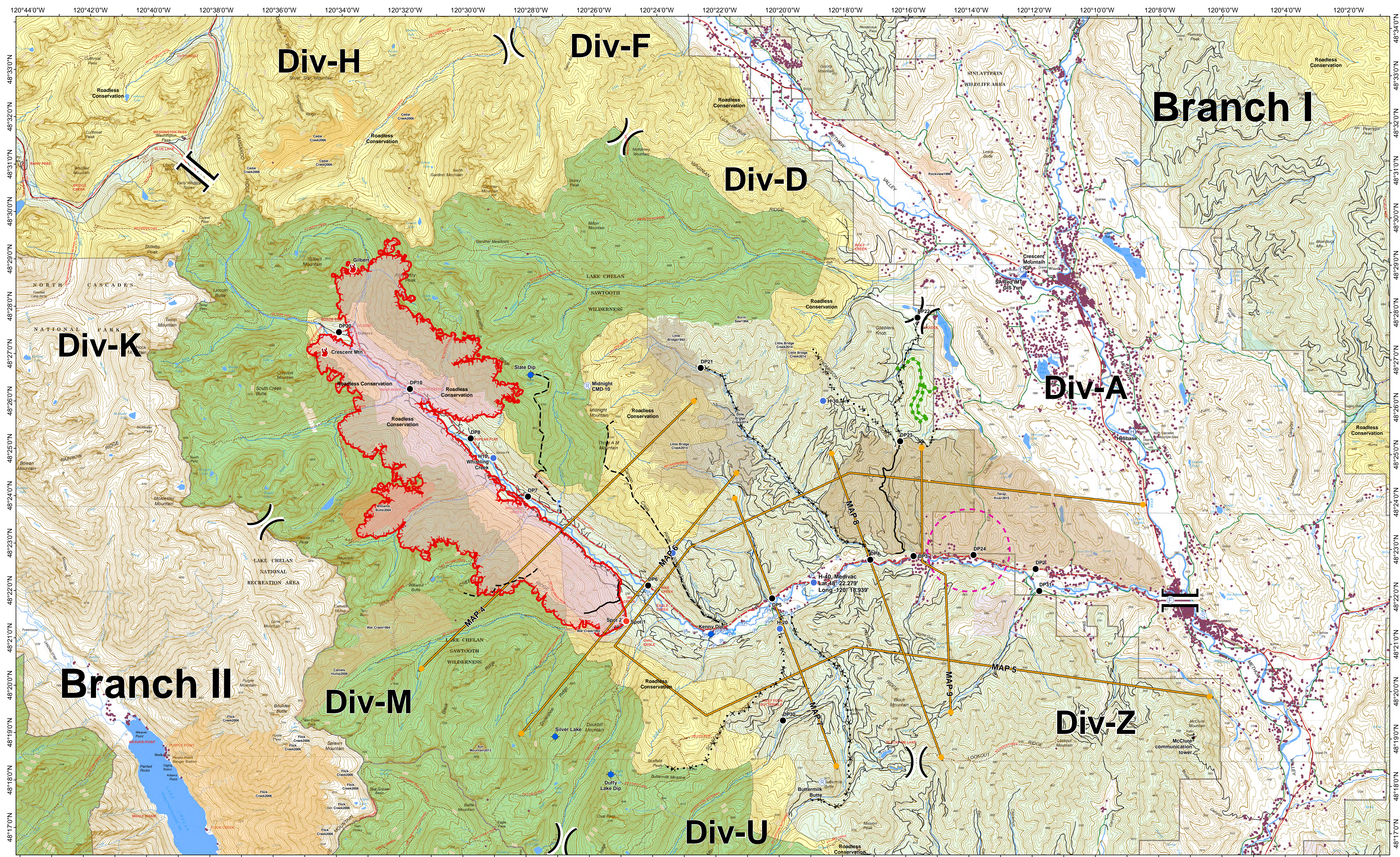




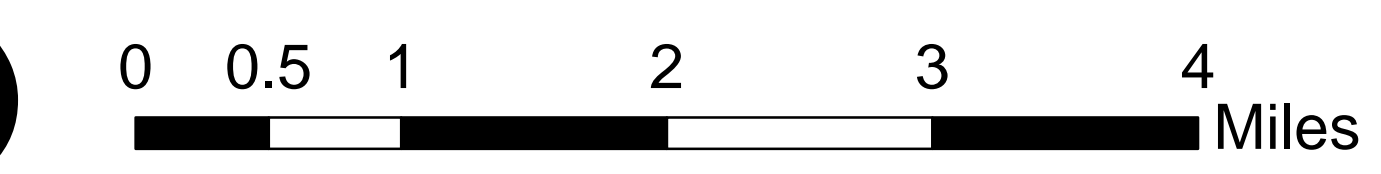
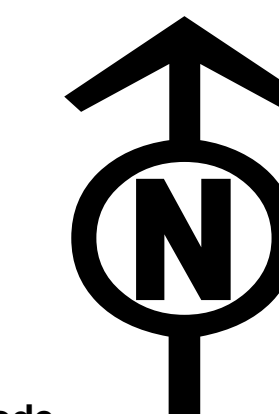
# Operations Map

# Crescent Mountain Fire WA-OWF-000428

08/13/2018



<ul style="list-style-type: none"> <li>⊙ Camp</li> <li>● Drop Point</li> <li>🔥 Fire Location</li> <li>🚁 Helibase</li> <li>⬆️ Helispot</li> <li>📶 Incident Command Post</li> <li>Ⓜ️ Repeater</li> <li>🏠 Structures</li> <li>🔴 Uncontrolled Fire Edge</li> <li>⚡ Road as Completed Line</li> <li>⎓ Division Break</li> <li>⎓ Branch Break</li> <li>ⓧ Proposed Dozer Line</li> </ul>	<ul style="list-style-type: none"> <li>— Planned Fire Line</li> <li>— Completed Line</li> <li>👉 Management Action Point</li> <li>🔴 Restricted Operational Zone</li> <li>🔴 Wildfire Daily Fire Perimeter</li> <li>📦 Ranger District</li> </ul>	<p><b>Fire_History</b></p> <ul style="list-style-type: none"> <li>2008</li> <li>1992 - 1999</li> <li>2004</li> <li>2006</li> <li>2013</li> <li>2014</li> <li>2015</li> </ul>	<p><b>OWNER</b></p> <ul style="list-style-type: none"> <li>FS</li> <li>NPS</li> <li>PVT</li> <li>STATE</li> <li>USFWS</li> <li>Roadless Conservation</li> </ul>	<ul style="list-style-type: none"> <li>🛣️ Twisp River Road</li> <li>🛣️ Highway</li> <li>🛣️ County Road</li> <li>🛣️ City Road</li> <li>🛣️ USFS road</li> <li>🔴 ROZ Crescent fire</li> </ul>
---	---	--	---	--



08/12/2018 @ 1918  
 NAD 83 USFS R6 Albers (Meters)  
 SA Red Team GIS  
 Latest Intel: 20180812 @ 0040PDT