

IAP Map

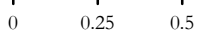
Angel Springs Fire
WA-NES-001801
August 7, 2018
Day Shift

Approx. 5,043 acres
8/6/2018, 1920 hrs

Div A



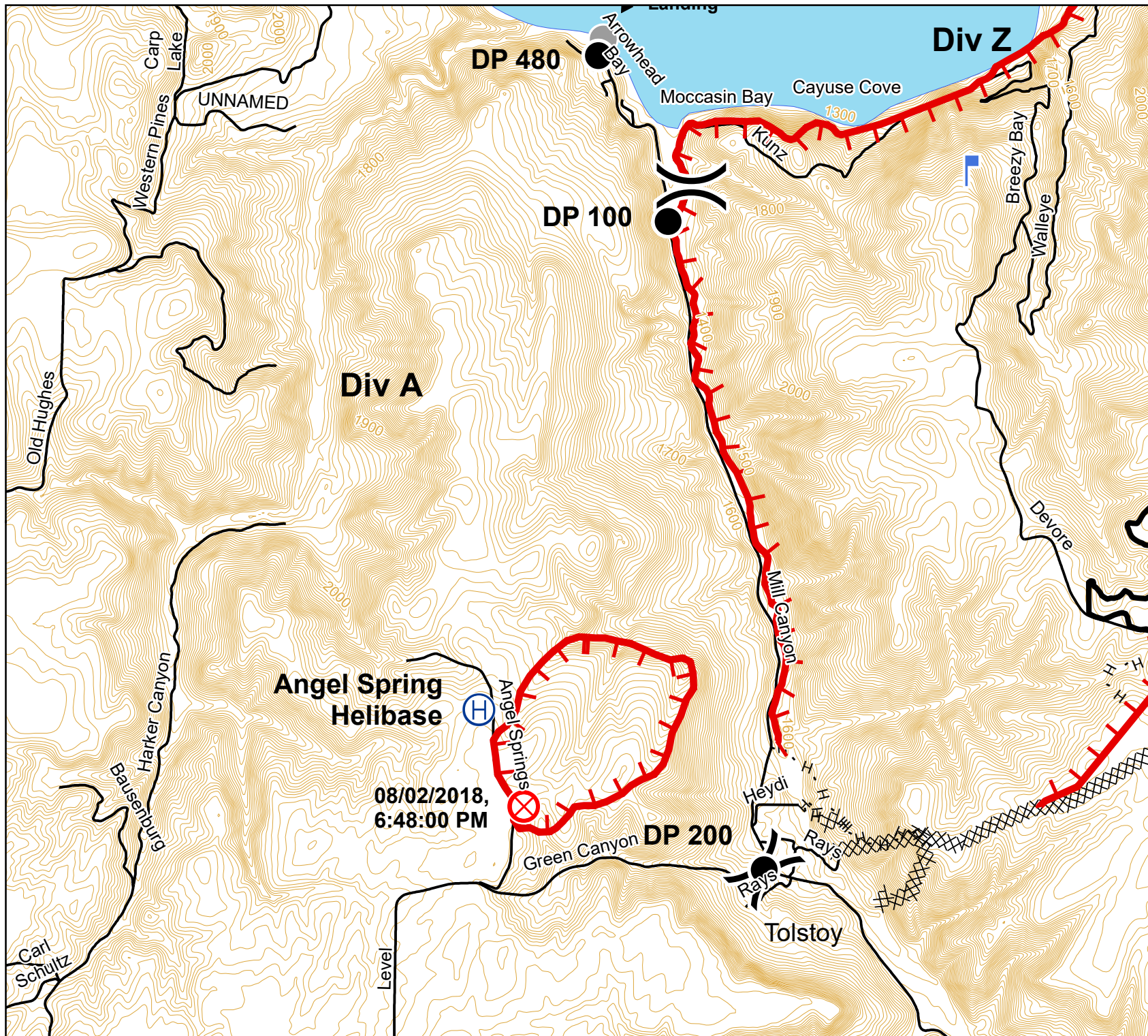
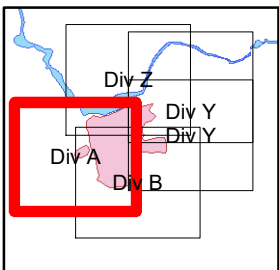
Miles



Legend

- Drop Point
- Other
- ⊗ Fire Origin
- ⊗ Helibase
- └ Lookout
- ⌋ Division Break

- └ Uncontrolled Fire Edge
- Completed Line
- ⊗ Completed Dozer Line
- H - H Completed Hand Line



IAP Map

Angel Springs Fire
WA-NES-001801
August 7, 2018
Day Shift

Approx. 5,043 acres
8/6/2018, 1920 hrs

Div B



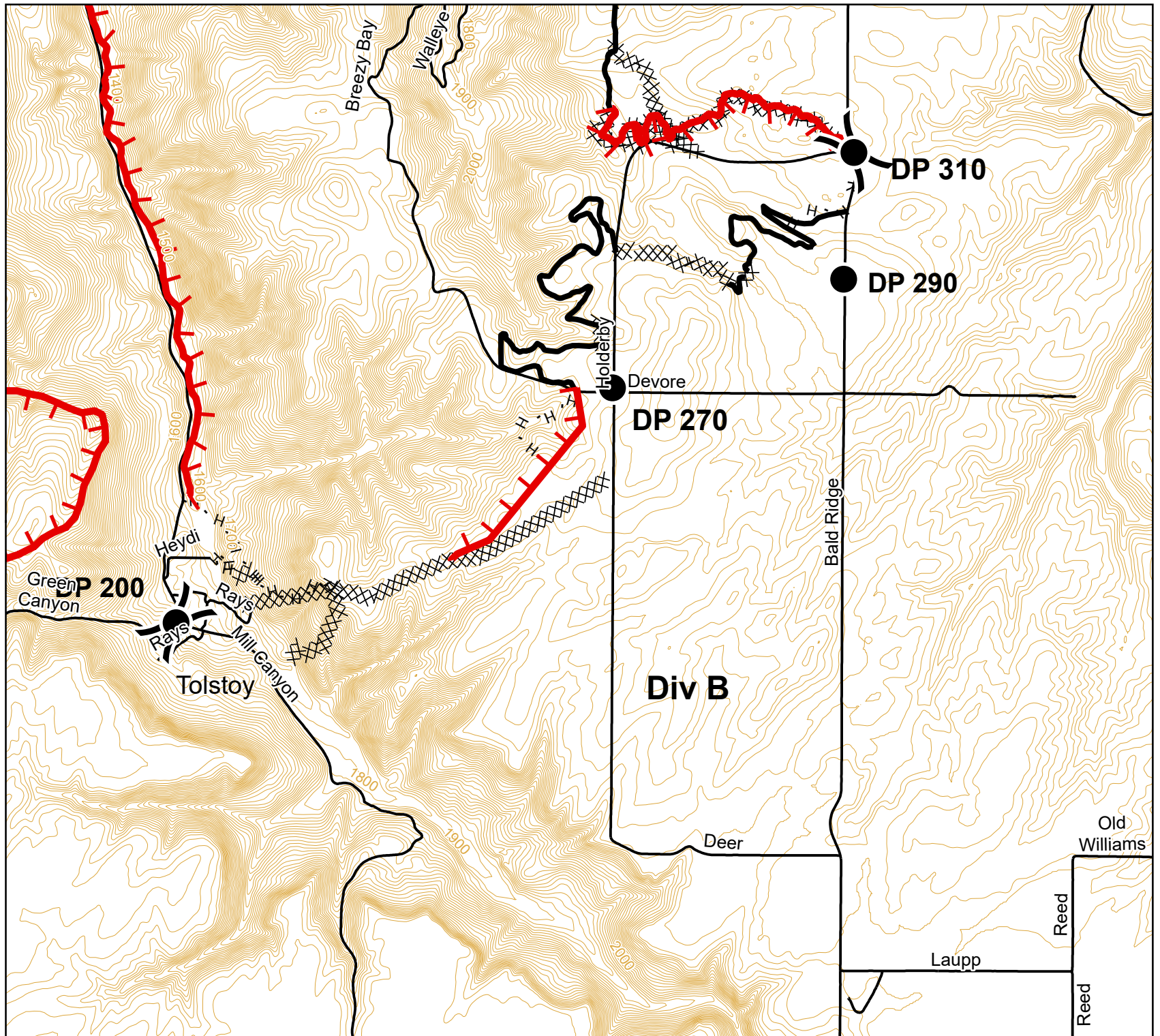
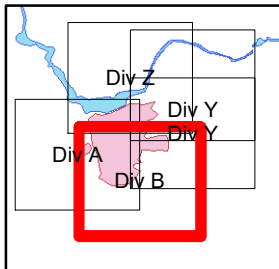
Miles

0 0.25 0.5

Legend



- Uncontrolled Fire Edge
- Completed Line
- Completed Dozer Line
- Completed Hand Line
- Road as Completed Line



IAP Map

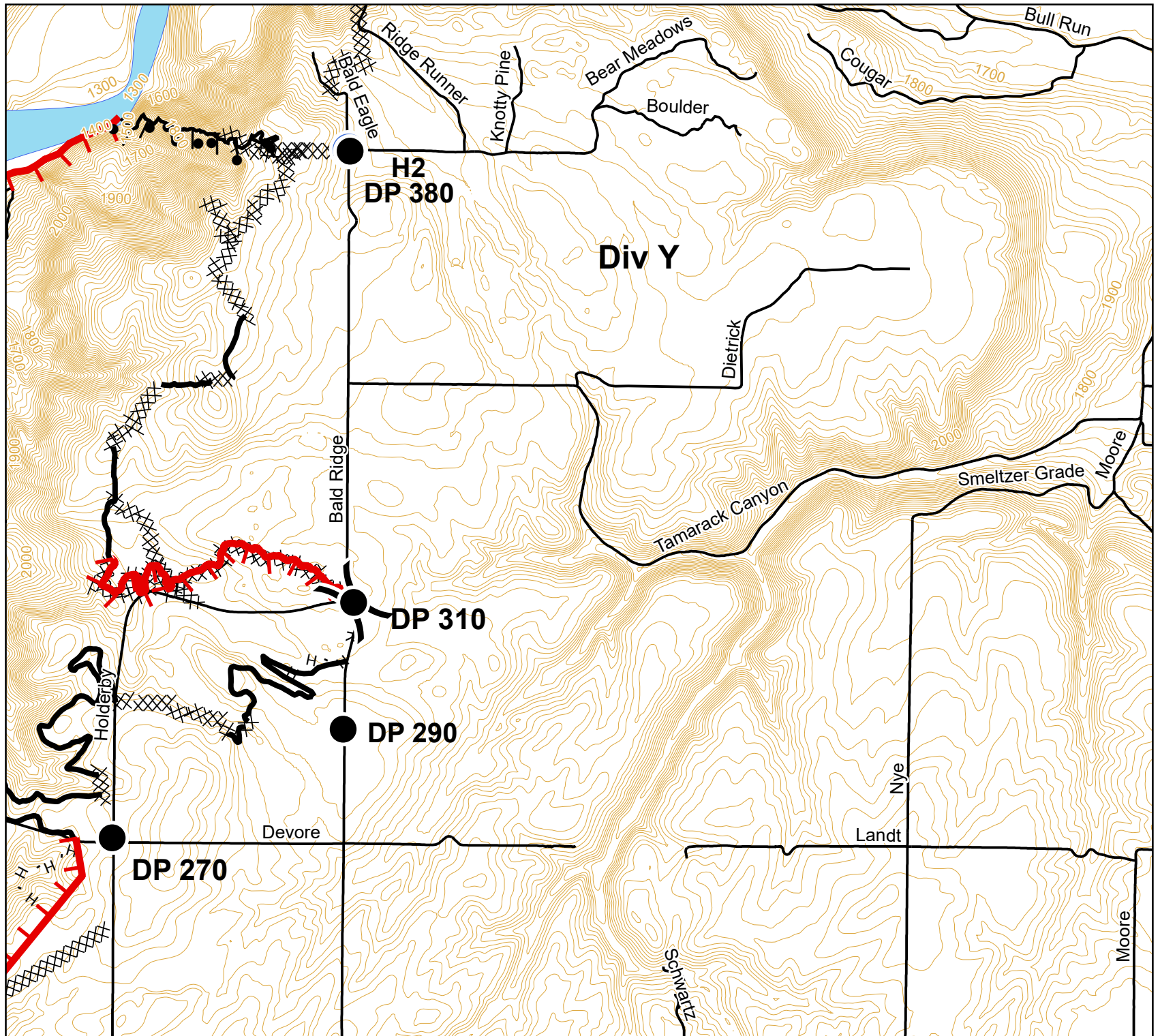
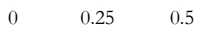
Angel Springs Fire
WA-NES-001801
August 7, 2018
Day Shift

Approx. 5,043 acres
8/6/2018, 1920 hrs

Div Y

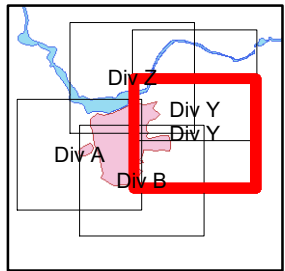


Miles



Legend

- Drop Point
- Helispot
- Uncontrolled Fire Edge
- Completed Line
- XXXXX Completed Dozer Line
- H - H Completed Hand Line
- R - R Road as Completed Line
- Completed Burnout



IAP Map

Angel Springs Fire
WA-NES-001801
August 7, 2018
Day Shift

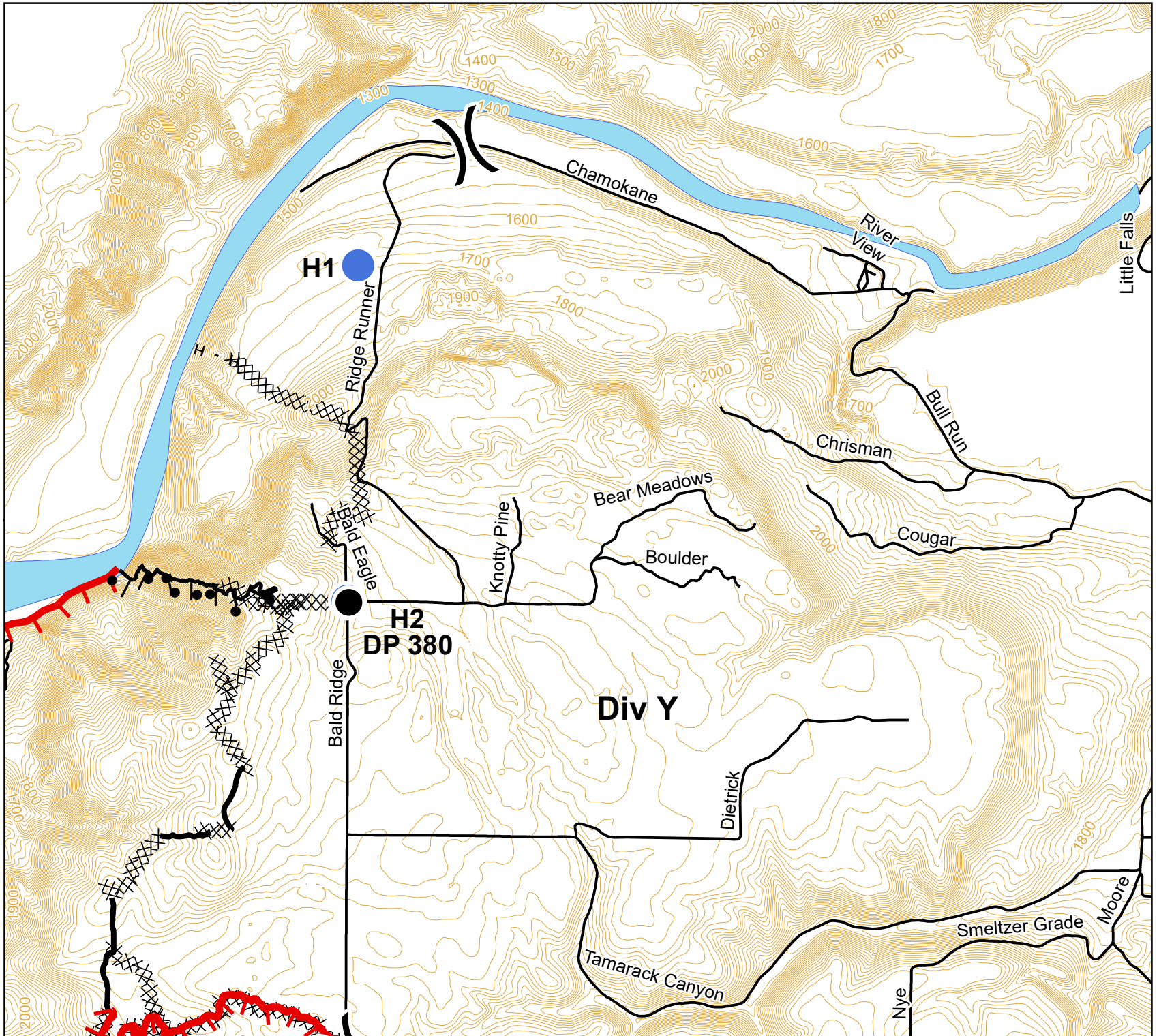
Approx. 5,043 acres
8/6/2018, 1920 hrs

Div Y



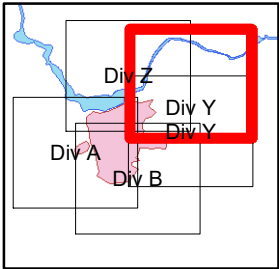
Miles

0 0.25 0.5



Legend

- Drop Point
- Helispot
- Division Break
- Uncontrolled Fire Edge
- Completed Line
- Completed Dozer Line
- Completed Hand Line
- Completed Burnout



IAP Map

Angel Springs Fire
WA-NES-001801
August 7, 2018
Day Shift

Approx. 5,043 acres
8/6/2018, 1920 hrs

Div Z



Miles

0 0.25 0.5

Legend

- Drop Point
- Other
- Helispot
- Division Break
- Lookout

- Uncontrolled Fire Edge
- Completed Line
- Completed Dozer Line
- Completed Hand Line
- Completed Burnout

