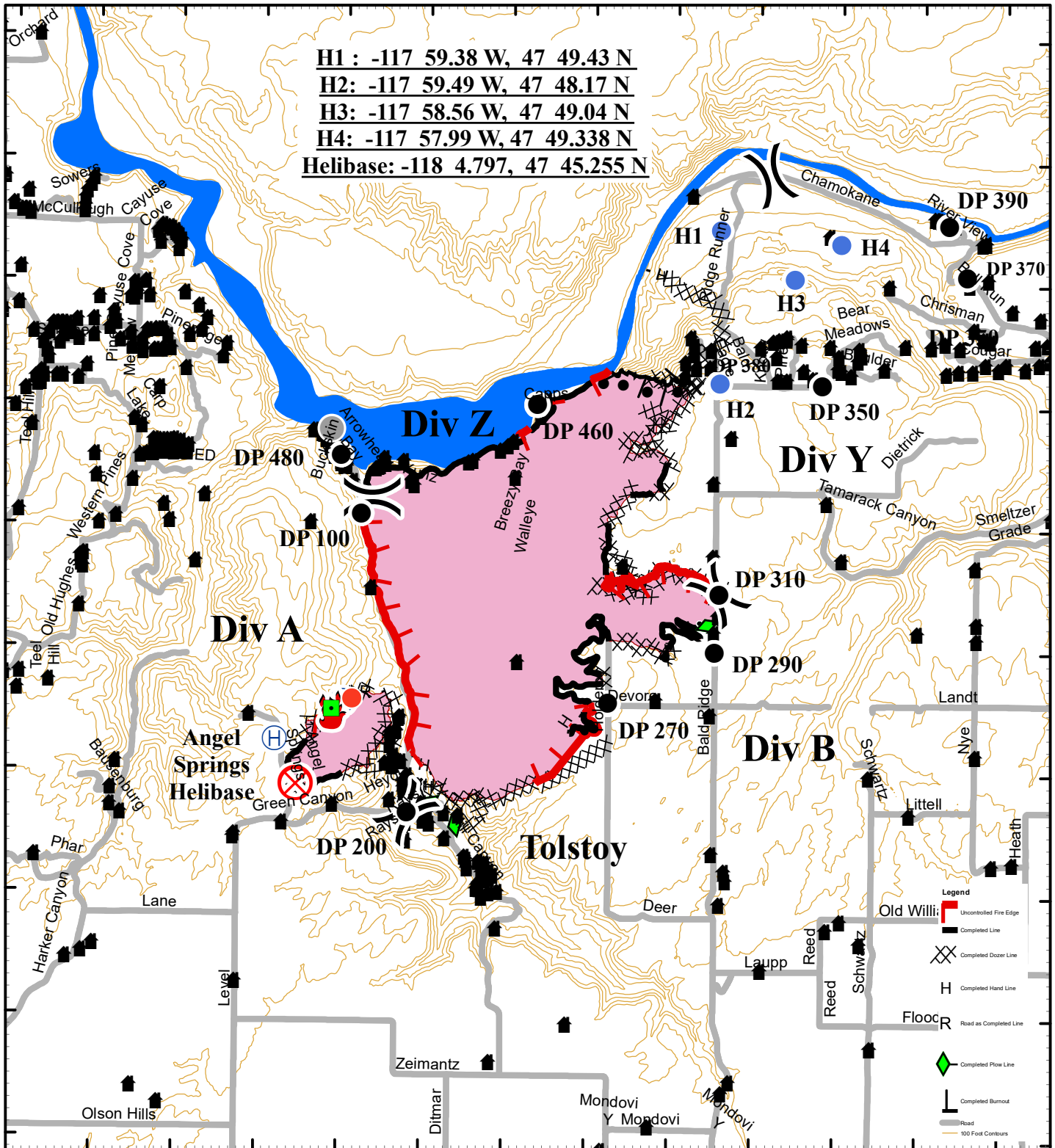


118°8'W 118°7'W 118°6'W 118°5'W 118°4'W 118°3'W 118°2'W 118°1'W 118°0'W 117°59'W 117°58'W 117°57'W 117°56'W

47°51'N
47°50'N
47°49'N
47°48'N
47°47'N
47°46'N
47°45'N
47°44'N
47°43'N
47°42'N

47°51'N
47°50'N
47°49'N
47°48'N
47°47'N
47°46'N
47°45'N
47°44'N
47°43'N
47°42'N

H1 : -117 59.38 W, 47 49.43 N
H2: -117 59.49 W, 47 48.17 N
H3: -117 58.56 W, 47 49.04 N
H4: -117 57.99 W, 47 49.338 N
Helibase: -118 4.797, 47 45.255 N



Air Operations Map
August 9, 2018
Operational Period

Angel Springs Fire
WA-NES-001801

Approximatley 5,081 ac
08/08/2018 1900 hrs

NAD 1983 UTM Zone 11 N
Lat Long Grid
Degrees, Decimal Minutes

Legend

- Wildfire Daily Fire Perimeter
- Spokane River
- 100 Foot Contours

- Dozer Line
- Hand Line
- Plow Line
- Burnout
- Fire Location
- Helibase
- Other
- Road
- 100 Foot Contours
- Uncontrolled Fire Edge
- Completed Dozer Line
- Completed Hand Line
- Road as Completed Line
- Completed Plow Line
- Completed Burnout



NOT TO SCALE



Prepared by:
 Joseph Ulozas
 08/09/2018 0700 hrs

