

IAP Map

Angel Springs Fire
WA-NES-001801
August 9, 2018
Day Shift

Approx. 5,081 acres
8/8/2018, 1900 hrs

Div A



Miles

0 0.25 0.5

Legend

- Drop Point
- Hot Spot
- 🔥 Fire Location
- ⊙ Water Source
- ⊗ Fire Origin
- Other
- ⊕ Helibase
- ⌋ Division Break

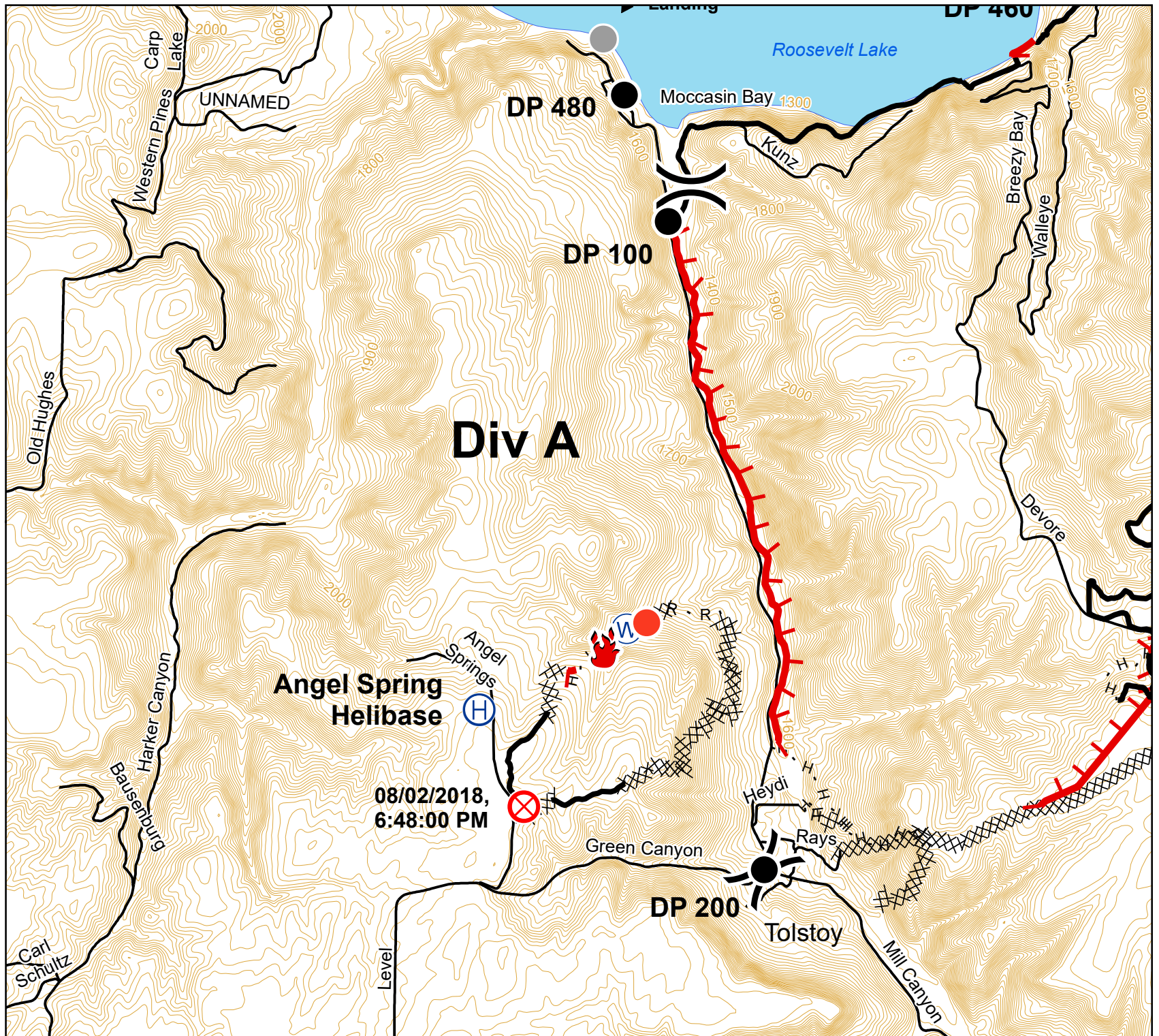
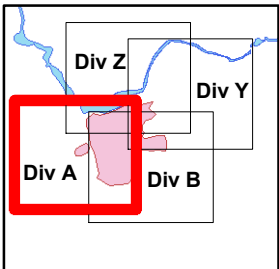
Uncontrolled Fire Edge

Completed Line

Completed Dozer Line

H - H Completed Hand Line

R - R Road as Completed Line



IAP Map

Angel Springs Fire
WA-NES-001801
August 9, 2018
Day Shift

Approx. 5,081 acres
8/8/2018, 1900 hrs

Div B



Miles

0 0.25 0.5

Legend

● Drop Point) Division Break

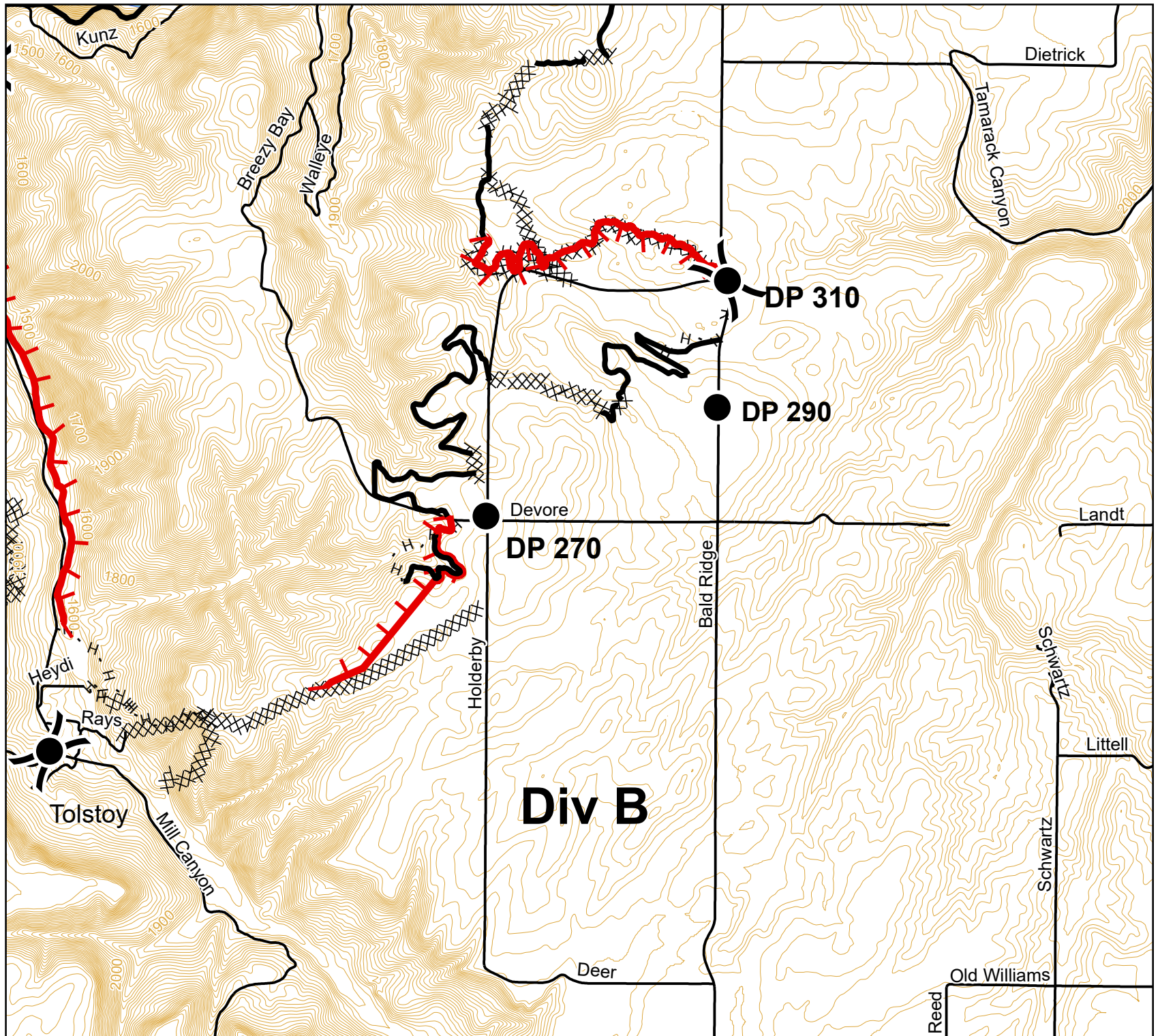
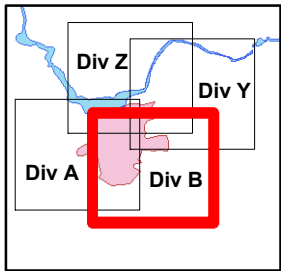
┌ Uncontrolled Fire Edge

— Completed Line

XXXXX Completed Dozer Line

H - H Completed Hand Line

R - R Road as Completed Line



IAP Map

Angel Springs Fire
WA-NES-001801
August 9, 2018
Day Shift

Approx. 5,081 acres
8/8/2018, 1900 hrs

Div Y

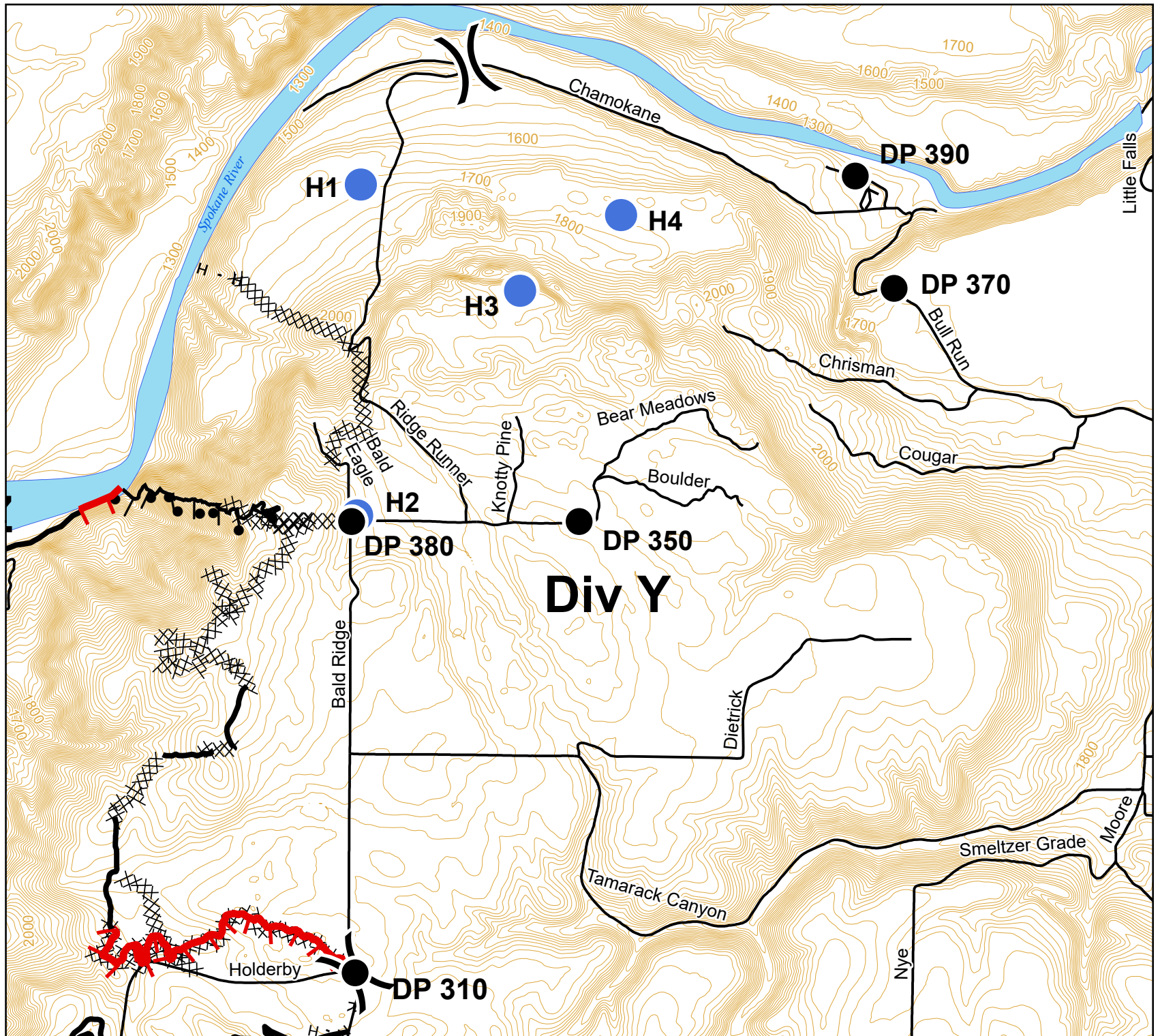
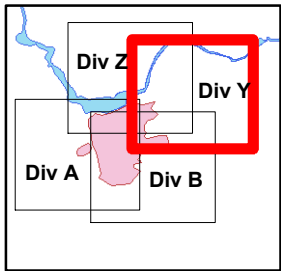


Miles

0 0.25 0.5

Legend

- Drop Point
- Helispot
- Uncontrolled Fire Edge
- Completed Line
- XXXXX Completed Dozer Line
- H - H Completed Hand Line
- R - R Road as Completed Line
- Completed Burnout



IAP Map

Angel Springs Fire
WA-NES-001801
August 9, 2018
Day Shift

Approx. 5,081 acres
8/8/2018, 1900 hrs

Div Z



Miles

0 0.25 0.5

Legend

- Drop Point
- Helispot
- Other
-) Division Break

Uncontrolled Fire Edge

Completed Line

Completed Dozer Line

H - H Completed Hand Line

Completed Burnout

