

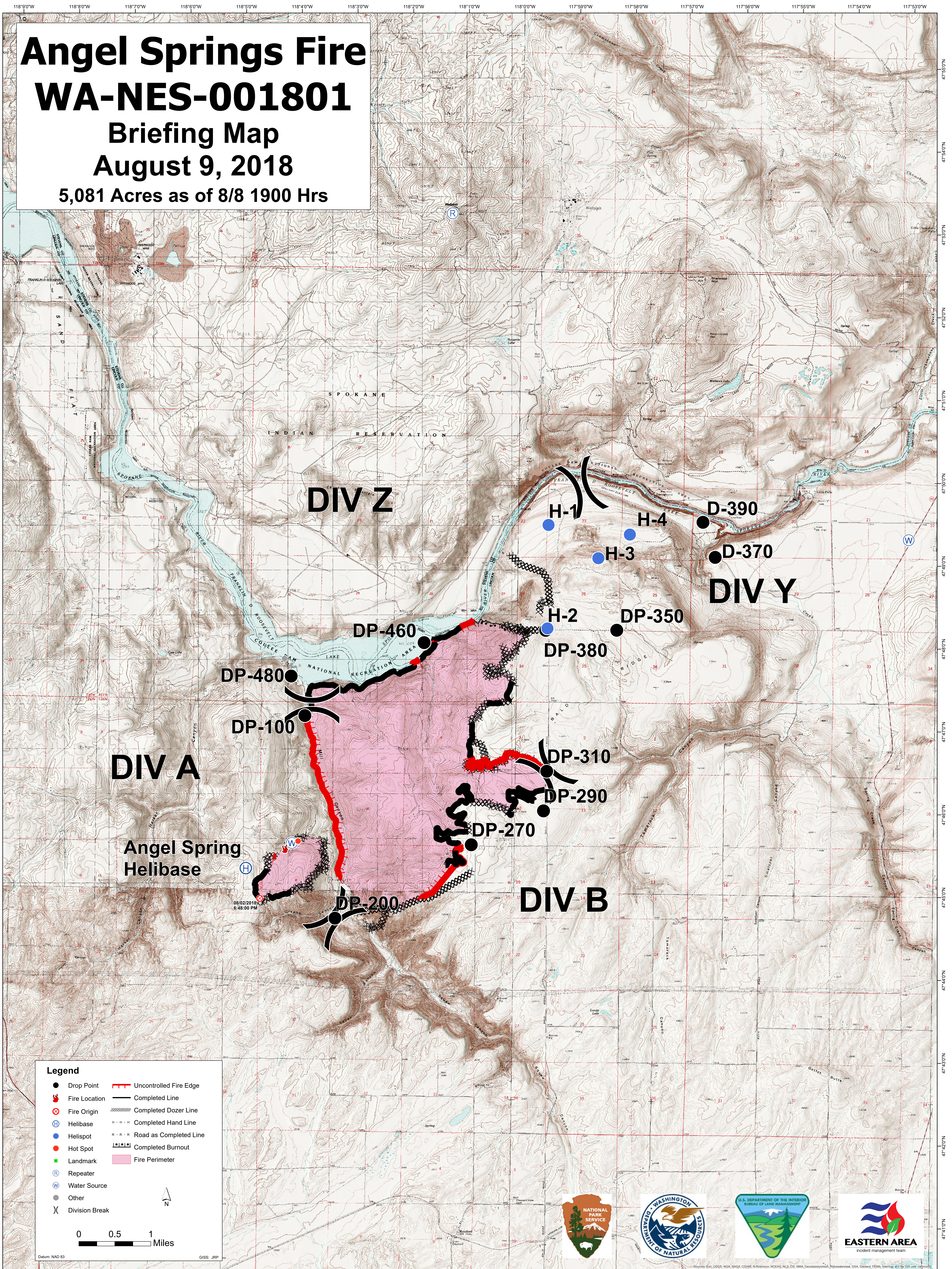
Angel Springs Fire

WA-NES-001801

Briefing Map

August 9, 2018

5,081 Acres as of 8/8 1900 Hrs



DIV A

DIV Z

DIV Y

DIV B

Angel Spring Helibase

Legend

- Drop Point
- 🔥 Fire Location
- ⊗ Fire Origin
- Ⓜ Helibase
- Helispot
- Hot Spot
- Landmark
- Ⓜ Repeater
- Ⓜ Water Source
- Other
- ⌘ Division Break
- Uncontrolled Fire Edge
- Completed Line
- ⊘ Completed Dozer Line
- Completed Hand Line
- Road as Completed Line
- ⊘ Completed Burnout
- Fire Perimeter

0 0.5 1 Miles

Datum: NAD 83 GISS: JRP

