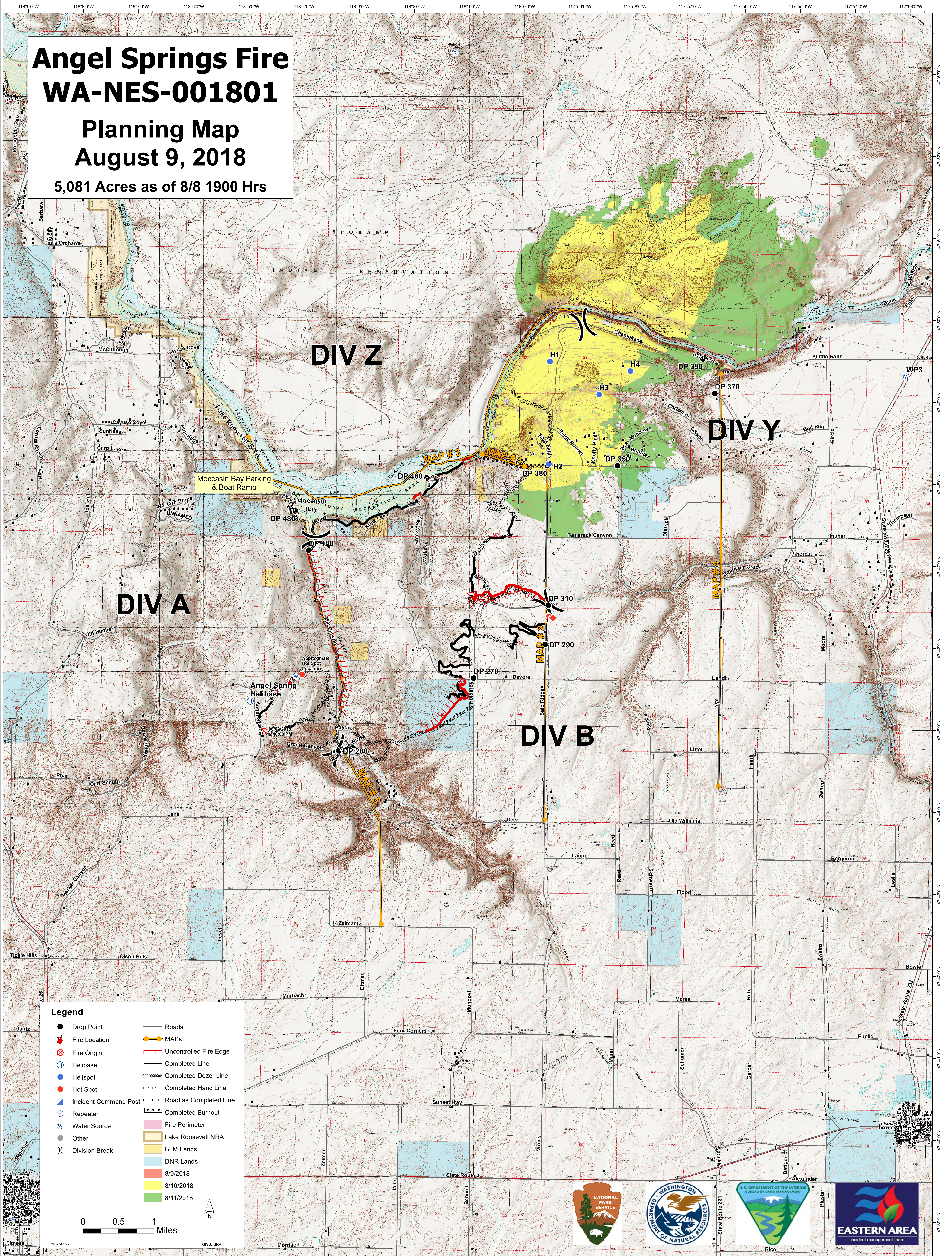


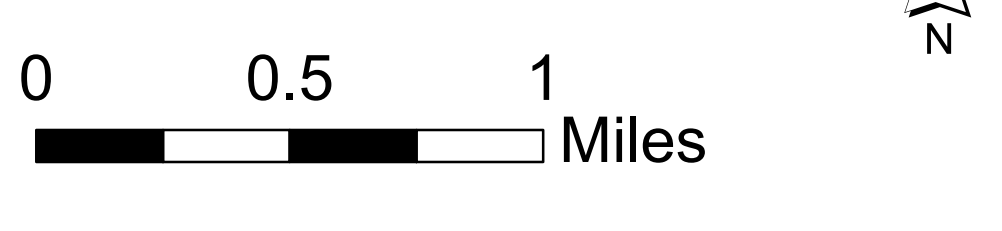
Angel Springs Fire WA-NES-001801

Planning Map August 9, 2018

5,081 Acres as of 8/8 1900 Hrs



- Legend**
- Drop Point
 - 🔥 Fire Location
 - ⊗ Fire Origin
 - ⊕ Helibase
 - Helispot
 - Hot Spot
 - Ⓜ Incident Command Post
 - Ⓜ Repeater
 - Ⓜ Water Source
 - Other
 - ⌘ Division Break
 - Roads
 - MAPs
 - Uncontrolled Fire Edge
 - Completed Line
 - Completed Dozer Line
 - Completed Hand Line
 - Road as Completed Line
 - Completed Burnout
 - Fire Perimeter
 - Lake Roosevelt NRA
 - BLM Lands
 - DNR Lands
 - 8/9/2018
 - 8/10/2018
 - 8/11/2018



Source: Esri, USGS, NOAA, NASA, CGRS, NAD 83, NAD 2011, NCEAS, NLS, OS, NMA, Geotitles, etc. © 2018