

IAP Map

Angel Springs Fire
WA-NES-001801
August 10, 2018
Day Shift

Approx. 5,046 acres
8/9/2018, 1900 hrs

Div A



Miles

0 0.25 0.5

Legend

- Drop Point
- Hot Spot
- 🔥 Fire Location
- Ⓜ Water Source
- ⊗ Fire Origin
- Other
- Ⓜ Helibase
- ⌘ Division Break

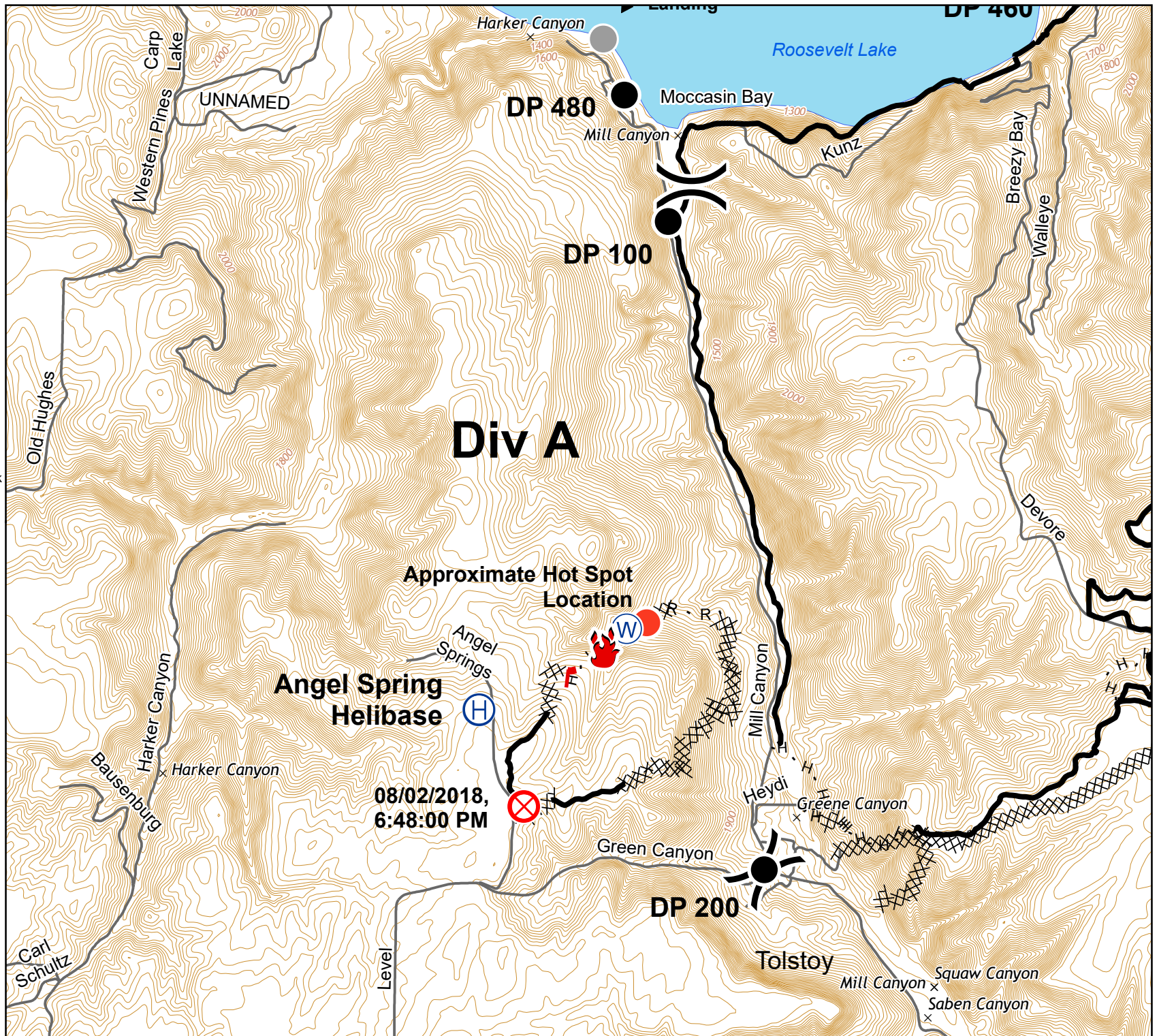
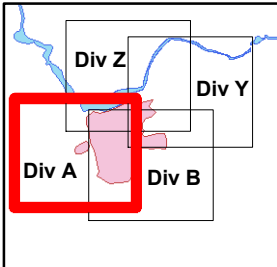
┌ Uncontrolled Fire Edge

— Completed Line

⊗ Completed Dozer Line

H - H Completed Hand Line

R - R Road as Completed Line



IAP Map

Angel Springs Fire
WA-NES-001801
August 10, 2018
Day Shift

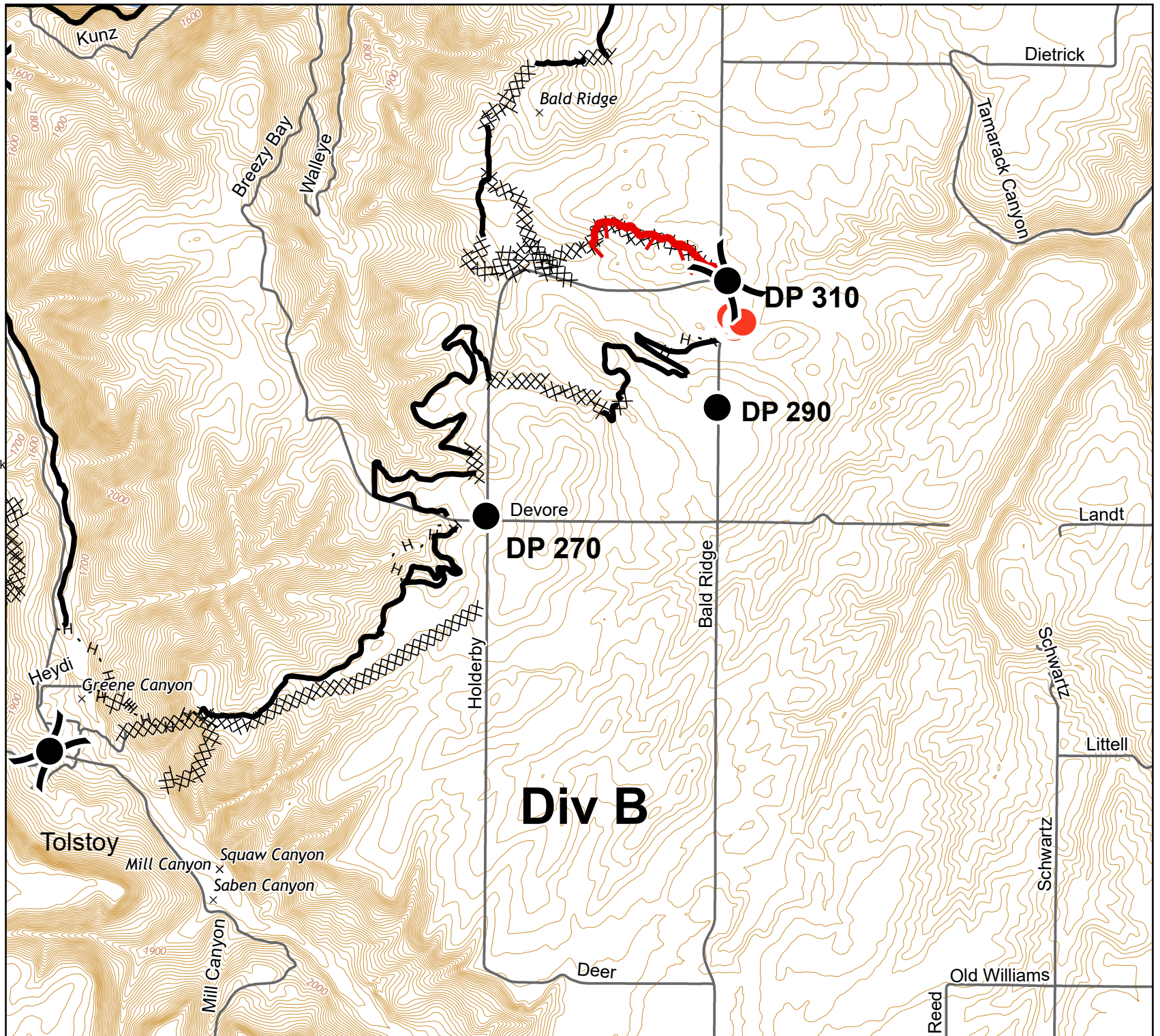
Approx. 5,046 acres
8/9/2018, 1900 hrs

Div B



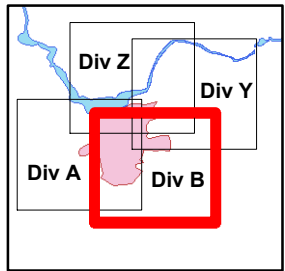
Miles

0 0.25 0.5



- Legend**
- Drop Point
 - Other
 - Hot Spot
 - ⊗ Division Break
 - ⊗ Water Source

- ┌ Uncontrolled Fire Edge
- Completed Line
- ⊗ Completed Dozer Line
- H - H Completed Hand Line
- R - R Road as Completed Line



IAP Map

Angel Springs Fire
WA-NES-001801
August 10, 2018
Day Shift

Approx. 5,046 acres
8/9/2018, 1900 hrs

Div Y

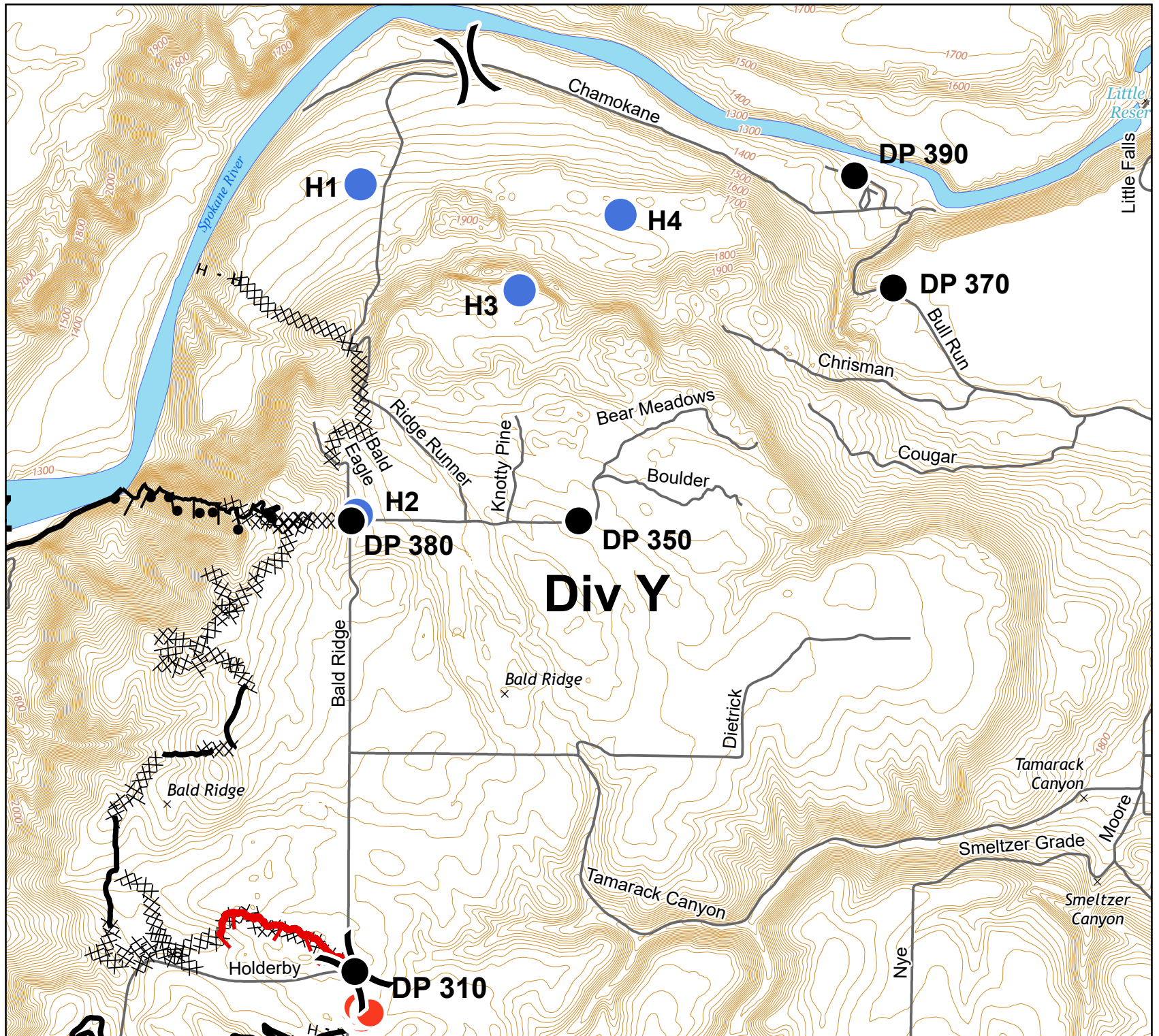
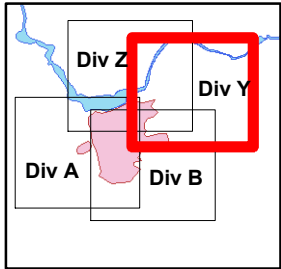


Miles

0 0.25 0.5

Legend

- Drop Point
- Hot Spot
- Helispot
- ⎓ Division Break
- ┌ Uncontrolled Fire Edge
- Completed Line
- XXXXX Completed Dozer Line
- H - H Completed Hand Line
- R - R Road as Completed Line
- Completed Burnout



IAP Map

Angel Springs Fire
WA-NES-001801
August 10, 2018
Day Shift

Approx. 5,046 acres
8/9/2018, 1900 hrs

Div Z



Miles

0 0.25 0.5

Legend

- Drop Point
- Helispot
- Other

- Completed Line
- XXXXX Completed Dozer Line
- H - H Completed Hand Line
- Completed Burnout

