

# Angel Springs Fire WA-NES-001801

## Briefing Map

### August 10, 2018

5,046 Acres as of 8/9 1600 Hrs

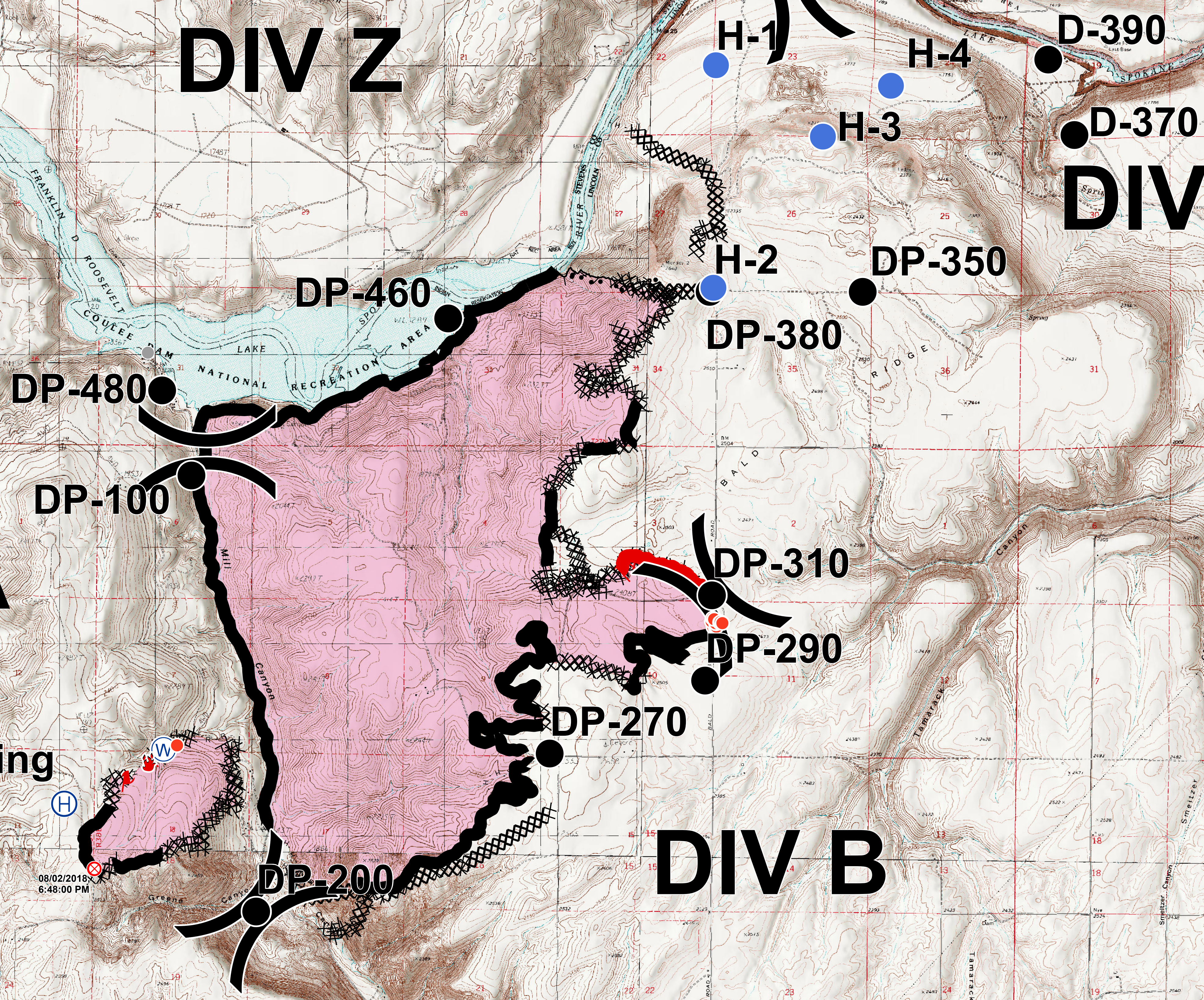
# DIV Z

# DIV Y

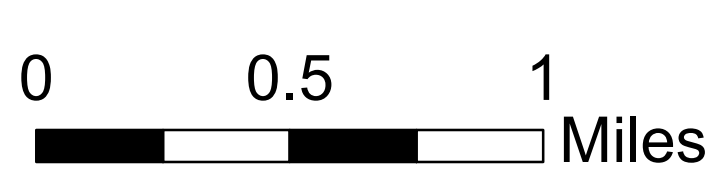
# DIV A

# DIV B

### Angel Spring Helibase



- Legend**
- Drop Point
  - 🔥 Fire Location
  - ⊙ Fire Origin
  - ⊙ Helibase
  - Helispot
  - 🚒 Incident Command Post
  - Ⓜ Repeater
  - 🌊 Water Source
  - Other
  - ⌘ Division Break
  - 🔴 Uncontrolled Fire Edge
  - Completed Line
  - ⊘ Completed Dozer Line
  - Completed Hand Line
  - R-R-R Road as Completed Line
  - ⊠ Completed Burnout
  - 👤 Fire Perimeter



Datum: NAD 83 GISS: JRP