

IAP Map

Angel Springs Fire
WA-NES-001801
August 13, 2018
Day Shift

Approx. 5,046 acres
8/9/2018, 1900 hrs

Div A



Miles

0 0.25 0.5

Legend

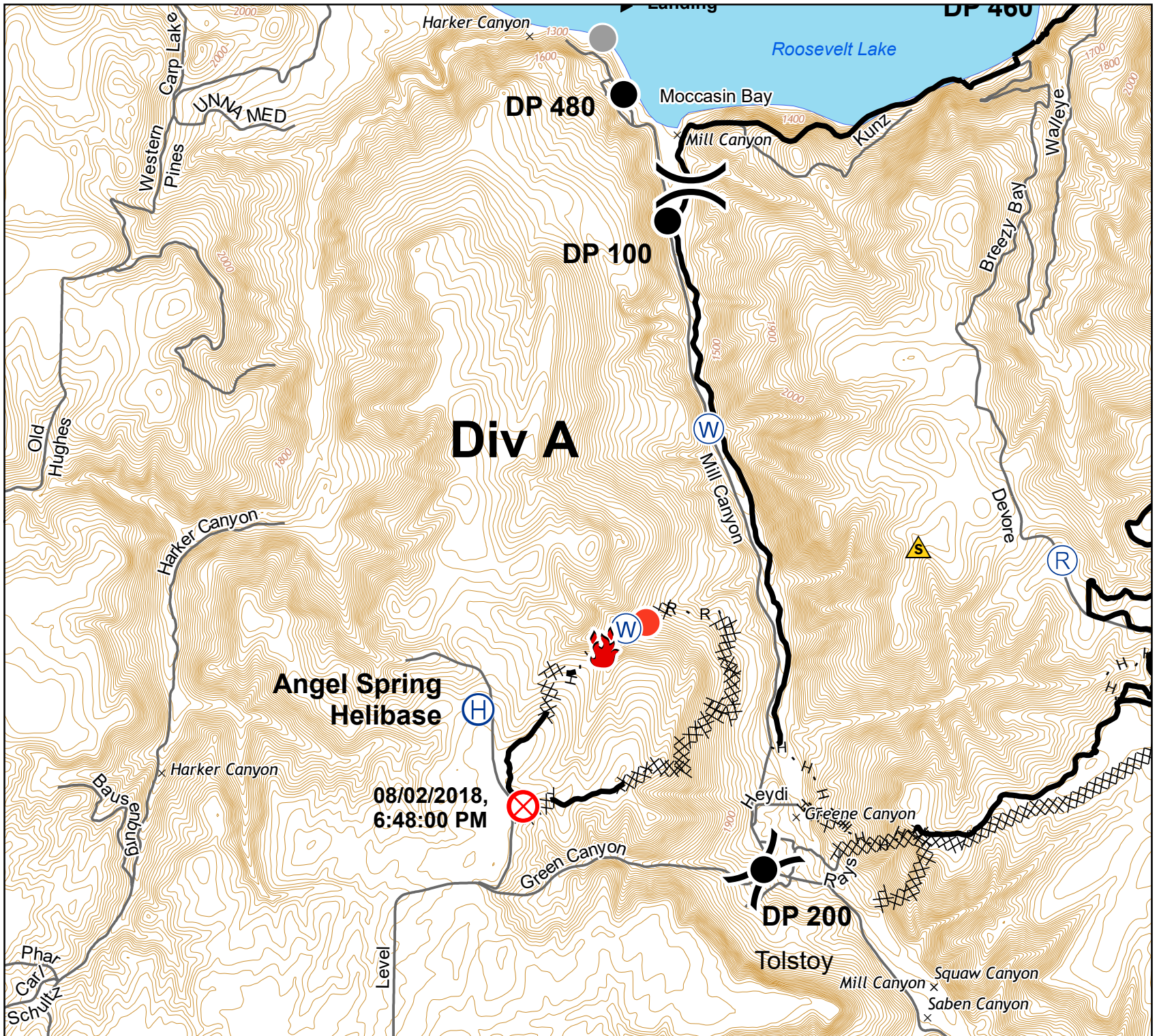
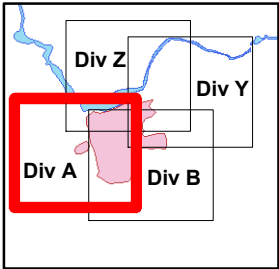
- Drop Point
- Ⓡ Repeater
- 🔥 Fire Location
- ⚠ Safety Zone
- ⊗ Fire Origin
- Ⓜ Water Source
- Ⓜ Helibase
- Other
- Hot Spot
-) Division Break

— Completed Line

XXXXX Completed Dozer Line

H - H Completed Hand Line

R - R Road as Completed Line



IAP Map

Angel Springs Fire
WA-NES-001801
August 13, 2018
Day Shift

Approx. 5,046 acres
8/9/2018, 1900 hrs

Div B



Miles

0 0.25 0.5

Legend

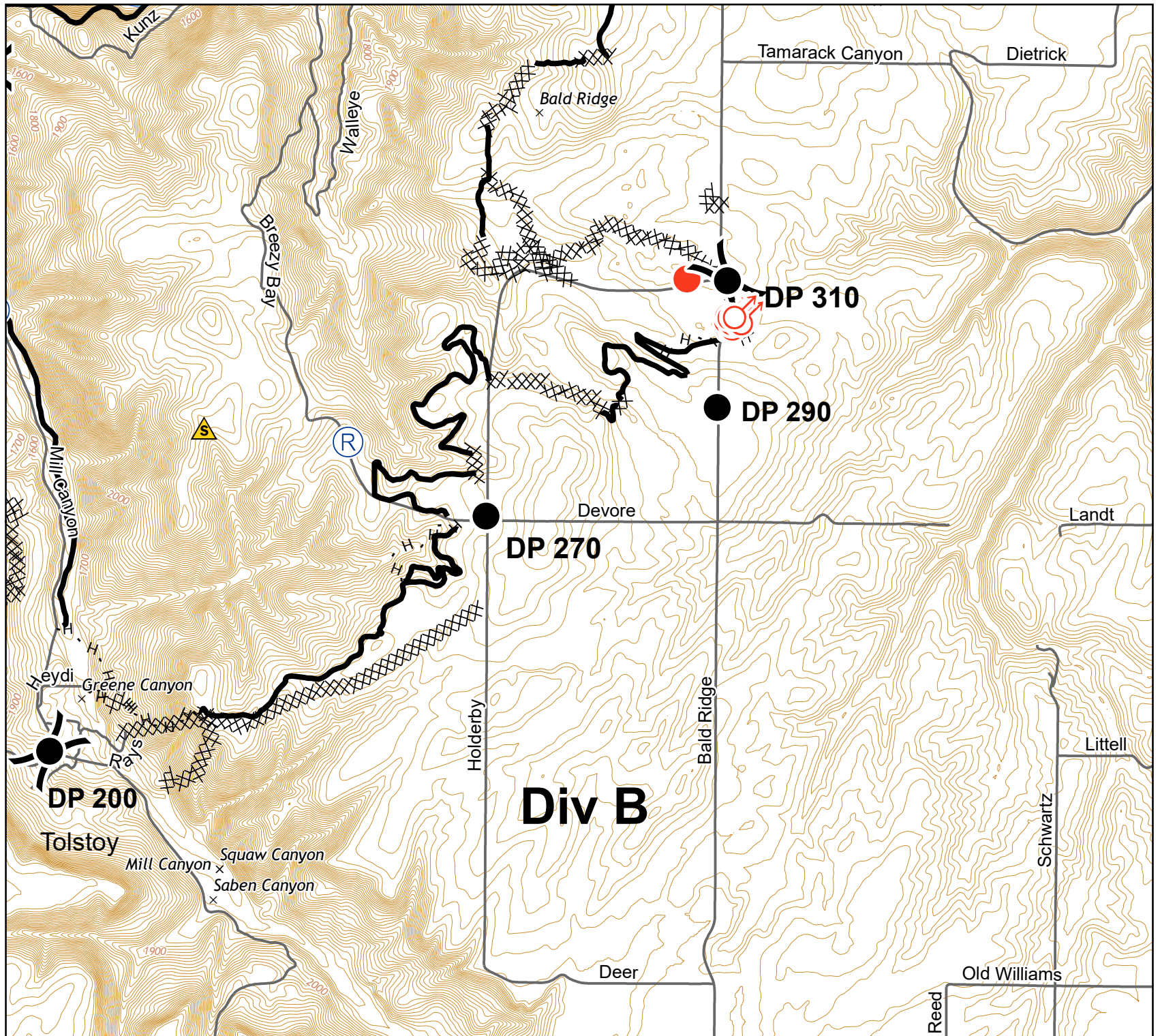
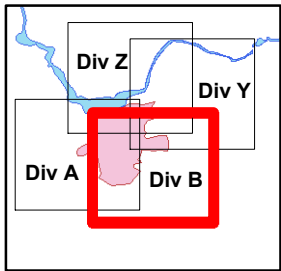
- Drop Point
- Hot Spot
- Ⓡ Repeater
- ⚠ Safety Zone
- ♂ Spot Fire
- Ⓜ Water Source
- ⎓ Division Break

— Completed Line

XXXXX Completed Dozer Line

H - H Completed Hand Line

R - R Road as Completed Line



IAP Map

Angel Springs Fire
WA-NES-001801
August 13, 2018
Day Shift

Approx. 5,046 acres
8/9/2018, 1900 hrs

Div Y



Miles

0 0.25 0.5

Legend

- Drop Point
- ♂ Spot Fire
- Helispot
- Hot Spot
- ⎓ Division Break

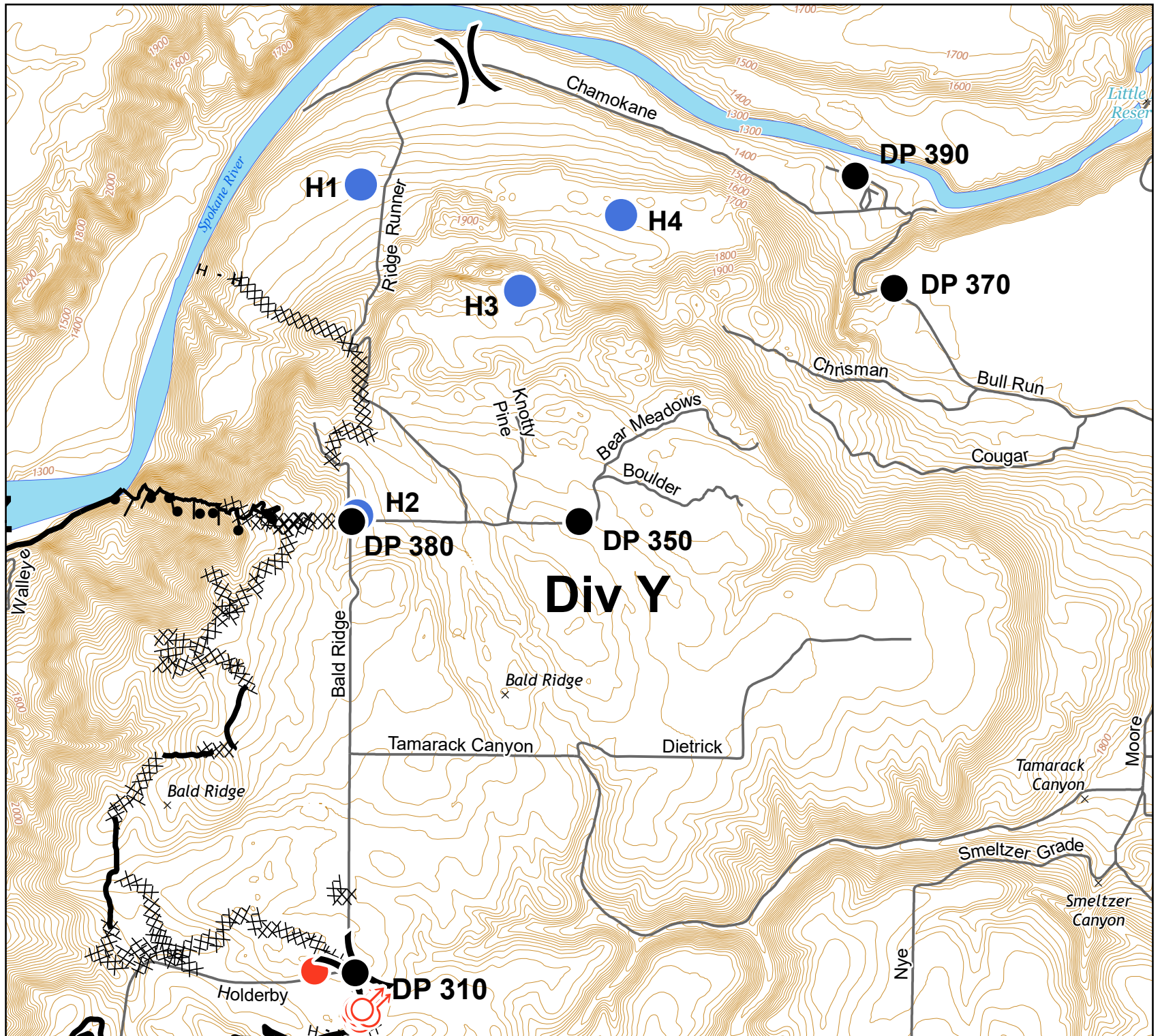
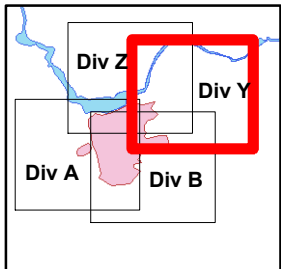
— Completed Line

XXXXX Completed Dozer Line

H - H Completed Hand Line

R - R Road as Completed Line

● Completed Burnout



IAP Map

Angel Springs Fire
WA-NES-001801
August 13, 2018
Day Shift

Approx. 5,046 acres
8/9/2018, 1900 hrs

Div Z



Miles

0 0.25 0.5

Legend

- Drop Point
- Other
- Helispot
- ⌘ Division Break
- ⬆ Spot Fire

- Completed Line
- XXXXX Completed Dozer Line
- H - H Completed Hand Line
- Completed Burnout

