



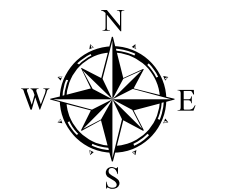
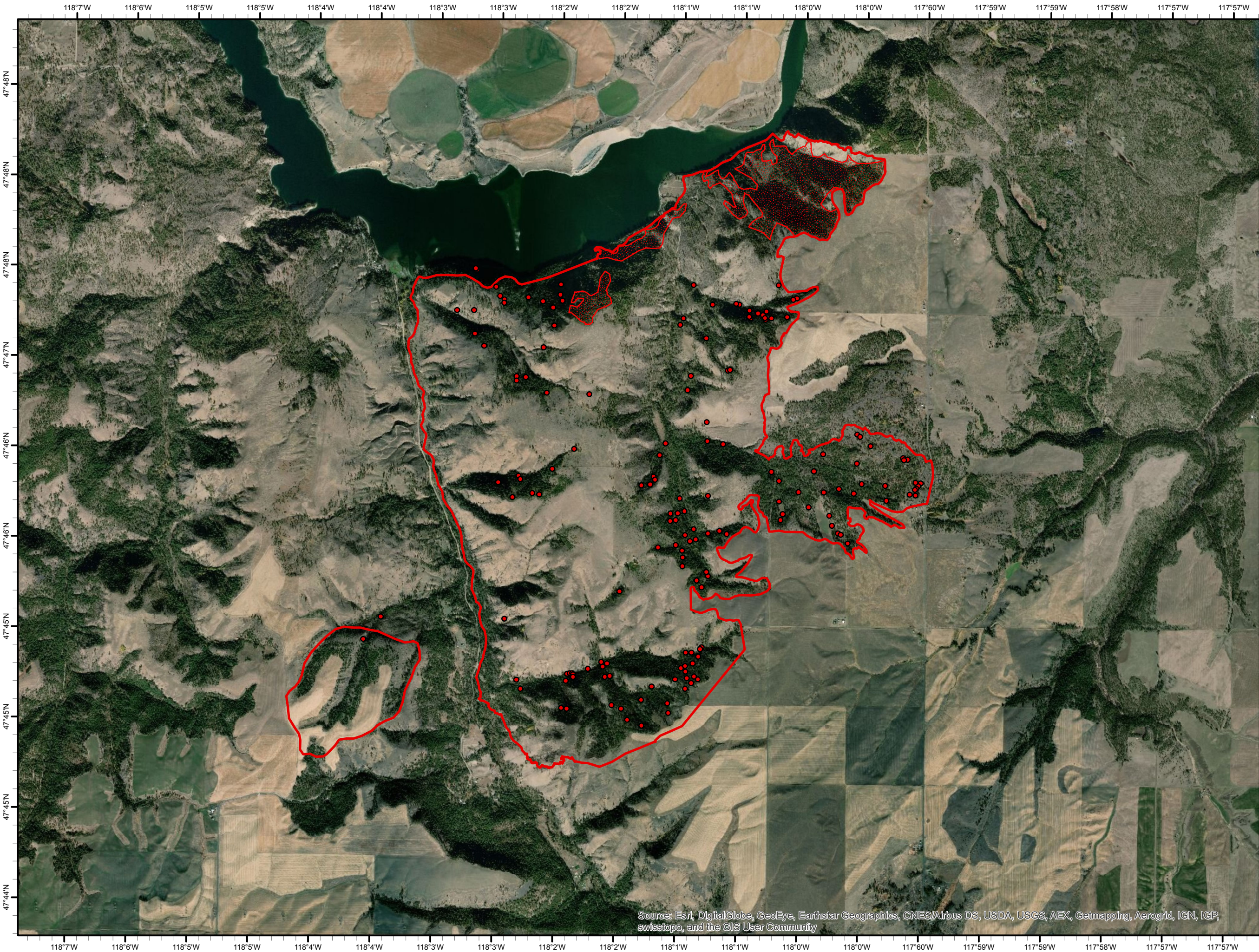


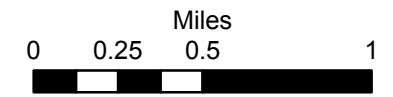
# Angel Spring WA-NES-001801 Infrared Heat Sources

1:36,000

-  Heat Perimeter
  -  Intense Heat Areas
  -  Scattered Heat Areas
  -  Isolated Heat Sources
- NAD 1983 UTM Zone 11N



IR Interpreter: Brian Monroe  
IR interpreted acres: 4,918  
Date: 08/08/2018  
Scan Date/Time: 08/07/18 2350 hrs



Source: Esri, DigitalGlobe, GeoEye, Earthstar Geographics, CNES/Airbus DS, USDA, USGS, AEX, Getmapping, Aerogrid, IGN, IGP, swisstopo, and the GIS User Community