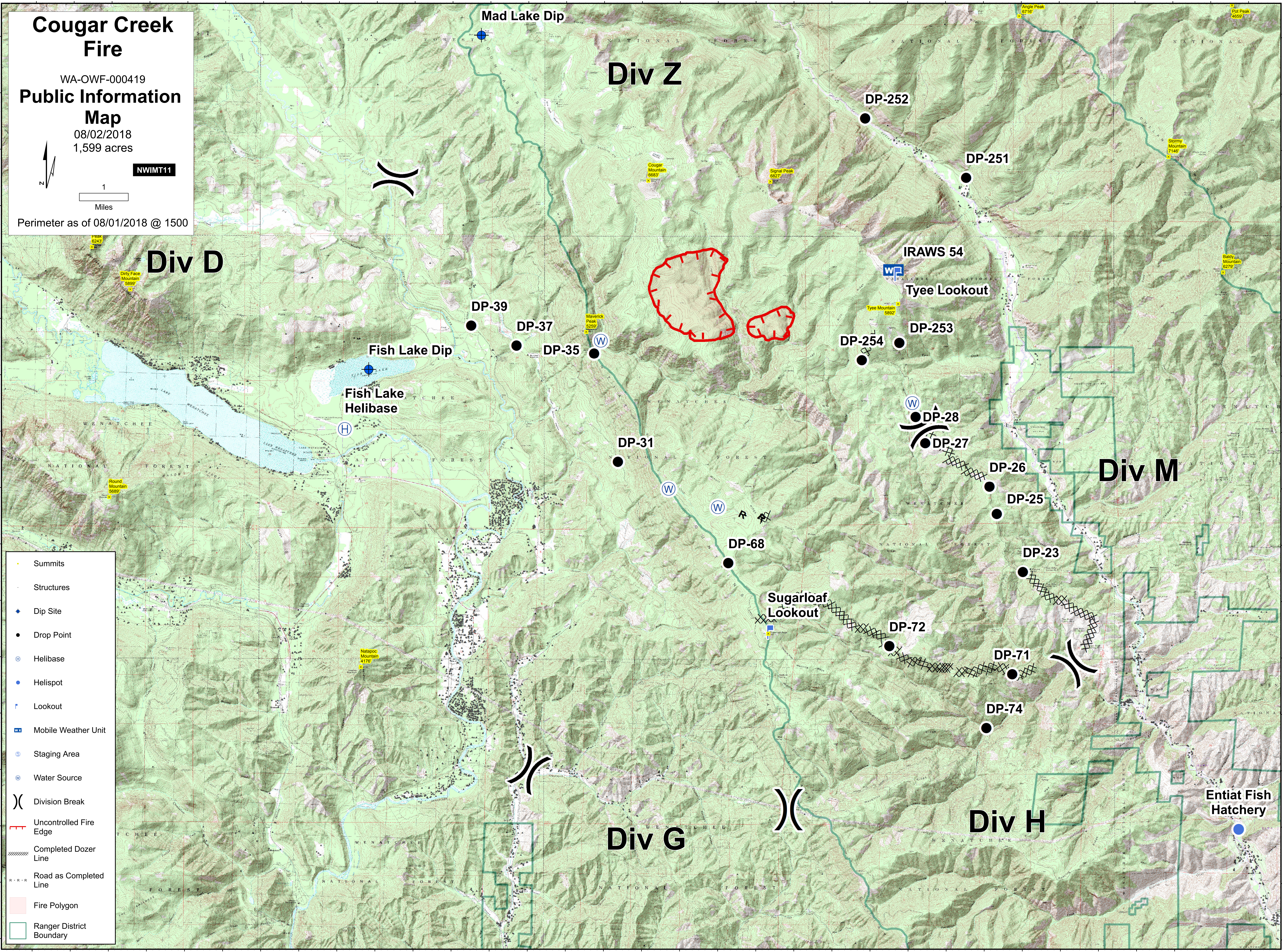


120°51'W 120°50'W 120°49'W 120°48'W 120°47'W 120°46'W 120°45'W 120°44'W 120°43'W 120°42'W 120°41'W 120°40'W 120°39'W 120°38'W 120°37'W 120°36'W 120°35'W 120°34'W 120°33'W 120°32'W 120°31'W 120°30'W 120°29'W 120°28'W 120°27'W 120°26'W 120°25'W 120°24'W 120°23'W 120°22'W 120°21'W 120°20'W 120°19'W

Cougar Creek Fire
 WA-OWF-000419
Public Information Map
 08/02/2018
 1,599 acres
 NWIMT11
 1 Miles
 Perimeter as of 08/01/2018 @ 1500

47°56'N 47°55'N 47°54'N 47°53'N 47°52'N 47°51'N 47°50'N 47°49'N 47°48'N 47°47'N 47°46'N 47°45'N 47°44'N 47°43'N 47°42'N 47°41'N 47°40'N

47°56'N 47°55'N 47°54'N 47°53'N 47°52'N 47°51'N 47°50'N 47°49'N 47°48'N 47°47'N 47°46'N 47°45'N 47°44'N 47°43'N 47°42'N 47°41'N 47°40'N



- Summits
- Structures
- ◆ Dip Site
- Drop Point
- ⊕ Helibase
- Helispot
- ⚡ Lookout
- ☒ Mobile Weather Unit
- ⊕ Staging Area
- ⊕ Water Source
-) Division Break
- Uncontrolled Fire Edge
- ⊘ Completed Dozer Line
- ⊘ Road as Completed Line
- Fire Polygon
- Ranger District Boundary

120°51'W 120°50'W 120°49'W 120°48'W 120°47'W 120°46'W 120°45'W 120°44'W 120°43'W 120°42'W 120°41'W 120°40'W 120°39'W 120°38'W 120°37'W 120°36'W 120°35'W 120°34'W 120°33'W 120°32'W 120°31'W 120°30'W 120°29'W 120°28'W 120°27'W 120°26'W 120°25'W 120°24'W 120°23'W 120°22'W 120°21'W 120°20'W 120°19'W