

120°13'W

120°12'W

120°11'W

120°10'W

47°49'N

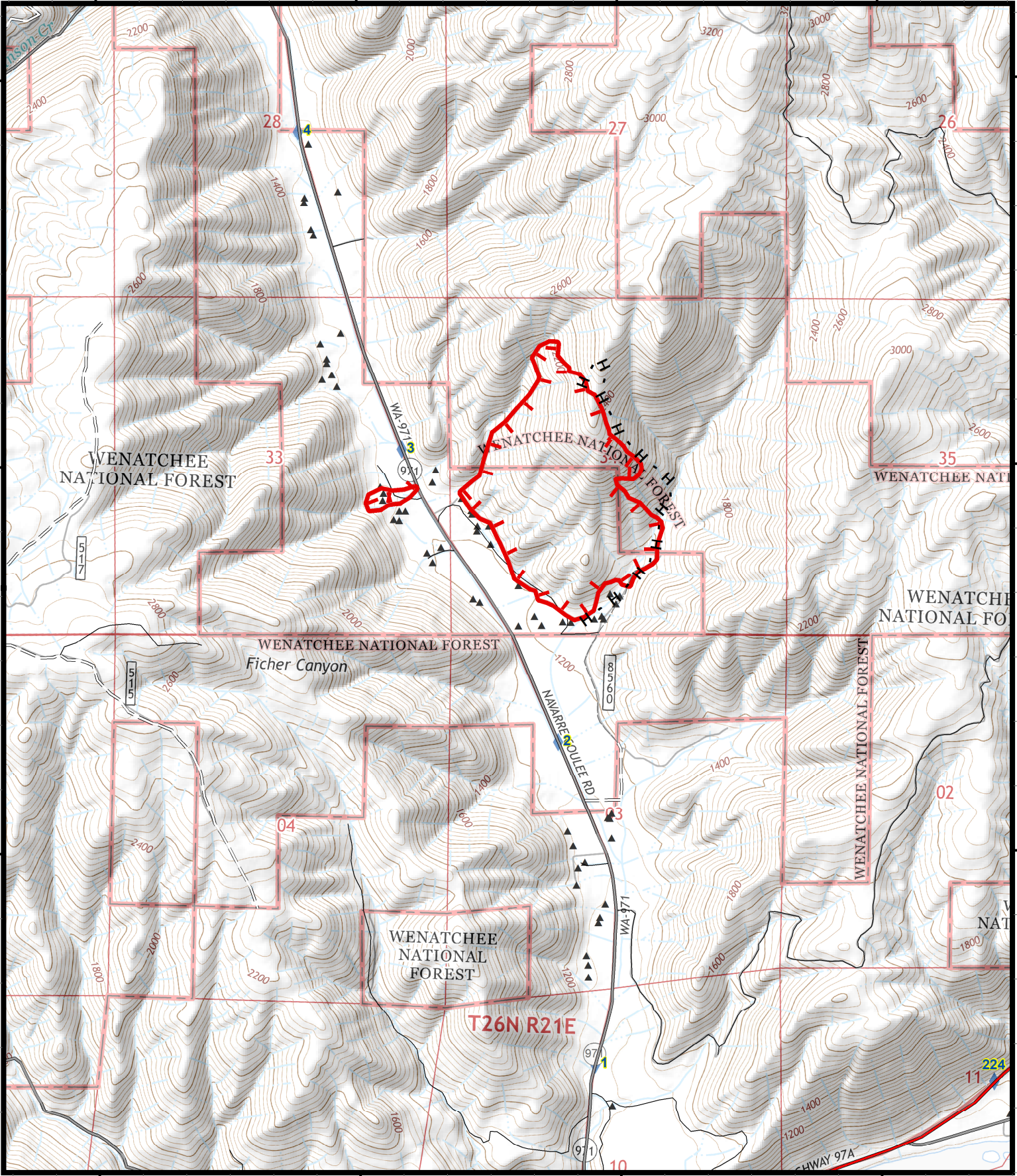
47°49'N

47°48'N

47°48'N

47°47'N

47°47'N



**Navarre Fire**  
 WA-SES-000455  
**IAP Map**  
 08/02/2018  
 Day Shift  
**164 acres (total)**  
 Perimeter as of 08/01/2018 @ 0800

- ▲ Structures
- ▬ Uncontrolled Fire Edge
- H - Completed Hand Line
- ◆ Milepost Markers (DOT)

Magnetic Declination: +15.19° E



NWIMT11

