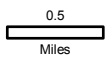


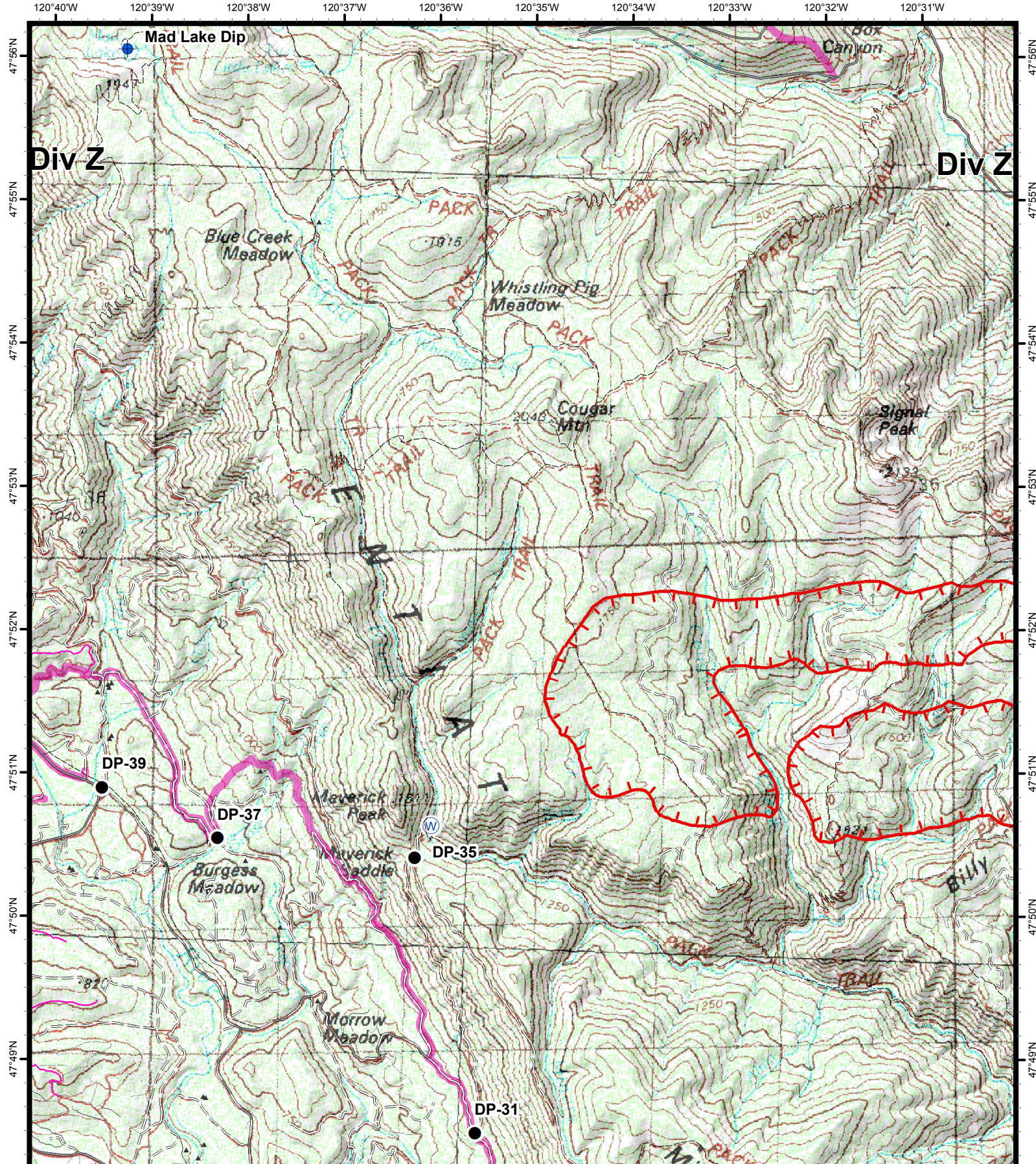
**Cougar Creek Fire**  
 WA-OWF-000419  
**IAP Map**  
 08/03/2018  
 Day Shift  
 3,614 acres (total)  
 Perimeter as of 08/02/2018 @ 1830

- ▲ Structures
- Dip Site
- Drop Point
- Ⓜ Helibase
- ▲ Milepost Markers (DOT)
- ⌋ Division Break
- Wolverine Contingency Lines

Magnetic Declination: +15.19° E  
 Page 1 of 7

NWIMT11

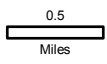


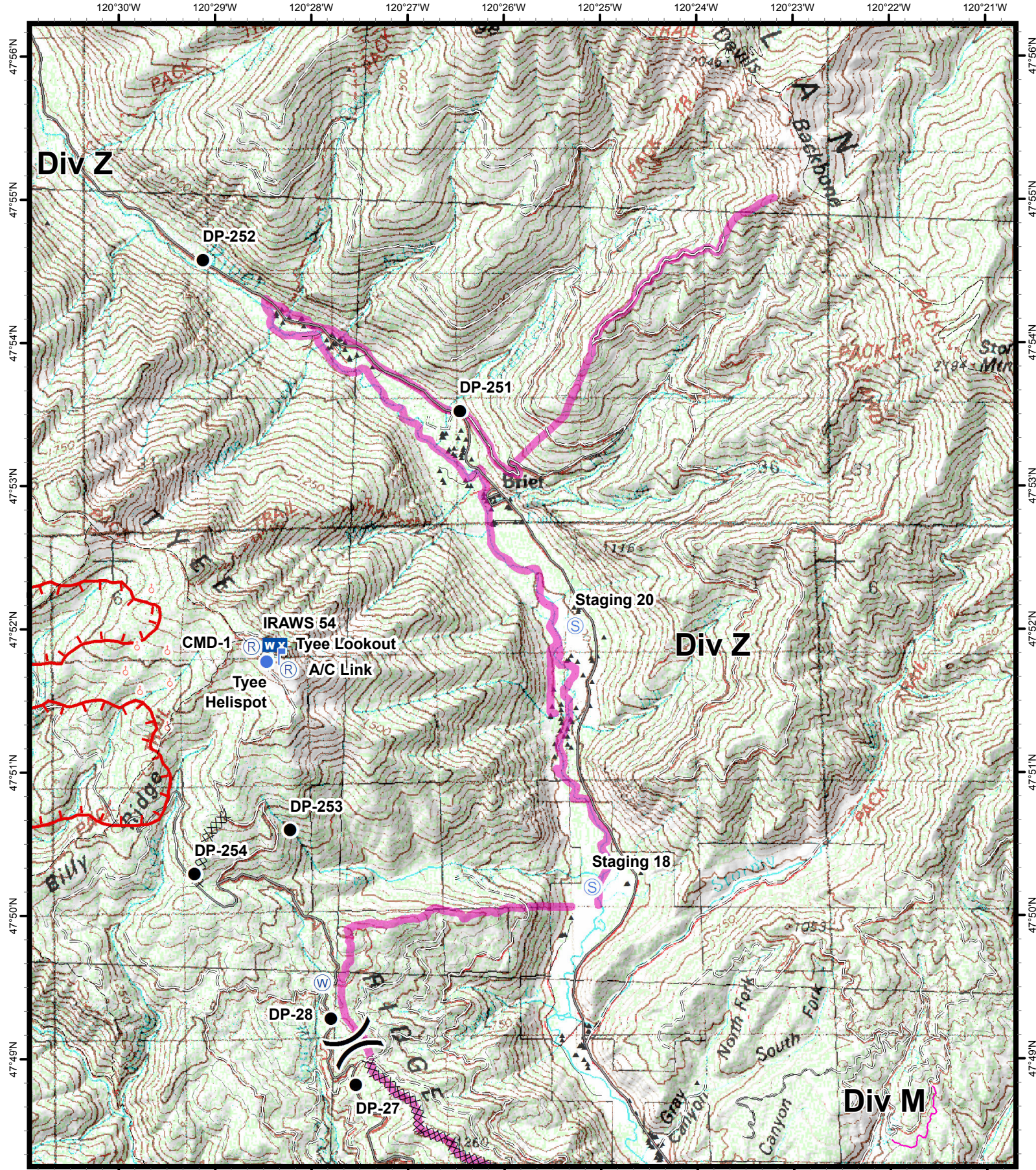


**Cougar Creek Fire**  
 WA-OWF-000419  
**IAP Map**  
 08/03/2018  
 Day Shift  
 3,614 acres (total)  
 Perimeter as of 08/02/2018 @ 1830

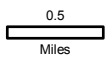
- ▲ Structures
- Dip Site
- Drop Point
- Ⓜ Water Source
- ┌ Uncontrolled Fire Edge
- Wolverine Contingency Lines

Magnetic Declination: +15.19° E  
 Page 2 of 7





**Cougar Creek Fire**  
 WA-OWF-000419  
**IAP Map**  
 08/03/2018  
 Day Shift  
**3,614 acres (total)**  
 Perimeter as of 08/02/2018 @ 1830



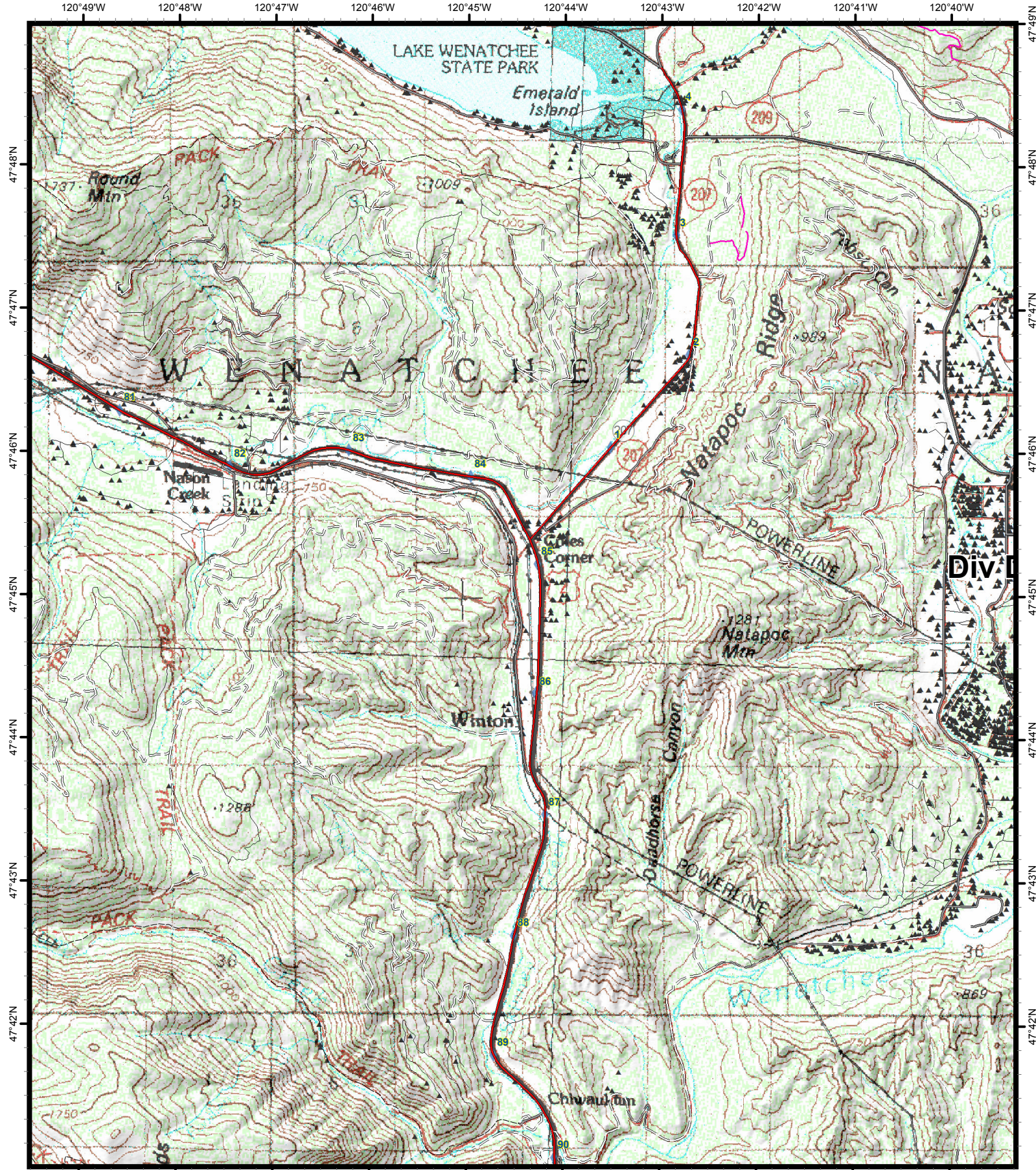
- ▲ Structures
- Drop Point
- Helispot
- Lookout
- WX** Mobile Weather Unit

- Ⓡ Repeater
- ⊕ Spot Fire
- Ⓢ Staging Area
- Ⓦ Water Source

- ⎓ Division Break
- ⊘ Completed Dozer Line
- ⊞ Wolverine Contingency Lines
- ⎓ Uncontrolled Fire Edge

Magnetic Declination: +15.19° E  
 Page 3 of 7

NWIMT11



**Cougar Creek Fire**  
 WA-OWF-000419  
**IAP Map**  
 08/03/2018  
 Day Shift  
**3,614 acres (total)**  
 Perimeter as of 08/02/2018 @ 1830

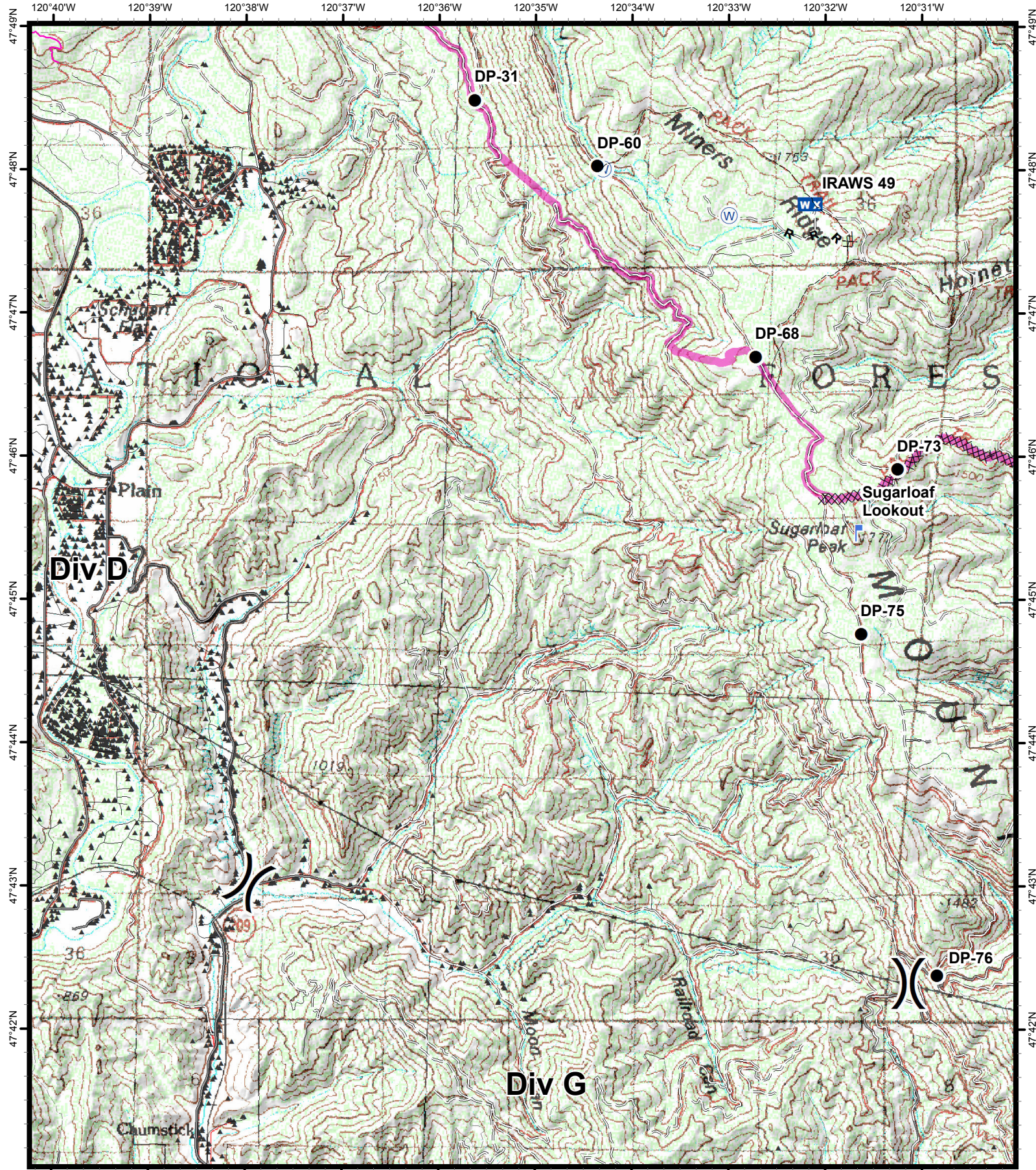


- ▲ Structures
- Ⓜ Helibase
- Transmission Line
- ◆ Milepost Markers (DOT)

Magnetic Declination: +15.19° E  
 Page 4 of 7

NWIMT11

N



**Cougar Creek Fire**  
 WA-OWF-000419  
**IAP Map**  
 08/03/2018  
 Day Shift  
**3,614 acres (total)**  
 Perimeter as of 08/02/2018 @ 1830

- ▲ Structures
- Drop Point
- Lookout
- WX** Mobile Weather Unit

**W** Water Source

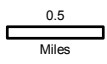
**)** Division Break

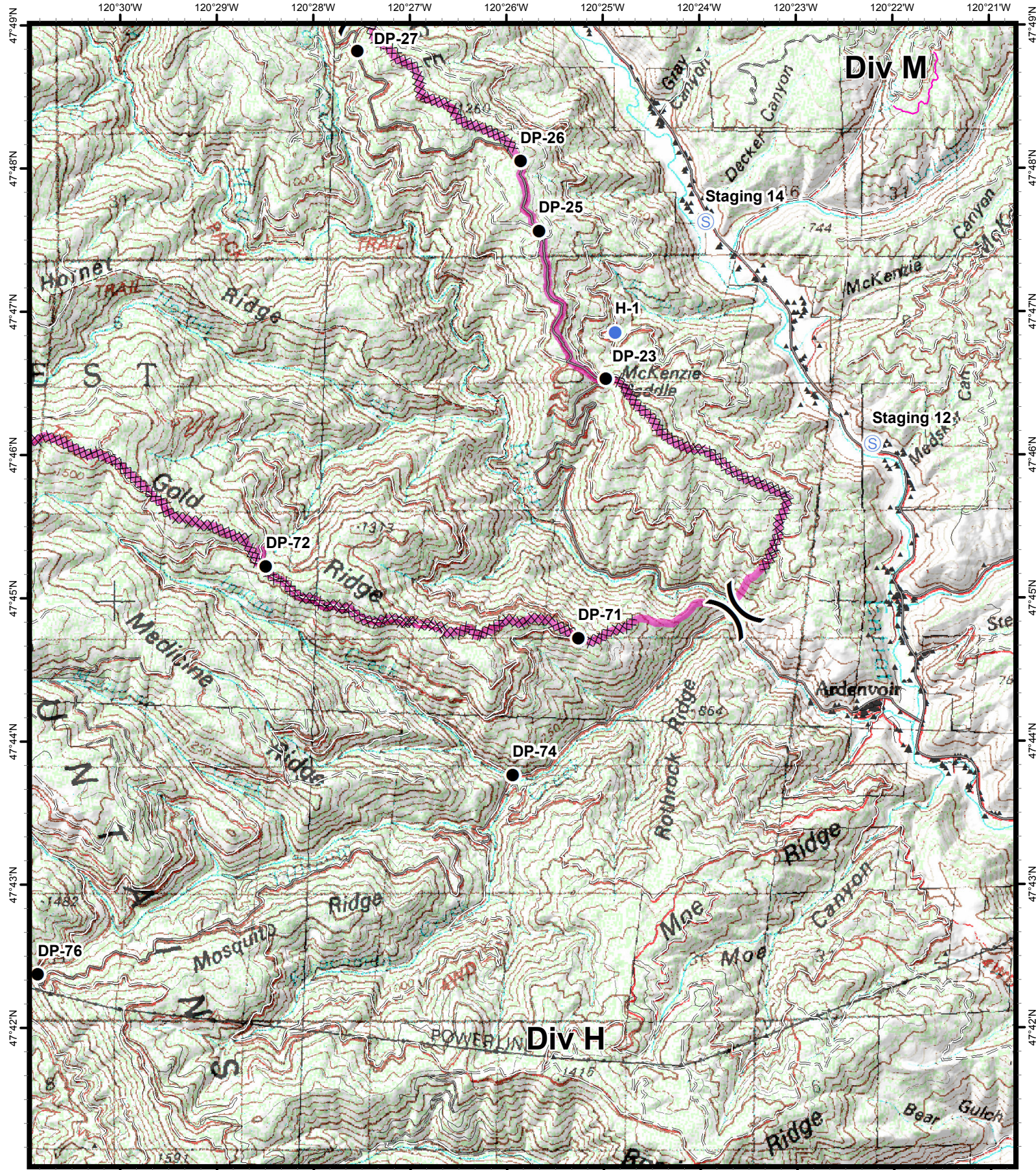
**XXXX** Completed Dozer Line

- R** - Road as Completed Line
- Transmission Line
- Wolverine Contingency Lines

Magnetic Declination: +15.19° E  
 Page 5 of 7

**NWIMT11**





**Cougar Creek Fire**  
 WA-OWF-000419  
**IAP Map**  
 08/03/2018  
 Day Shift  
 3,614 acres (total)  
 Perimeter as of 08/02/2018 @ 1830

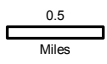
- ▲ Structures
- Drop Point
- Helispot
- Ⓢ Staging Area

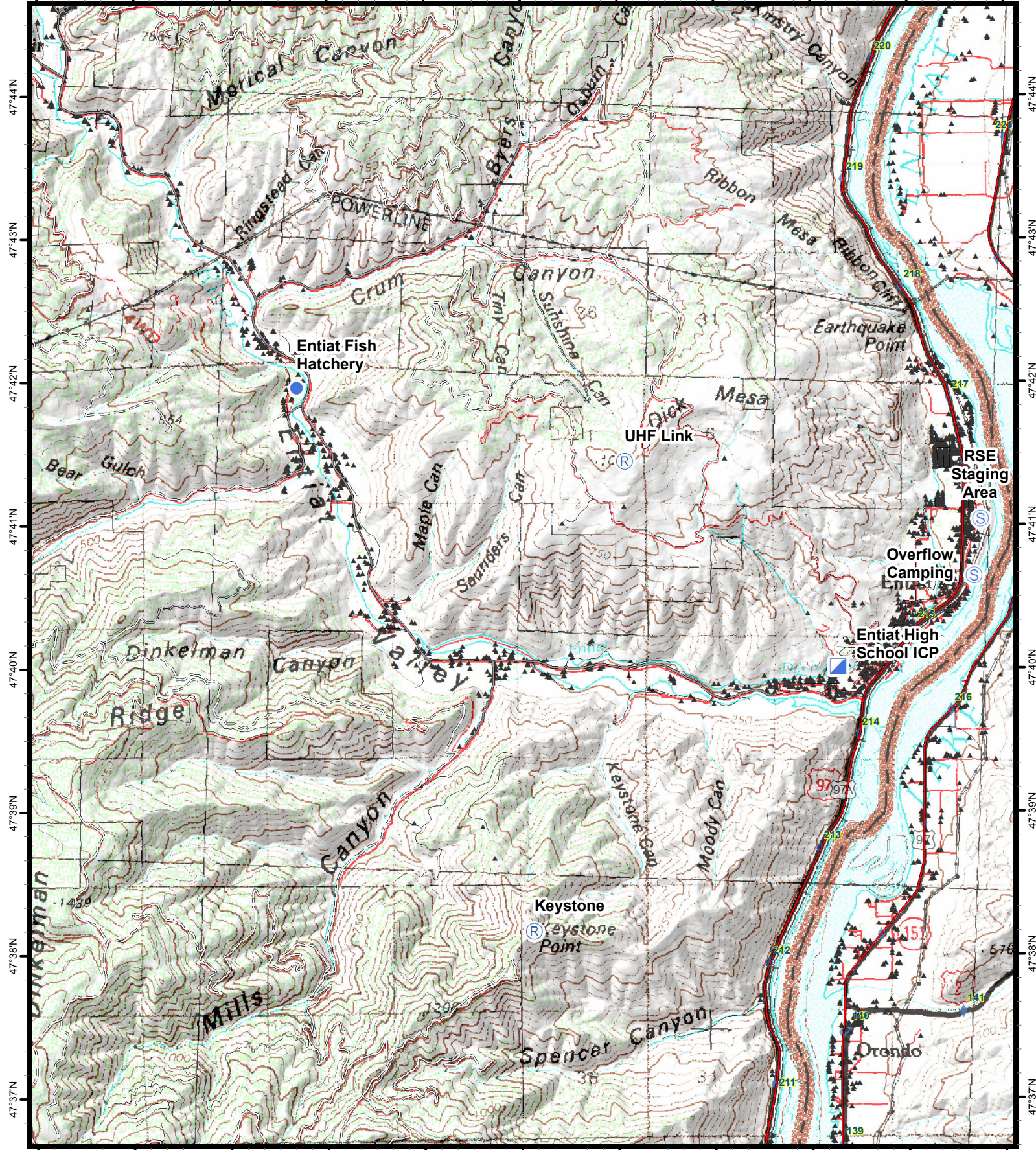
- )) Division Break
- XXXXX Completed Dozer Line

- Transmission Line
- Wolverine Contingency Lines

Magnetic Declination: +15.19° E  
 Page 6 of 7

NWIMT11





**Cougar Creek Fire**  
WA-OWF-000419  
**IAP Map**  
08/03/2018  
Day Shift  
3,614 acres (total)  
Perimeter as of 08/02/2018 @ 1830

- ▲ Structures
- Helispot
- Incident Command Post
- Ⓜ Repeater
- Ⓢ Staging Area
- Transmission Line
- ◆ Milepost Markers (DOT)

Magnetic Declination: +15.19° E  
Page 7 of 7

NWIMT11

