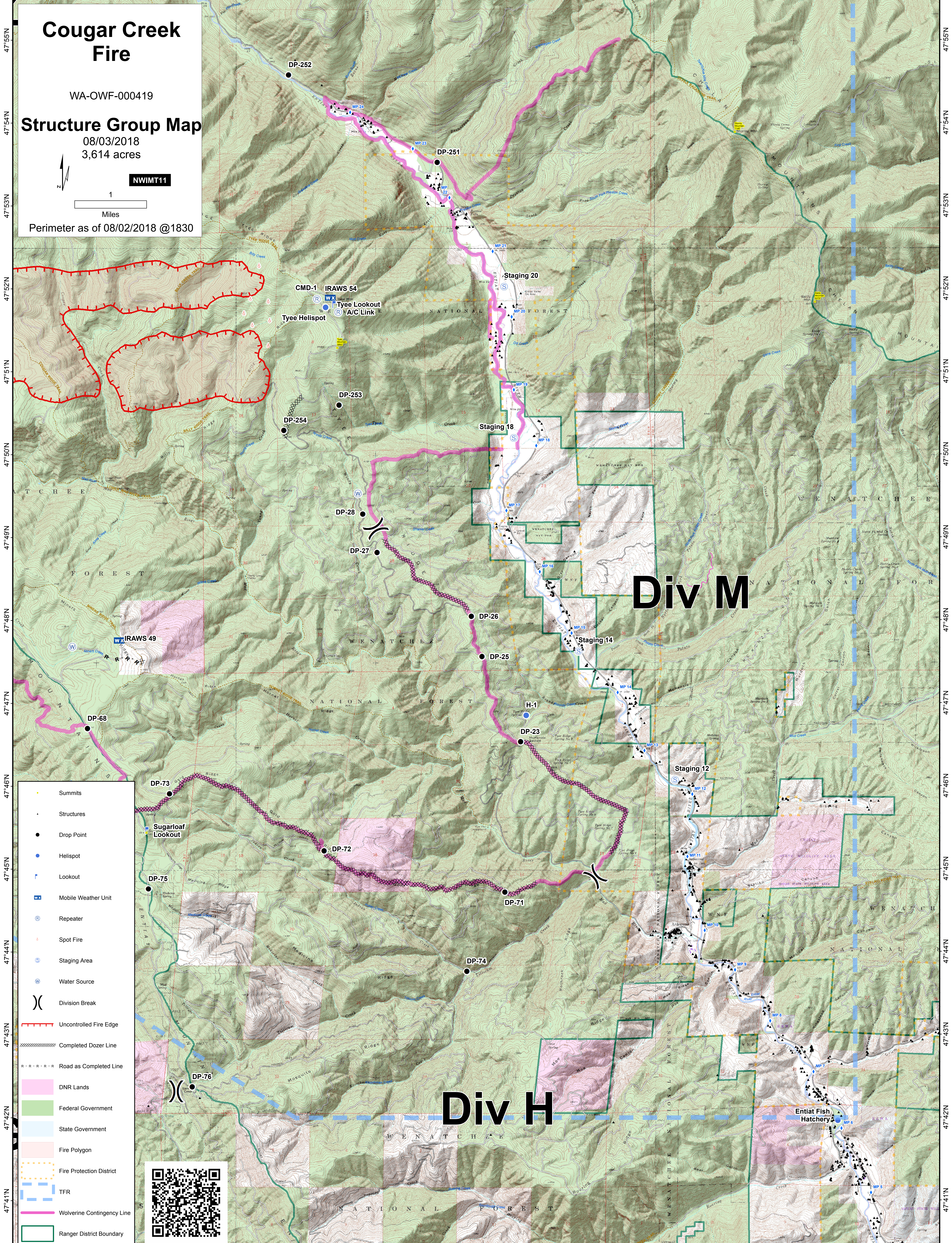


120°34'W 120°33'W 120°32'W 120°31'W 120°30'W 120°29'W 120°28'W 120°27'W 120°26'W 120°25'W 120°24'W 120°23'W 120°22'W 120°21'W 120°20'W 120°19'W 120°18'W



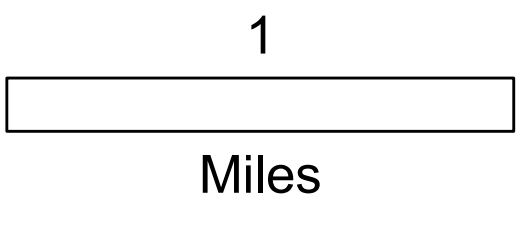
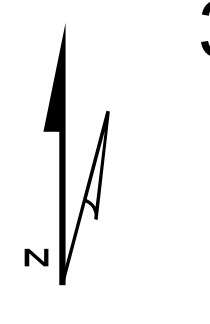
Cougar Creek Fire

WA-OWF-000419

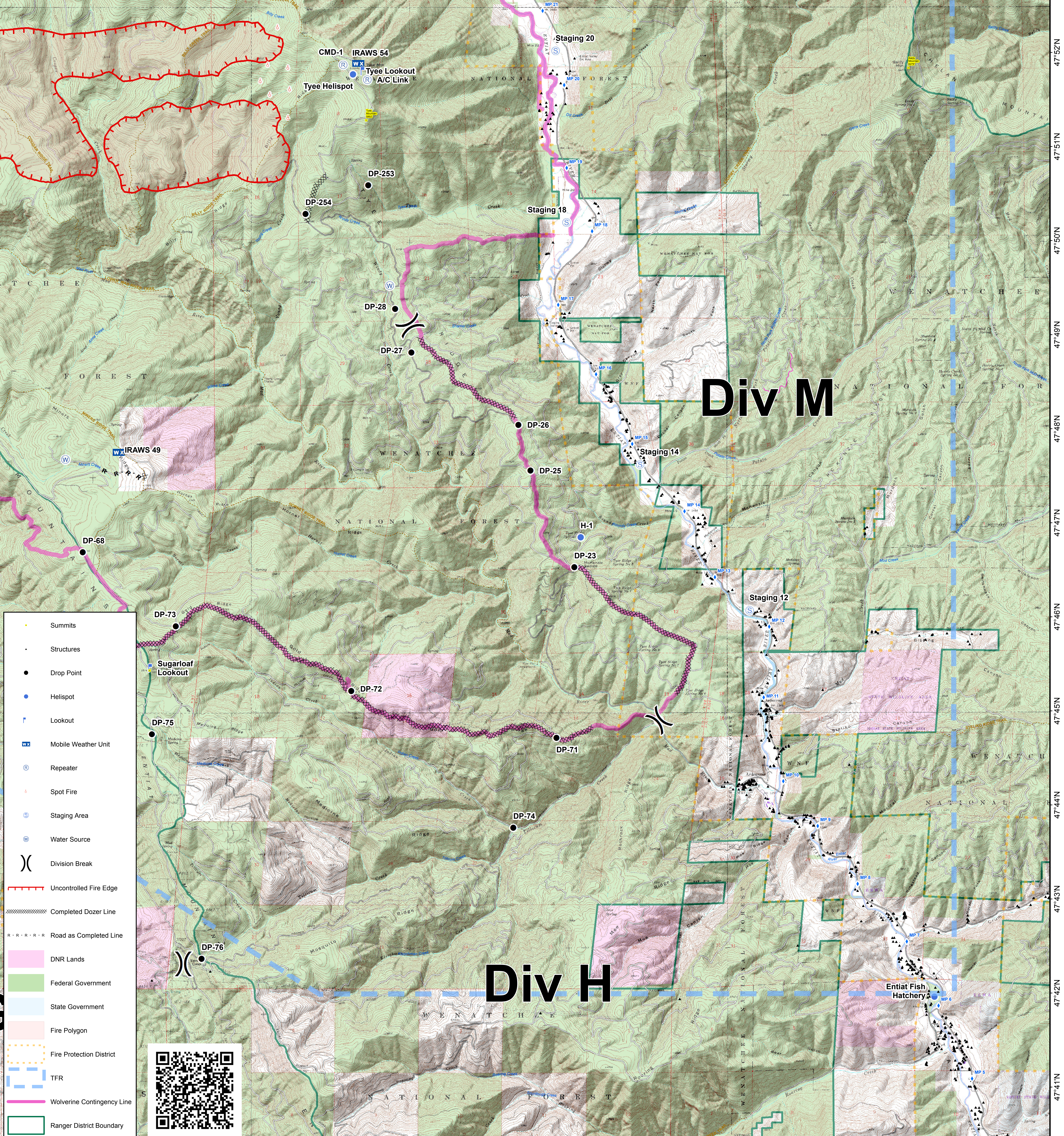
Structure Group Map

08/03/2018
3,614 acres

NWIMT11



Perimeter as of 08/02/2018 @1830



Div M

Div H

- Summits
- Structures
- Drop Point
- Helispot
- Lookout
- Mobile Weather Unit
- Repeater
- Spot Fire
- Staging Area
- Water Source
- Division Break
- Uncontrolled Fire Edge
- Completed Dozer Line
- Road as Completed Line
- DNR Lands
- Federal Government
- State Government
- Fire Polygon
- Fire Protection District
- TFR
- Wolverine Contingency Line
- Ranger District Boundary



120°34'W 120°33'W 120°32'W 120°31'W 120°30'W 120°29'W 120°28'W 120°27'W 120°26'W 120°25'W 120°24'W 120°23'W 120°22'W 120°21'W 120°20'W 120°19'W 120°18'W

47°55'N 47°54'N 47°53'N 47°52'N 47°51'N 47°50'N 47°49'N 47°48'N 47°47'N 47°46'N 47°45'N 47°44'N 47°43'N 47°42'N 47°41'N

47°55'N 47°54'N 47°53'N 47°52'N 47°51'N 47°50'N 47°49'N 47°48'N 47°47'N 47°46'N 47°45'N 47°44'N 47°43'N 47°42'N 47°41'N