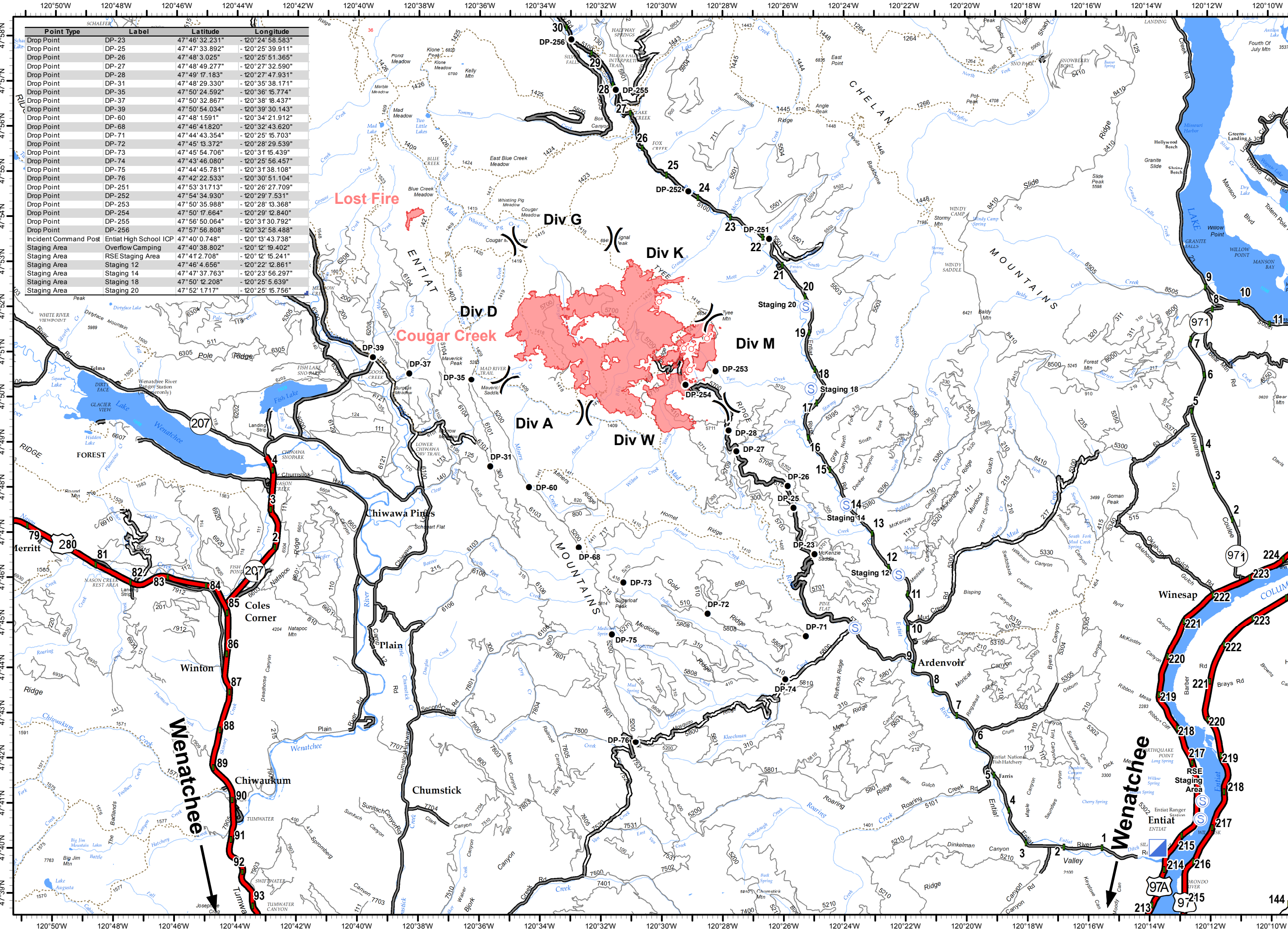


Cougar Creek Fire

WA-OWF-000419
Transportation
 08/08/2018

| Point Type | Label | Latitude | Longitude |
|-----------------------|------------------------|---------------|-----------------|
| Drop Point | DP-23 | 47°46'32.231" | -120°24'58.583" |
| Drop Point | DP-25 | 47°47'33.892" | -120°25'39.911" |
| Drop Point | DP-26 | 47°48'3.025" | -120°25'51.365" |
| Drop Point | DP-27 | 47°48'49.277" | -120°27'32.590" |
| Drop Point | DP-28 | 47°49'17.183" | -120°27'47.931" |
| Drop Point | DP-31 | 47°48'29.330" | -120°35'38.171" |
| Drop Point | DP-35 | 47°50'24.592" | -120°36'15.774" |
| Drop Point | DP-37 | 47°50'32.867" | -120°38'18.437" |
| Drop Point | DP-39 | 47°50'54.034" | -120°39'30.143" |
| Drop Point | DP-60 | 47°48'1.591" | -120°34'21.912" |
| Drop Point | DP-68 | 47°46'41.820" | -120°32'43.620" |
| Drop Point | DP-71 | 47°44'43.354" | -120°25'15.703" |
| Drop Point | DP-72 | 47°45'13.372" | -120°28'29.539" |
| Drop Point | DP-73 | 47°45'54.706" | -120°31'15.439" |
| Drop Point | DP-74 | 47°43'46.080" | -120°25'56.457" |
| Drop Point | DP-75 | 47°44'45.781" | -120°31'38.108" |
| Drop Point | DP-76 | 47°42'22.533" | -120°30'51.104" |
| Drop Point | DP-251 | 47°53'31.713" | -120°26'27.709" |
| Drop Point | DP-252 | 47°54'34.930" | -120°29'7.531" |
| Drop Point | DP-253 | 47°50'35.988" | -120°28'13.368" |
| Drop Point | DP-254 | 47°50'17.664" | -120°29'12.840" |
| Drop Point | DP-255 | 47°56'50.064" | -120°31'30.792" |
| Drop Point | DP-256 | 47°57'56.808" | -120°32'58.488" |
| Incident Command Post | Entiat High School ICP | 47°40'0.748" | -120°13'43.738" |
| Staging Area | Overflow Camping | 47°40'38.802" | -120°12'19.402" |
| Staging Area | RSE Staging Area | 47°41'2.708" | -120°12'15.241" |
| Staging Area | Staging 12 | 47°46'4.656" | -120°22'12.861" |
| Staging Area | Staging 14 | 47°47'37.763" | -120°23'56.297" |
| Staging Area | Staging 18 | 47°50'12.208" | -120°25'5.639" |
| Staging Area | Staging 20 | 47°52'1.717" | -120°25'15.756" |



- Drop Point
- Incident Command Post
- ♂ Spot Fire
- Ⓢ Staging Area
-) Division Break
- Fire Perimeter
- Milepost Markers
- ▬ Highway
- ▬ Paved Road
- ▬ Gravel Road

ICP Location:
 Entiat High School
 2650 Entiat Way
 Entiat, WA 98822



North arrow pointing up.

Magnetic Declination: +15.19° E
 NAD 83
 2
 1:140,000