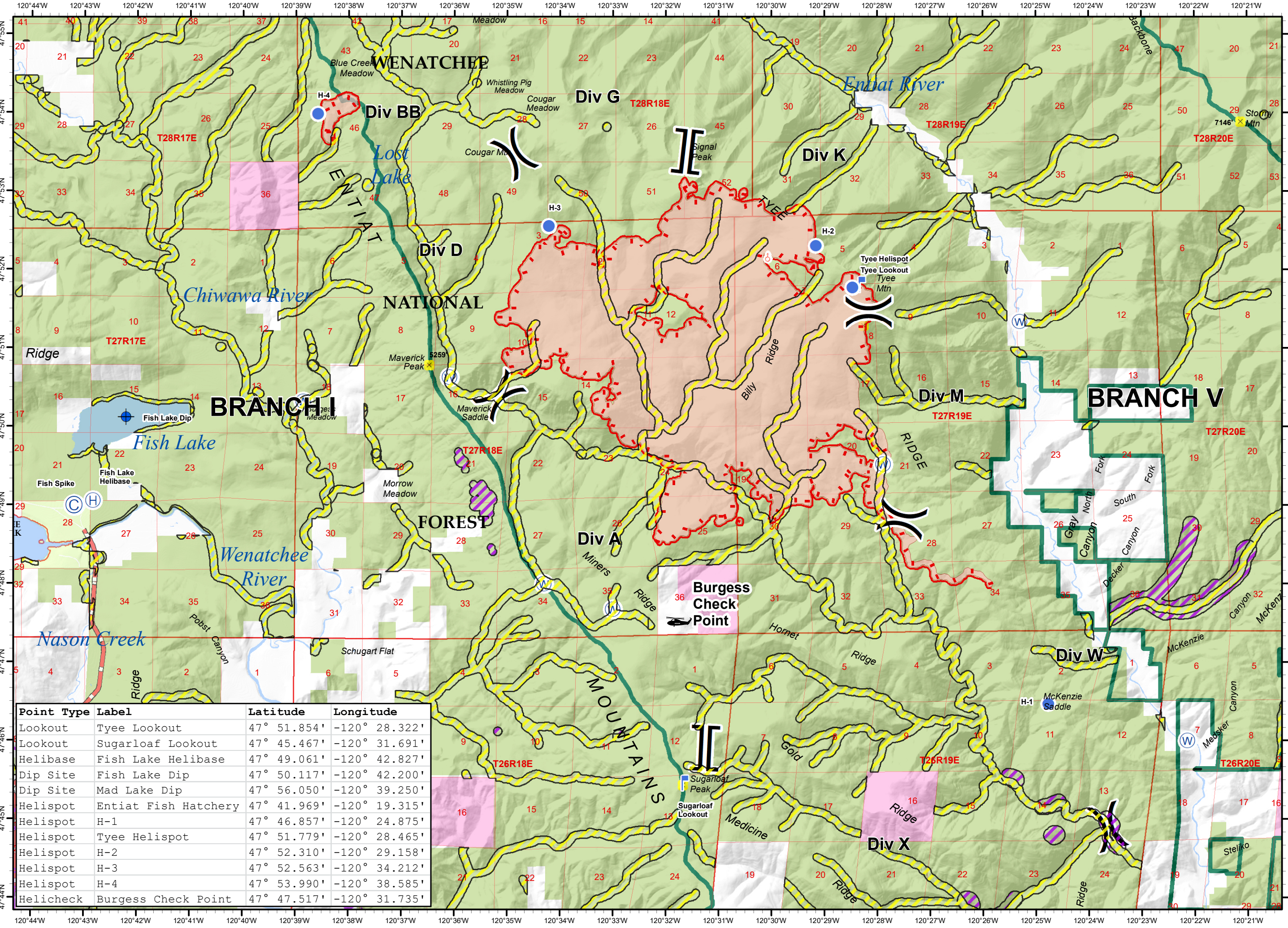


- Summits
- Camp
- Dip Site
- Helibase
- Helispot
- Lookout
- Spot Fire
- Water Source
- Division Break
- Branch Break
- Burgess Check Point
- Uncontrolled Fire Edge
- Retardant Exclusion Areas (Hydro)
- Retardant Exclusion Areas (Terrestrial)
- Transmission Line
- Highway
- DNR Lands
- Wenatchee Ranger Dist.
- Federal Government
- State Government



Point Type	Label	Latitude	Longitude
Lookout	Tyee Lookout	47° 51.854'	-120° 28.322'
Lookout	Sugarloaf Lookout	47° 45.467'	-120° 31.691'
Helibase	Fish Lake Helibase	47° 49.061'	-120° 42.827'
Dip Site	Fish Lake Dip	47° 50.117'	-120° 42.200'
Dip Site	Mad Lake Dip	47° 56.050'	-120° 39.250'
Helispot	Entiat Fish Hatchery	47° 41.969'	-120° 19.315'
Helispot	H-1	47° 46.857'	-120° 24.875'
Helispot	Tyee Helispot	47° 51.779'	-120° 28.465'
Helispot	H-2	47° 52.310'	-120° 29.158'
Helispot	H-3	47° 52.563'	-120° 34.212'
Helispot	H-4	47° 53.990'	-120° 38.585'
Helicheck	Burgess Check Point	47° 47.517'	-120° 31.735'