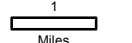


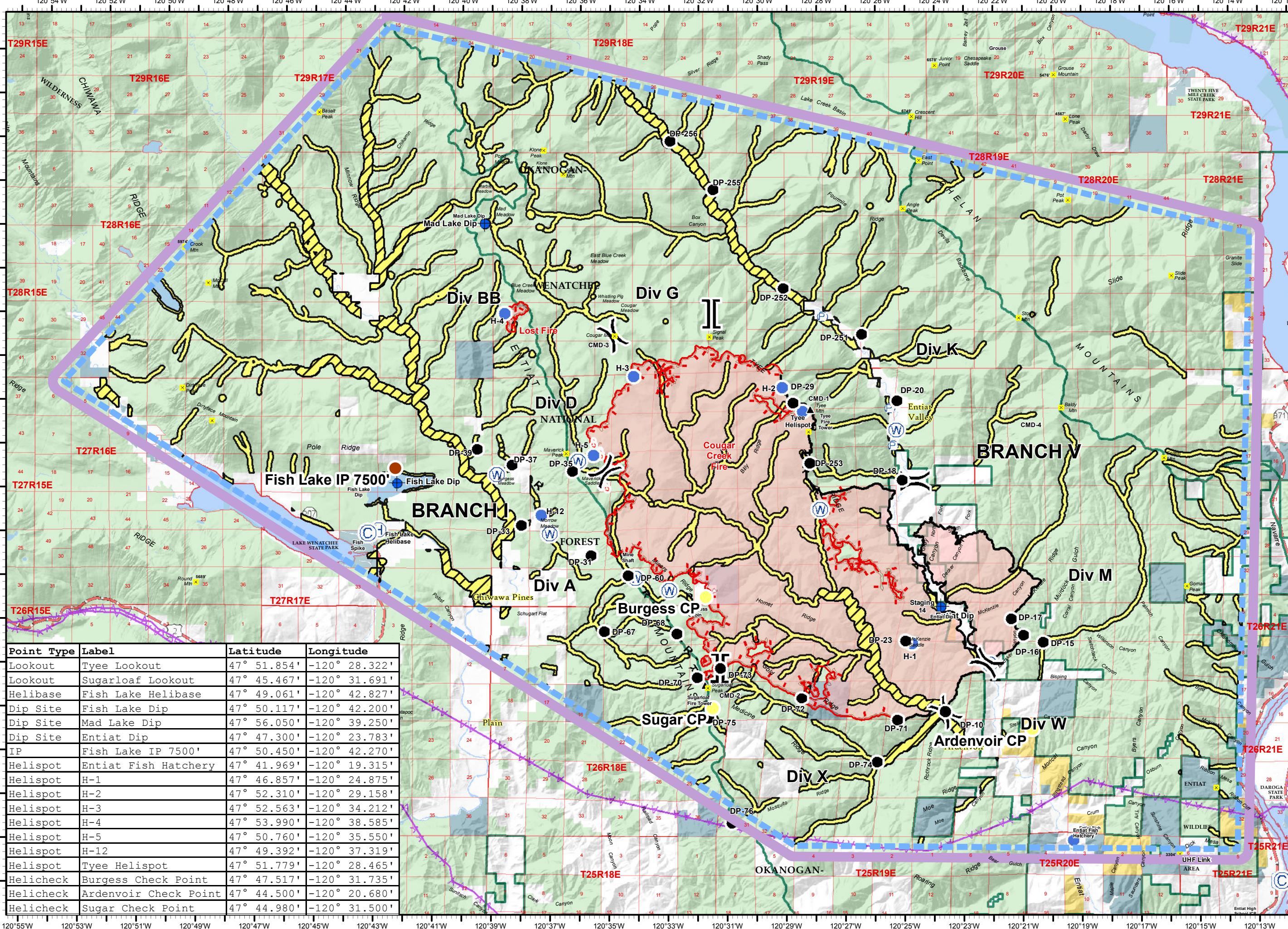
**Cougar Creek Fire**  
 WA-OWF-000419  
**Pilot Map**  
 08/20/2018 0600

Cougar Creek: 38,023 acres  
 Lost Fire: 80 acres



1:145,000

- Check Point
- IP
- Summits
- Fire Tower
- Camp
- Dip Site
- Drop Point
- Helibase
- Helispot
- Pump
- Spot Fire
- Water Source
- Water Tank
- Division Break
- Branch Break
- Uncontrolled Fire Edge
- Completed Line
- Road as Completed Line
- Wildfire Daily Fire Perimeter
- Wenatchee Ranger Dist.
- TFR Legend
- Retardant
- Avoidance Area (600ft)
- Retardant
- Avoidance Area (300ft)
- US BLM
- US FWS
- US Forest Service
- State/Local



Point Type	Label	Latitude	Longitude
Lookout	Tyee Lookout	47° 51.854'	-120° 28.322'
Lookout	Sugarloaf Lookout	47° 45.467'	-120° 31.691'
Helibase	Fish Lake Helibase	47° 49.061'	-120° 42.827'
Dip Site	Fish Lake Dip	47° 50.117'	-120° 42.200'
Dip Site	Mad Lake Dip	47° 56.050'	-120° 39.250'
Dip Site	Entiat Dip	47° 47.300'	-120° 23.783'
IP	Fish Lake IP 7500'	47° 50.450'	-120° 42.270'
Helispot	Entiat Fish Hatchery	47° 41.969'	-120° 19.315'
Helispot	H-1	47° 46.857'	-120° 24.875'
Helispot	H-2	47° 52.310'	-120° 29.158'
Helispot	H-3	47° 52.563'	-120° 34.212'
Helispot	H-4	47° 53.990'	-120° 38.585'
Helispot	H-5	47° 50.760'	-120° 35.550'
Helispot	H-12	47° 49.392'	-120° 37.319'
Helispot	Tyee Helispot	47° 51.779'	-120° 28.465'
Helicheck	Burgess Check Point	47° 47.517'	-120° 31.735'
Helicheck	Ardenvoir Check Point	47° 44.500'	-120° 20.680'
Helicheck	Sugar Check Point	47° 44.980'	-120° 31.500'



Magnetic Declination: +15.19° E  
 NAD 83