

# Cougar Creek Fire

WA-OWF-000419

## Pilot Map

8/22/2018

Map Created 08/21/2018 22:30

Cougar Creek: 38,924 acres

Lost Fire: 80 acres

0 0.5 1 2 3 Miles

1:145,000

● Check Point

● IP

✕ Summits

⊙ Camp

⊕ Dip Site

● Drop Point

⊕ Helibase

● Helispot

⊕ Pump

⊕ Spot Fire

⊕ Water Source

⊕ Water Tank

⊕ Division Break

⊕ Branch Break

— Uncontrolled Fire

— Edge

— Completed Line

R — Road as Completed Line

— Wildfire Daily Fire Perimeter

— Wenatchee Ranger Dist.

⊕ TFR legend

⊕ Retardant

⊕ Avoidance Area (600ft)

⊕ Retardant

⊕ Avoidance Area (300ft)

⊕ US BLM

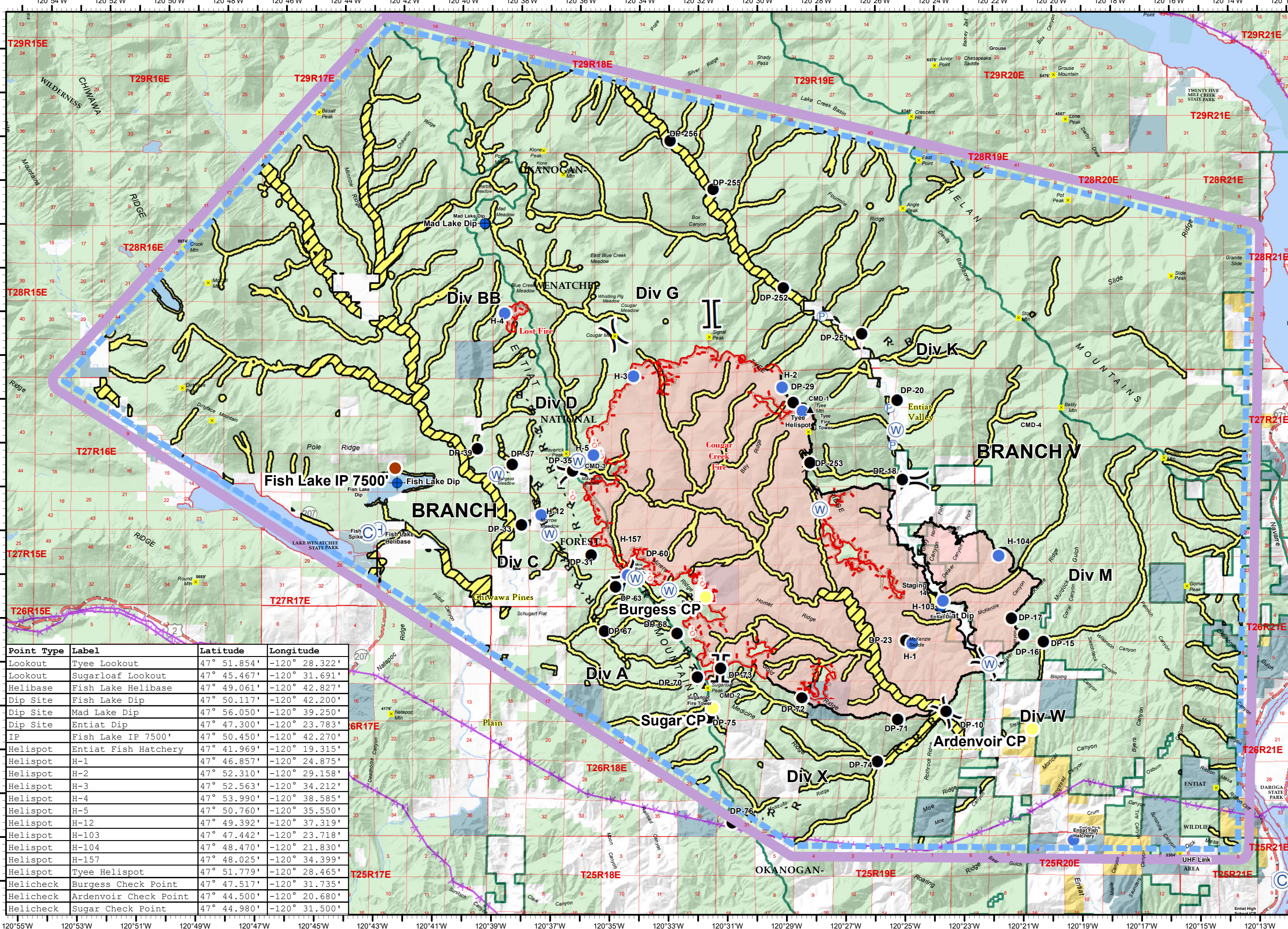
⊕ US FWS

⊕ US Forest Service

⊕ State/Local



Magnetic Declination: +15.19° E  
NAD 83



Point Type	Label	Latitude	Longitude
Lookout	Tyee Lookout	47° 51.854'	-120° 28.322'
Lookout	Sugarloaf Lookout	47° 45.467'	-120° 31.691'
Helibase	Fish Lake Helibase	47° 49.061'	-120° 42.827'
Dip Site	Fish Lake Dip	47° 50.117'	-120° 42.200'
Dip Site	Mad Lake Dip	47° 56.050'	-120° 39.250'
Dip Site	Entiat Dip	47° 47.300'	-120° 23.783'
IP	Fish Lake IP 7500'	47° 50.450'	-120° 42.270'
Helispot	Entiat Fish Hatchery	47° 41.969'	-120° 19.315'
Helispot	H-1	47° 46.857'	-120° 24.875'
Helispot	H-2	47° 52.310'	-120° 29.158'
Helispot	H-3	47° 52.563'	-120° 34.212'
Helispot	H-4	47° 53.990'	-120° 38.585'
Helispot	H-5	47° 50.760'	-120° 35.550'
Helispot	H-12	47° 49.392'	-120° 37.319'
Helispot	H-103	47° 47.442'	-120° 23.718'
Helispot	H-104	47° 48.470'	-120° 21.830'
Helispot	H-157	47° 48.025'	-120° 34.399'
Helispot	Tyee Helispot	47° 51.779'	-120° 28.465'
Helicheck	Burgess Check Point	47° 47.517'	-120° 31.735'
Helicheck	Ardenvoir Check Point	47° 44.500'	-120° 20.680'
Helicheck	Sugar Check Point	47° 44.980'	-120° 31.500'