

# Cougar Creek Fire

WA-OWF-000419

## Pilot Map

8/23/2018

Map Created 08/22/2018 22:30

Cougar Creek: 39,208 acres

Lost Fire: 80 acres

0 0.5 1 2 3 Miles

1:145,000

● Check Point

● IP

✕ Summits

⊙ Camp

⊕ Dip Site

● Drop Point

⊕ Helibase

● Helispot

⊕ Pump

⊕ Spot Fire

⊕ Water Source

⊕ Water Tank

) Division Break

|| Branch Break

— Uncontrolled Fire Edge

— Completed Line

R - Road as Completed Line

— Fire Perimeter

— Wenatchee Ranger Dist.

⊕ TFR legend

⊕ Retardant

⊕ Avoidance Area (600ft)

⊕ Retardant

⊕ Avoidance Area (300ft)

⊕ US BLM

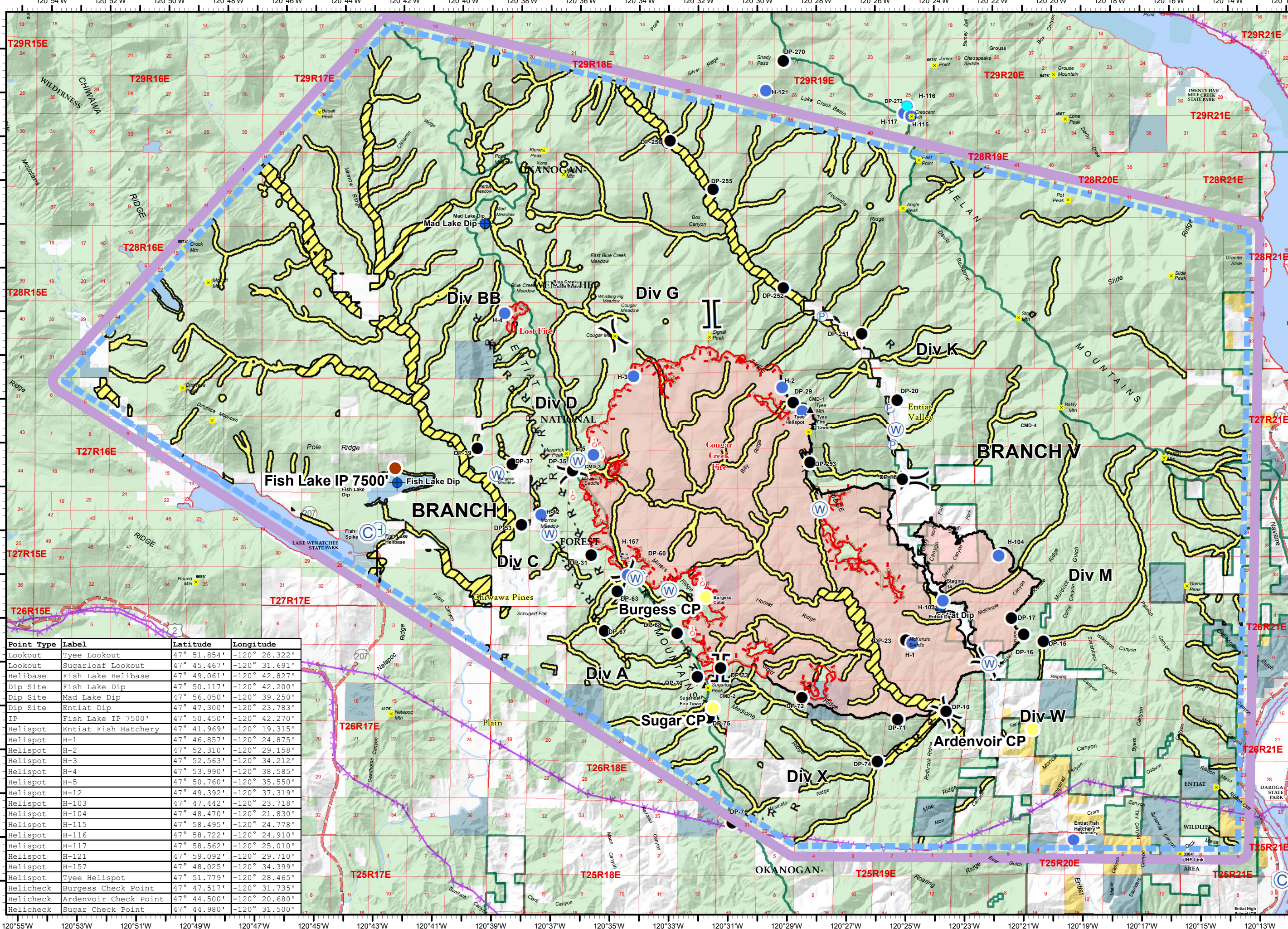
⊕ US FWS

⊕ US Forest Service

⊕ State



Magnetic Declination: +15.19° E  
NAD 83



| Point Type | Label                 | Latitude    | Longitude     |
|------------|-----------------------|-------------|---------------|
| Lookout    | Tyee Lookout          | 47° 51.854' | -120° 28.322' |
| Lookout    | Sugarloaf Lookout     | 47° 45.467' | -120° 31.691' |
| Helibase   | Fish Lake Helibase    | 47° 49.061' | -120° 42.827' |
| Dip Site   | Fish Lake Dip         | 47° 50.117' | -120° 42.200' |
| Dip Site   | Mad Lake Dip          | 47° 56.050' | -120° 39.250' |
| Dip Site   | Entiat Dip            | 47° 47.300' | -120° 23.783' |
| IP         | Fish Lake IP 7500'    | 47° 50.450' | -120° 42.270' |
| Helispot   | Entiat Fish Hatchery  | 47° 41.969' | -120° 19.315' |
| Helispot   | H-1                   | 47° 46.857' | -120° 24.875' |
| Helispot   | H-2                   | 47° 52.310' | -120° 29.158' |
| Helispot   | H-3                   | 47° 52.563' | -120° 34.212' |
| Helispot   | H-4                   | 47° 53.990' | -120° 38.585' |
| Helispot   | H-5                   | 47° 50.760' | -120° 35.550' |
| Helispot   | H-12                  | 47° 49.392' | -120° 37.319' |
| Helispot   | H-103                 | 47° 47.442' | -120° 23.718' |
| Helispot   | H-104                 | 47° 48.470' | -120° 21.830' |
| Helispot   | H-115                 | 47° 58.495' | -120° 24.778' |
| Helispot   | H-116                 | 47° 58.722' | -120° 24.910' |
| Helispot   | H-117                 | 47° 58.562' | -120° 25.010' |
| Helispot   | H-121                 | 47° 59.092' | -120° 29.710' |
| Helispot   | H-157                 | 47° 48.025' | -120° 34.399' |
| Helispot   | Tyee Helispot         | 47° 51.779' | -120° 28.465' |
| Helicheck  | Burgess Check Point   | 47° 47.517' | -120° 31.735' |
| Helicheck  | Ardenvoir Check Point | 47° 44.500' | -120° 20.680' |
| Helicheck  | Sugar Check Point     | 47° 44.980' | -120° 31.500' |