

Cougar Creek Fire

WA-OWF-000419

Pilot Map

8/29/2018

Map Created 08/28/2018 21:00

Cougar Creek: 41,324 acres

Lost Fire: 80 acres

0 0.5 1 2 3 Miles

1:145,000

● Check Point

● IP

▲ Structure

✕ Summits

○ Camp

● Dip Site

● Drop Point

⊕ Helibase

● Helispot

⊕ Water Source

) Division Break

|| Branch Break

— Uncontrolled Fire

— Edge

— Completed Line

R Road as Completed Line

■ Fire Perimeter

■ Wenatchee Ranger Dist.

■ Retardant

■ Avoidance Area (600ft)

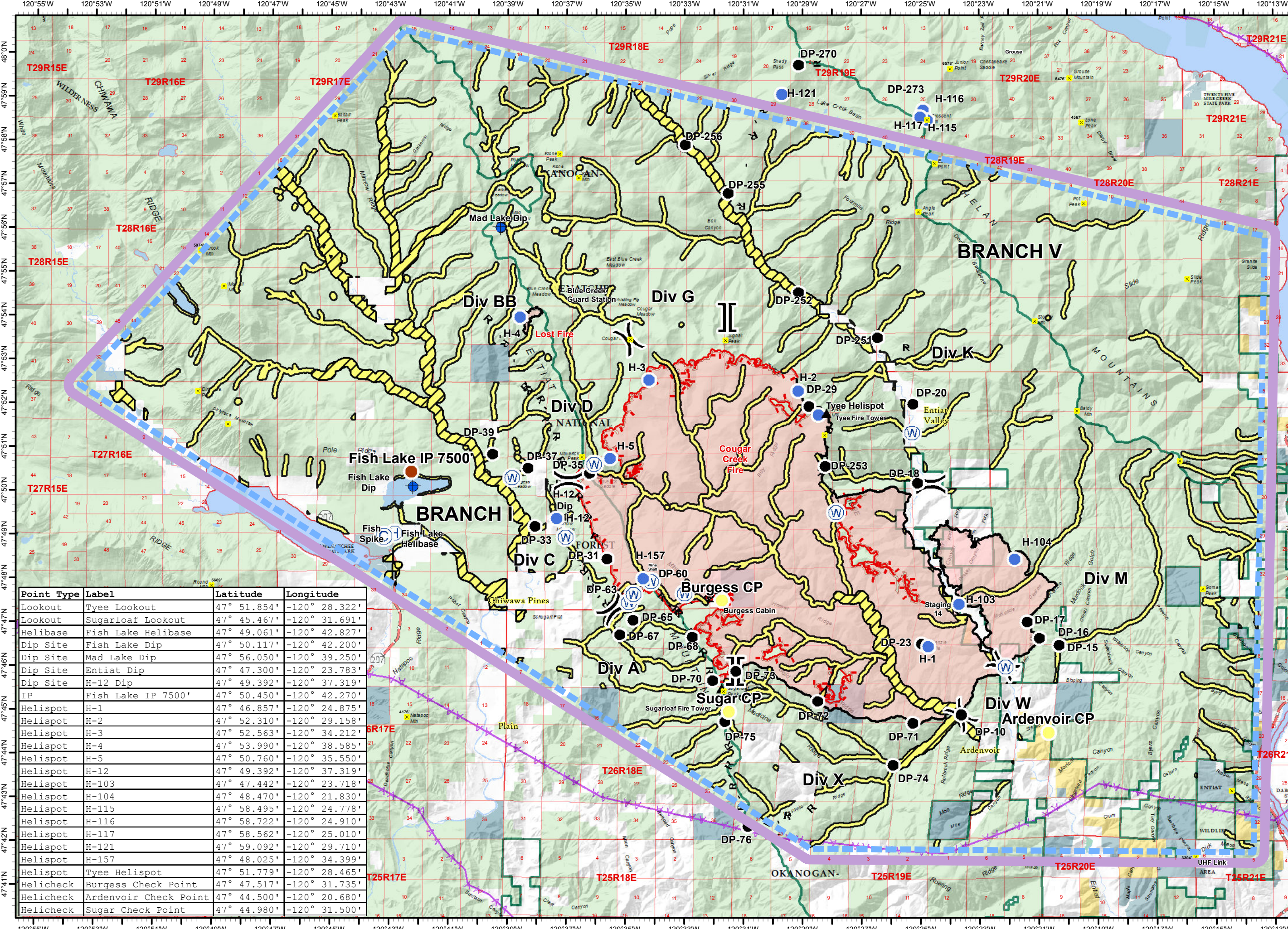
■ Retardant

■ Avoidance Area (300ft)



Magnetic Declination: +15.19° E

NAD 83



Point Type	Label	Latitude	Longitude
Lookout	Tyee Lookout	47° 51.854'	-120° 28.322'
Lookout	Sugarloaf Lookout	47° 45.467'	-120° 31.691'
Helibase	Fish Lake Helibase	47° 49.061'	-120° 42.827'
Dip Site	Fish Lake Dip	47° 50.117'	-120° 42.200'
Dip Site	Mad Lake Dip	47° 56.050'	-120° 39.250'
Dip Site	Entiat Dip	47° 47.300'	-120° 23.783'
Dip Site	H-12 Dip	47° 49.392'	-120° 37.319'
IP	Fish Lake IP 7500'	47° 50.450'	-120° 42.270'
Helispot	H-1	47° 46.857'	-120° 24.875'
Helispot	H-2	47° 52.310'	-120° 29.158'
Helispot	H-3	47° 52.563'	-120° 34.212'
Helispot	H-4	47° 53.990'	-120° 38.585'
Helispot	H-5	47° 50.760'	-120° 35.550'
Helispot	H-12	47° 49.392'	-120° 37.319'
Helispot	H-103	47° 47.442'	-120° 23.718'
Helispot	H-104	47° 48.470'	-120° 21.830'
Helispot	H-115	47° 58.495'	-120° 24.778'
Helispot	H-116	47° 58.722'	-120° 24.910'
Helispot	H-117	47° 58.562'	-120° 25.010'
Helispot	H-121	47° 59.092'	-120° 29.710'
Helispot	H-157	47° 48.025'	-120° 34.399'
Helispot	Tyee Helispot	47° 51.779'	-120° 28.465'
Helicheck	Burgess Check Point	47° 47.517'	-120° 31.735'
Helicheck	Ardenvoir Check Point	47° 44.500'	-120° 20.680'
Helicheck	Sugar Check Point	47° 44.980'	-120° 31.500'