

Cougar Creek Fire

WA-OWF-000419

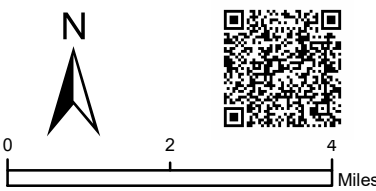
Transportation

8/29/2018

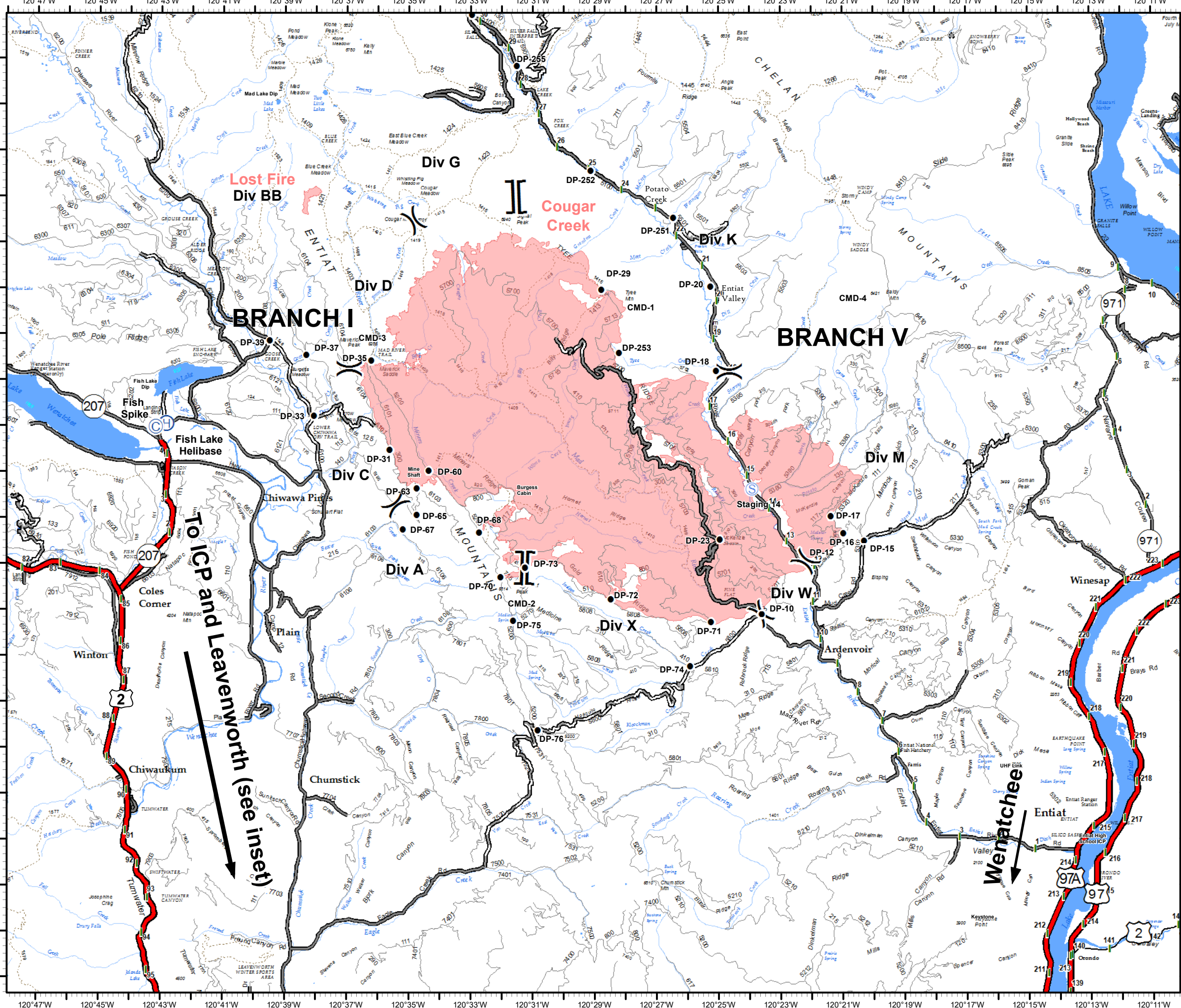
Map Created 8/28/18 20:30

- Drop Point
- ⊕ Helibase
- ⊙ Camp
- ▣ Incident Command Post
- ♂ Spot Fire
- ⊙ Staging Area
- ⌋ Division Break
- ⌋ Branch Break
- ▬ Milepost Markers
- ▬ Highway
- ▬ Paved Road
- ▬ Gravel Road
- ▬ Unimproved Road
- ▬ Fire Perimeter
- ▬ Trail

Label	Latitude	Longitude
DP-10	47° 44.909'	-120° 23.646'
DP-15	47° 46.501'	-120° 20.315'
DP-16	47° 46.669'	-120° 20.984'
DP-17	47° 47.043'	-120° 21.394'
DP-18	47° 50.203'	-120° 25.094'
DP-20	47° 52.029'	-120° 25.263'
DP-23	47° 46.537'	-120° 24.976'
DP-29	47° 51.973'	-120° 28.782'
DP-31	47° 48.489'	-120° 35.636'
DP-33	47° 49.165'	-120° 37.992'
DP-35	47° 50.410'	-120° 36.263'
DP-37	47° 50.548'	-120° 38.307'
DP-39	47° 50.901'	-120° 39.502'
DP-60	47° 48.027'	-120° 34.365'
DP-63	47° 47.651'	-120° 34.742'
DP-65	47° 47.076'	-120° 34.745'
DP-67	47° 46.753'	-120° 35.188'
DP-68	47° 46.697'	-120° 32.727'
DP-70	47° 45.708'	-120° 32.037'
DP-71	47° 44.723'	-120° 25.262'
DP-72	47° 45.223'	-120° 28.492'
DP-73	47° 45.912'	-120° 31.257'
DP-74	47° 43.768'	-120° 25.941'
DP-75	47° 44.763'	-120° 31.635'
DP-76	47° 42.376'	-120° 30.852'
DP-251	47° 53.529'	-120° 26.462'
DP-252	47° 54.582'	-120° 29.126'
DP-253	47° 50.600'	-120° 28.223'
DP-255	47° 56.834'	-120° 31.513'
DP-256	47° 57.947'	-120° 32.975'
DP-270	47° 59.765'	-120° 29.127'
DP-273	47° 58.722'	-120° 24.910'
CMD-1	47° 51.850'	-120° 28.297'
CMD-2	47° 45.426'	-120° 31.674'
CMD-3	47° 53.473'	-120° 34.842'
CMD-4	47° 51.465'	-120° 20.182'
Fish Lake Helibase	47° 49.061'	-120° 42.827'
Fish Spike	47° 48.997'	-120° 43.180'
Mine Shaft	47° 48.077'	-120° 34.397'
Staging 14	47° 47.629'	-120° 23.938'
Sugarloaf Fire Tower	47° 45.467'	-120° 31.691'
Tyee Fire Tower	47° 51.814'	-120° 28.341'
Leavenworth ICP	47° 33.478'	-120° 40.143'



ICP Location:
 Leavenworth Fish Hatchery
 12790 Fish Hatchery Rd
 Leavenworth, WA 98826



To ICP and Leavenworth (see inset)

Wenatchee

