

# Cougar Creek Fire

## WA-OWF-000419

### Briefing Map

9/3/2018  
Map Created 9/2/2018 1830  
Cougar Creek - 42,134 ac  
Lost Fire - 80 ac

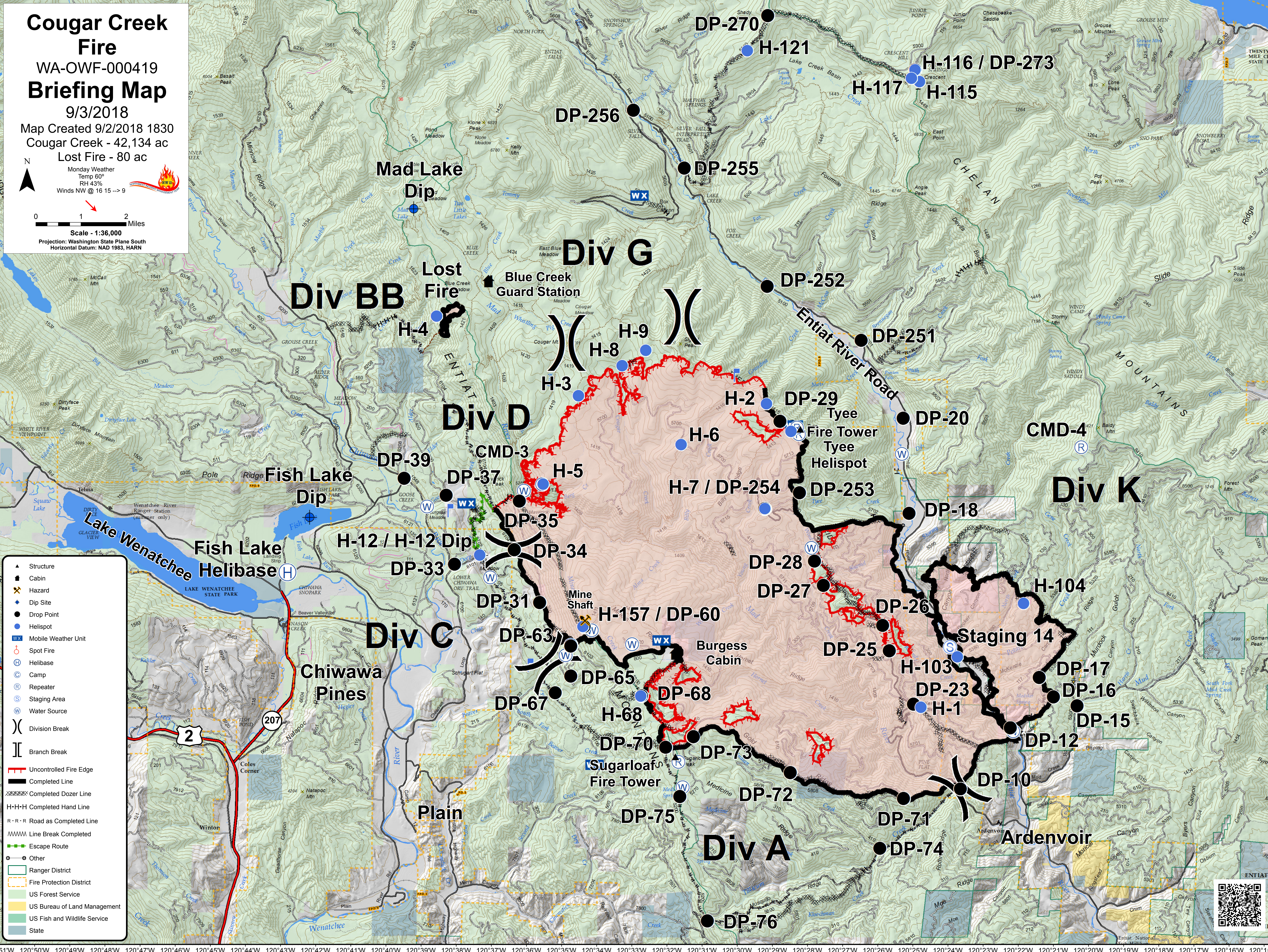
Monday Weather  
Temp 60°  
RH 43%  
Winds NW @ 16 15 --> 9



Scale - 1:36,000  
Projection: Washington State Plane South  
Horizontal Datum: NAD 1983, HARN

47°59'N  
47°58'N  
47°57'N  
47°56'N  
47°55'N  
47°54'N  
47°53'N  
47°52'N  
47°51'N  
47°50'N  
47°49'N  
47°48'N  
47°47'N  
47°46'N  
47°45'N  
47°44'N  
47°43'N

120°15'W  
120°16'W  
120°17'W  
120°18'W  
120°19'W  
120°20'W  
120°21'W  
120°22'W  
120°23'W  
120°24'W  
120°25'W  
120°26'W  
120°27'W  
120°28'W  
120°29'W  
120°30'W  
120°31'W  
120°32'W  
120°33'W  
120°34'W  
120°35'W  
120°36'W  
120°37'W  
120°38'W  
120°39'W  
120°40'W  
120°41'W  
120°42'W  
120°43'W  
120°44'W  
120°45'W  
120°46'W  
120°47'W  
120°48'W  
120°49'W  
120°50'W  
120°51'W



- ▲ Structure
- 🏠 Cabin
- ⚡ Hazard
- Dip Site
- Drop Point
- Helispot
- WX Mobile Weather Unit
- 🔥 Spot Fire
- Ⓜ Helibase
- Ⓜ Camp
- Ⓜ Repeater
- Ⓜ Staging Area
- Ⓜ Water Source
- ) Division Break
- || Branch Break
- Uncontrolled Fire Edge
- Completed Line
- ⋯ Completed Dozer Line
- H-H-H Completed Hand Line
- R-R-R Road as Completed Line
- ||||| Line Break Completed
- Escape Route
- Other
- Ranger District
- Fire Protection District
- US Forest Service
- US Bureau of Land Management
- US Fish and Wildlife Service
- State

