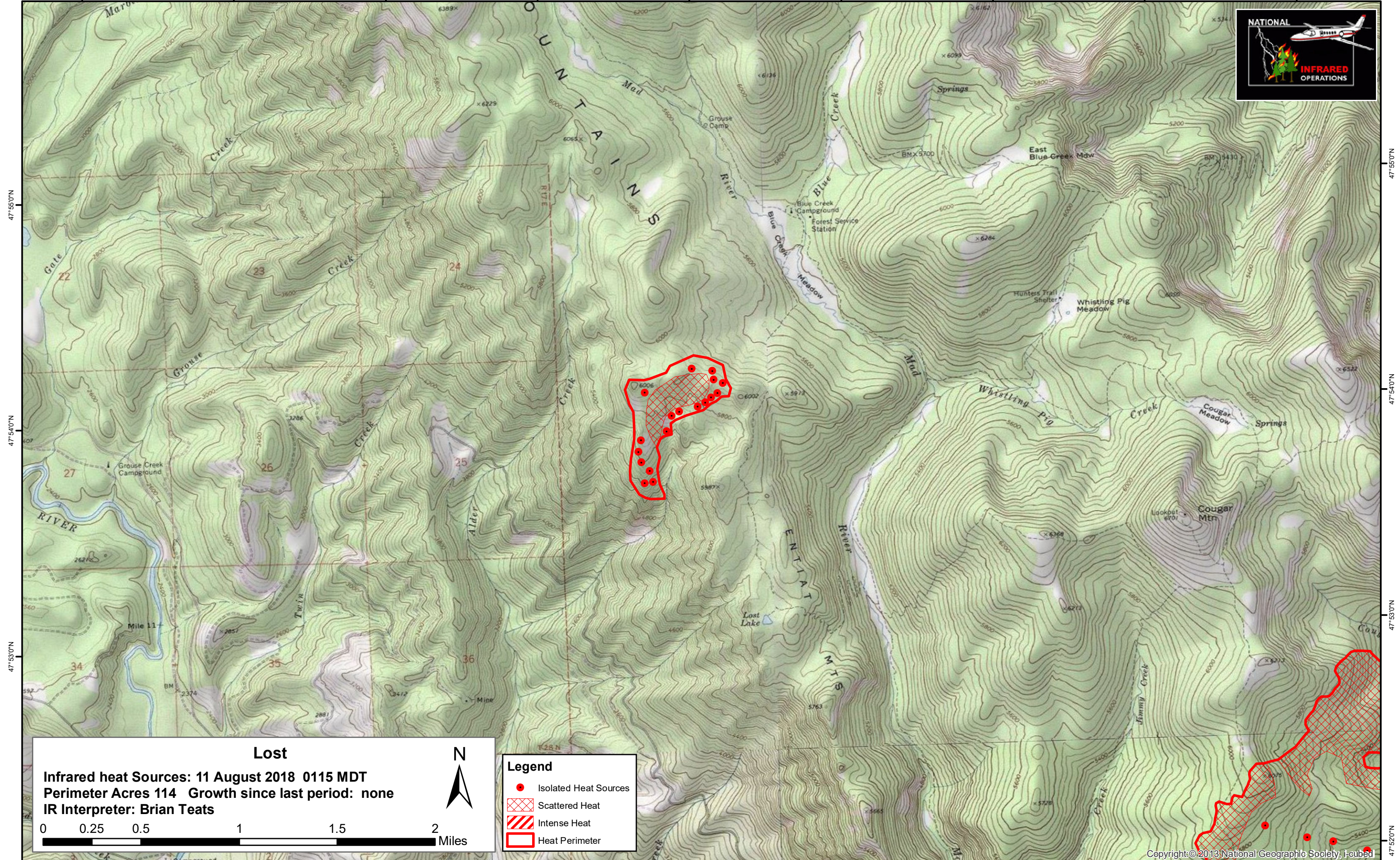


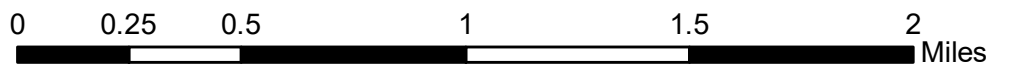
120°42'0"W 120°41'0"W 120°40'0"W 120°39'0"W 120°38'0"W 120°37'0"W 120°36'0"W 120°35'0"W 120°34'0"W



Lost
Infrared heat Sources: 11 August 2018 0115 MDT
Perimeter Acres 114 Growth since last period: none
IR Interpreter: Brian Teats



- Legend**
- Isolated Heat Sources
 - Scattered Heat
 - Intense Heat
 - Heat Perimeter



120°42'0"W 120°41'0"W 120°40'0"W 120°39'0"W 120°38'0"W 120°37'0"W 120°36'0"W 120°35'0"W 120°34'0"W

47°55'0"N

47°54'0"N

47°53'0"N

47°55'0"N

47°54'0"N

47°53'0"N

47°52'0"N