

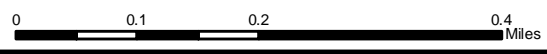
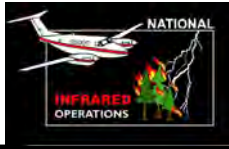
121°41'W

121°40'W

Infrared Map
Fan Lake (WA_MRP-000198)
Map Date: 08/25/2018
Imagery Date: 08/25/2018
Imagery Time: 0141 MDT
IR Interpreted Acres: 15 acres
IRIN: Tammy Hocut

- Isolated Heat Sources
- Heat Perimeter
- Intense Heat
- Scattered Heat

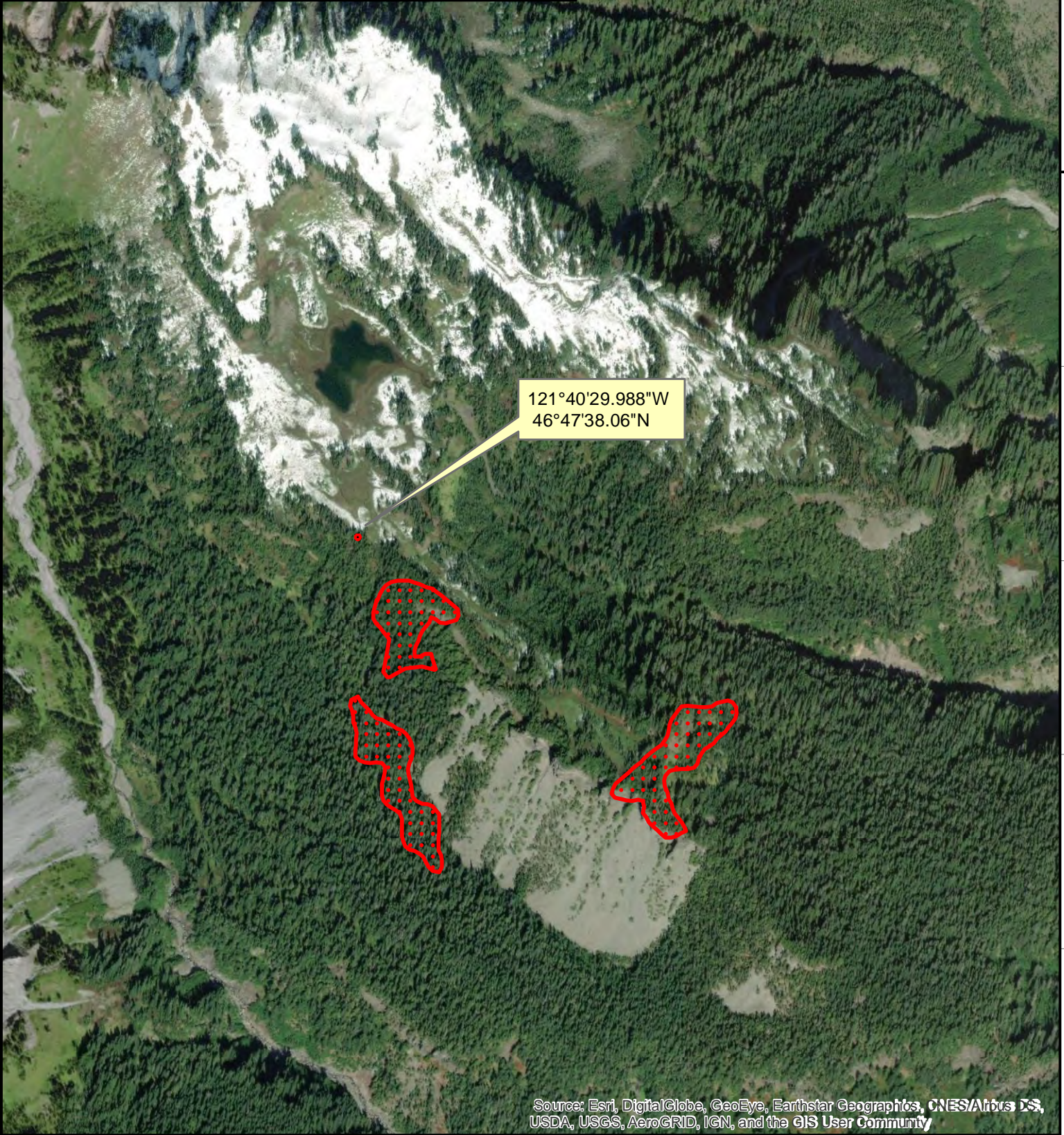
WGS 1984 UTM Zone 10N



46°48'N

46°48'N

121°40'29.988"W
 46°47'38.06"N



Source: Esri, DigitalGlobe, GeoEye, Earthstar Geographics, CNES/Airbus DS, USDA, USGS, AeroGRID, IGN, and the GIS User Community

121°41'W

121°40'W