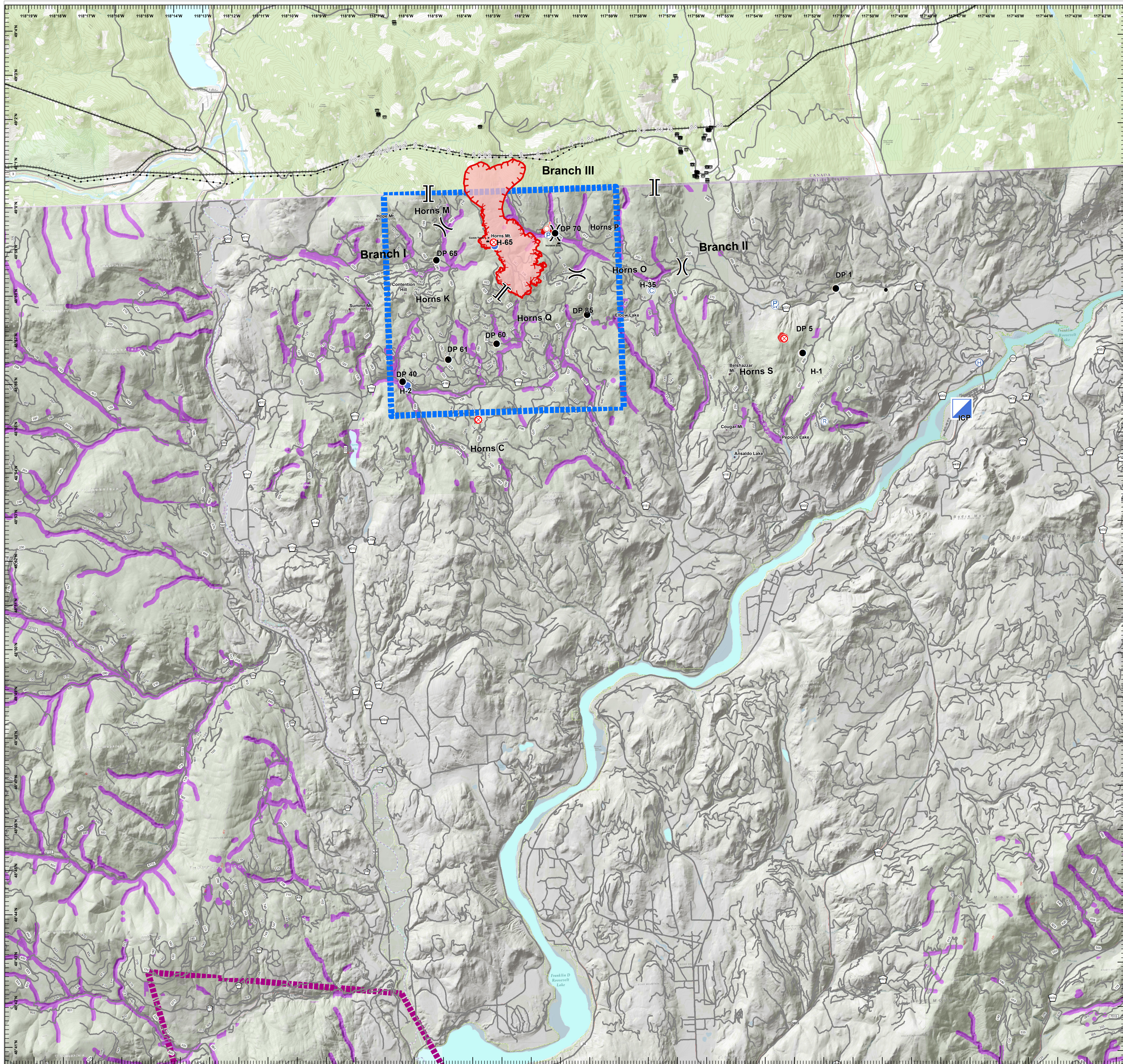


**Aviation Map
August 19,2018
WA-COF-001907
Horns Mountain Fire- 2,176 acres
as of 8/17, 1900 PDT**



FeatureCat	Label	Comments	LatWGS84_D	LongWGS84
Drop Point	DP 5		N48° 56.220'	W117° 52.747'
Drop Point	DP 40		N48° 55.768'	W118° 6.573'
Drop Point	DP 60		N48° 56.547'	W118° 3.297'
Drop Point	DP 85		N48° 57.132'	W118° 0.147'
Drop Point	DP 1	Divs S staging area	N48° 57.515'	W117° 51.562'
Drop Point	DP 70		N48° 59.005'	W118° 1.142'
Drop Point	DP 61		N48° 56.228'	W118° 4.975'
Drop Point	DP 65		N48° 58.486'	W118° 5.261'
Helibase			N48° 55.709'	W117° 46.732'
Helispot	H- 1	Div S - T 1	N48° 56.078'	W117° 52.818'
Helispot	H - 2	Div C - T 1	N48° 55.678'	W118° 6.407'
Helispot	H - 65	Div K - T - 3	N48° 58.758'	W118° 3.236'
Helispot	H - 35	Div Q - T 2	N48° 57.635'	W117° 57.930'
Incident Command	Rosts Mtn		N48° 54.683'	W117° 47.393'
Repeater		from FTP	N48° 54.516'	W117° 52.123'
Spot Fire			N48° 59.123'	W118° 1.423'
Value at Risk	Comm Tower		N48° 58.913'	W118° 3.455'
Value at Risk	Incident Site	Plane Crash Site	N48° 58.811'	W118° 1.023'
Water Source	Sheep Creek Fill		N48° 57.172'	W117° 53.674'

Legend	
	Camp
	Dip Site
	Drop Point
	Helibase
	Helispot
	Incident Command Post
	Pump
	Repeater
	Spot Fire
	Water Source
	Value at Risk
	Division Break
	Branch Break
	Uncontrolled Fire Edge
	Completed Dozer Line
	Roads
	Powerline
	Pipeline
	Wildfire Daily Fire Perimeter
	RetardantAvoid
	Horns Mountain TFR
	Boyd TFR

Miles

