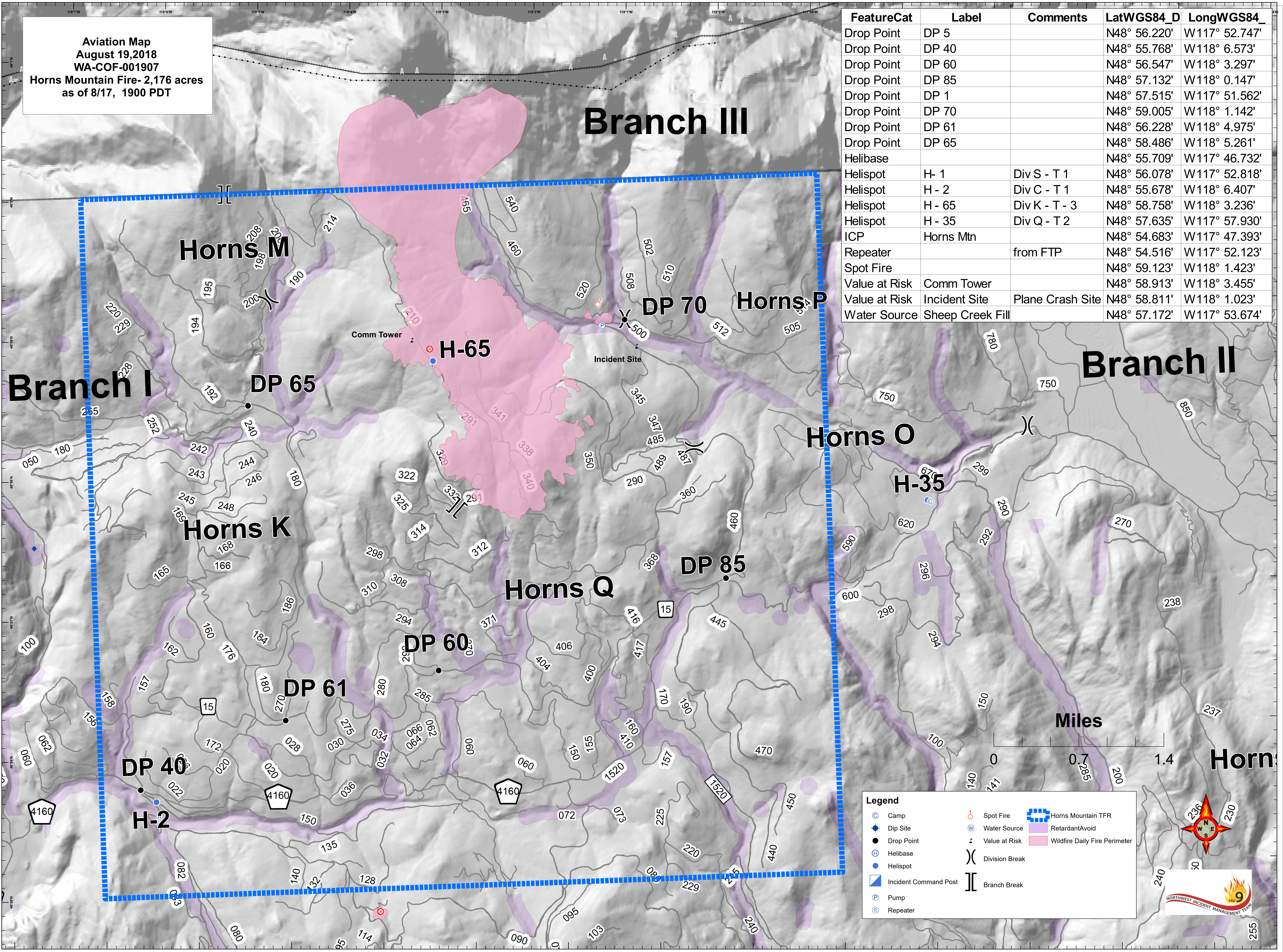


Aviation Map
 August 19, 2018
 WA-COF-001907
 Horns Mountain Fire- 2,176 acres
 as of 8/17, 1900 PDT

FeatureCat	Label	Comments	LatWGS84_D	LongWGS84_
Drop Point	DP 5		N48° 56.220'	W117° 52.747'
Drop Point	DP 40		N48° 55.768'	W118° 6.573'
Drop Point	DP 60		N48° 56.547'	W118° 3.297'
Drop Point	DP 85		N48° 57.132'	W118° 0.147'
Drop Point	DP 1		N48° 57.515'	W117° 51.562'
Drop Point	DP 70		N48° 59.005'	W118° 1.142'
Drop Point	DP 61		N48° 56.228'	W118° 4.975'
Drop Point	DP 65		N48° 58.486'	W118° 5.261'
Helibase			N48° 55.709'	W117° 46.732'
Helispot	H- 1	Div S - T 1	N48° 56.078'	W117° 52.818'
Helispot	H- 2	Div C - T 1	N48° 55.678'	W118° 6.407'
Helispot	H- 65	Div K - T - 3	N48° 58.758'	W118° 3.236'
Helispot	H- 35	Div Q - T 2	N48° 57.635'	W117° 57.930'
ICP	Horns Mtn		N48° 54.683'	W117° 47.393'
Repeater		from FTP	N48° 54.516'	W117° 52.123'
Spot Fire			N48° 59.123'	W118° 1.423'
Value at Risk	Comm Tower		N48° 58.913'	W118° 3.455'
Value at Risk	Incident Site	Plane Crash Site	N48° 58.811'	W118° 1.023'
Water Source	Sheep Creek Fill		N48° 57.172'	W117° 53.674'



Legend

Camp	Spot Fire	Horns Mountain TFR
Dip Site	Water Source	Retardant/Avoid
Drop Point	Value at Risk	Wildfire Daily Fire Perimeter
Helibase	Division Break	
Helispot	Branch Break	
Incident Command Post		
Pump		
Repeater		

