
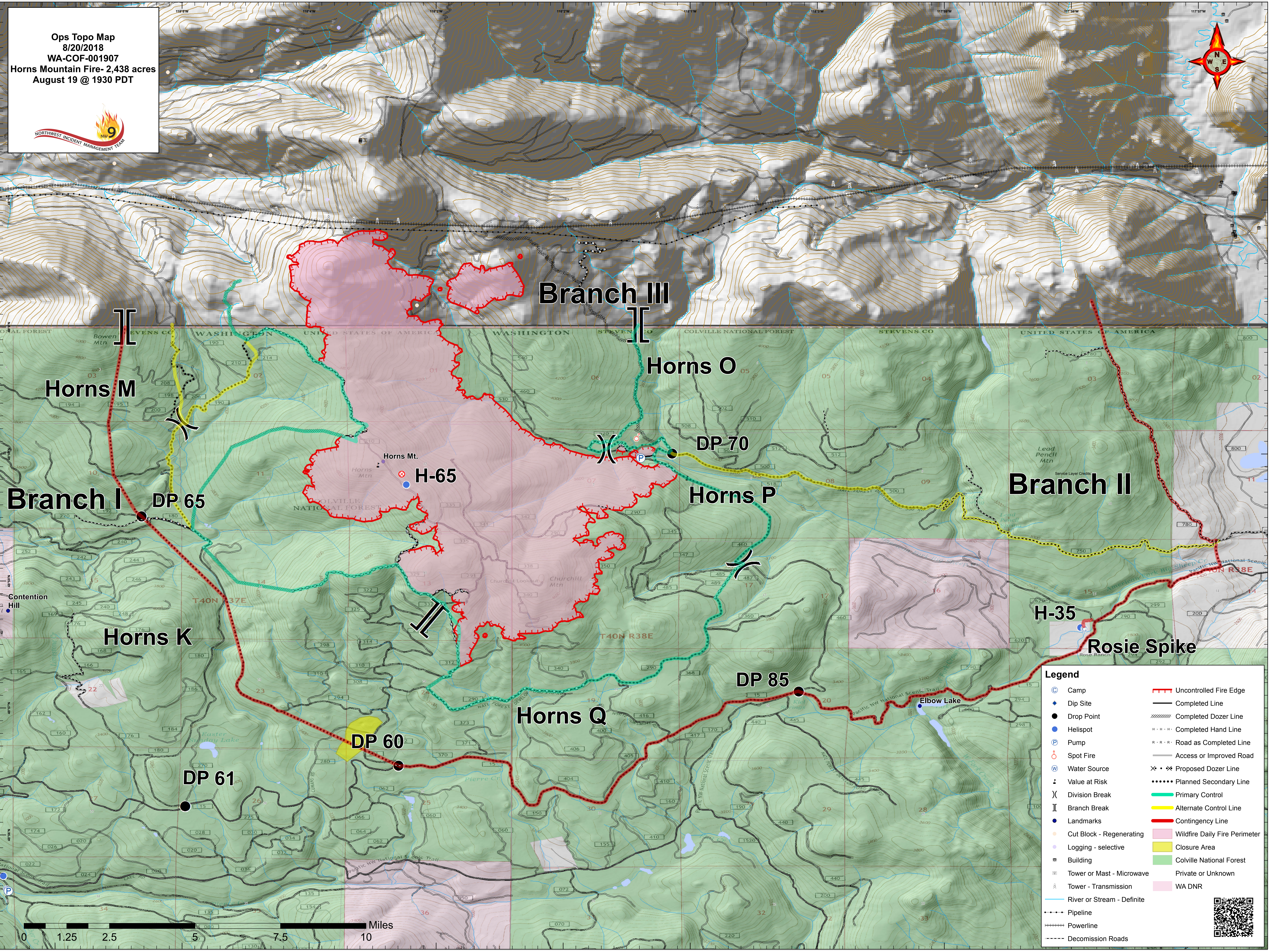


Ops Topo Map
 8/20/2018
 WA-COF-001907
 Horns Mountain Fire- 2,438 acres
 August 19 @ 1930 PDT

Legend

● (blue)	Camp	— (red)	Uncontrolled Fire Edge
◆ (blue)	Dip Site	— (black)	Completed Line
● (black)	Drop Point	— (dashed)	Completed Dozer Line
● (blue)	Helispot	— (dotted)	Completed Hand Line
P (blue)	Pump	— (dotted)	Road as Completed Line
○ (red)	Spot Fire	— (dotted)	Access or Improved Road
W (blue)	Water Source	✕ (black)	Proposed Dozer Line
⚠ (black)	Value at Risk	••••• (black)	Planned Secondary Line
) (black)	Division Break	— (green)	Primary Control
(black)	Branch Break	— (yellow)	Alternate Control Line
● (black)	Landmarks	— (red)	Contingency Line
○ (black)	Cut Block - Regenerating	— (pink)	Wildfire Daily Fire Perimeter
● (black)	Logging - selective	— (yellow)	Closure Area
■ (black)	Building	— (green)	Colville National Forest
⊙ (black)	Tower or Mast - Microwave	— (pink)	Private or Unknown
⊙ (black)	Tower - Transmission	— (pink)	WA DNR
— (blue)	River or Stream - Definite		
— (dotted)	Pipeline		
— (dashed)	Powerline		
— (dashed)	Decomission Roads		

