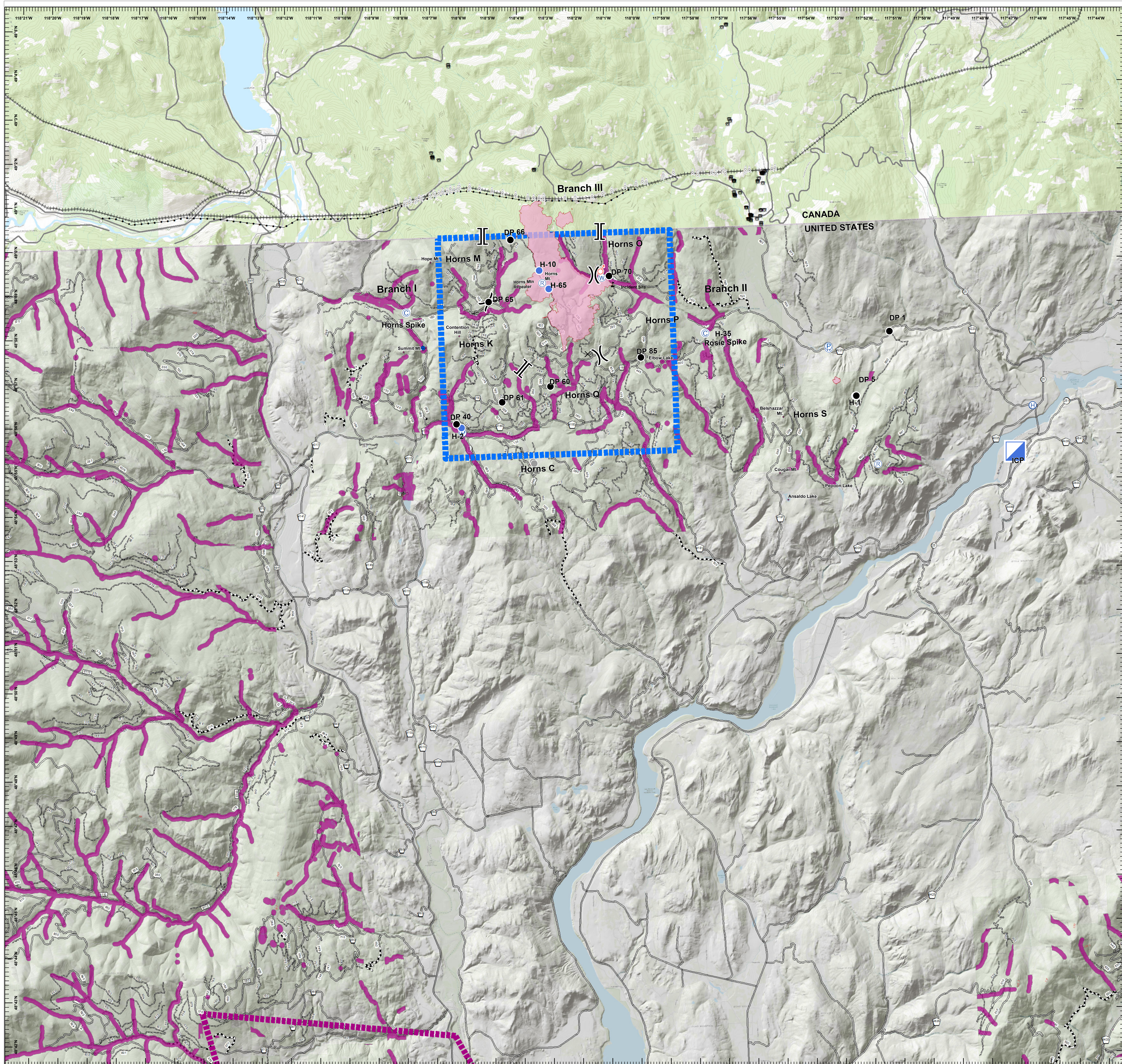


Aviation Map
August 21, 2018
WA-COF-001907
Horns Mountain Fire- 2,467 acres
as of 8/20, 1700 PDT



FeatureCategory	Label	LatWGS84_DDM	LongWGS84_DDM
Camp	Rosie Spike	N48° 57.625'	W117° 57.899'
Camp	Horns Spike	N48° 58.329'	W118° 8.169'
Dip Site	Summit Lake Dip	N48° 57.519'	W118° 7.636'
Drop Point	DP 5	N48° 56.081'	W117° 52.787'
Drop Point	DP 40	N48° 55.768'	W118° 6.573'
Drop Point	DP 60	N48° 56.547'	W118° 3.297'
Drop Point	DP 85	N48° 57.132'	W118° 0.147'
Drop Point	DP 1	N48° 57.515'	W117° 51.562'
Drop Point	DP 70	N48° 59.005'	W118° 1.142'
Drop Point	DP 61	N48° 56.228'	W118° 4.975'
Drop Point	DP 65	N48° 58.511'	W118° 5.319'
Drop Point	DP 67	N48° 59.177'	W118° 3.544'
Drop Point	DP 66	N48° 59.899'	W118° 4.493'
Helibase	H-1	N48° 55.709'	W117° 46.732'
Helibase	H- 2	N48° 56.078'	W117° 52.818'
Helibase	H- 65	N48° 55.678'	W118° 6.407'
Helibase	H- 35	N48° 58.758'	W118° 3.236'
Helibase	H- 10	N48° 57.635'	W117° 57.930'
Helibase	H- 10	N48° 59.183'	W118° 3.543'
Incident Command Post	Horns Mtn	N48° 54.683'	W117° 47.393'
Repeater	Flagstaff	N48° 54.516'	W117° 52.123'
Repeater	Horns Mtn	N48° 58.898'	W118° 3.452'
Spot Fire		N48° 57.105'	W117° 51.122'
Spot Fire		N48° 57.295'	W117° 49.347'
Spot Fire		N48° 57.123'	W118° 1.423'
Value at Risk	Crash Site	N48° 58.811'	W118° 1.023'
Water Source	Sheep Creek Fill	N48° 57.172'	W117° 53.674'

Legend

- Camp
- Closure
- Dip Site
- Drop Point
- Helibase
- Helispot
- Incident Command Post
- Pump
- Repeater
- Spot Fire
- Water Source
- Value at Risk
- Other
- Division Break
- Branch Break
- Powerline
- Pipeline
- Roads
- RetardantAvoid
- Wildfire Daily Fire Perimeter
- Horns Mountain TFR
- Boyd TFR

Miles

0 2.5 5