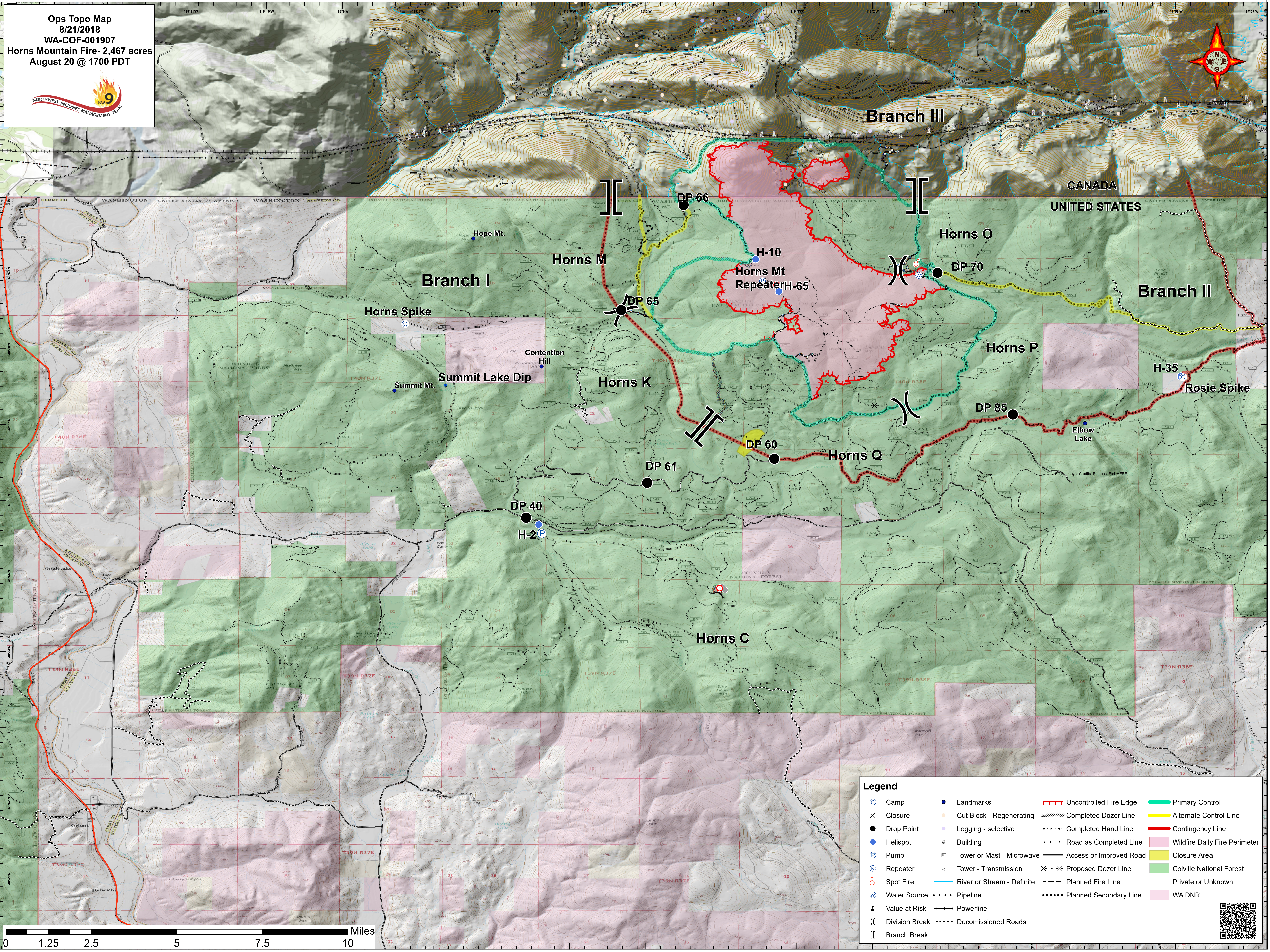


Ops Topo Map
8/21/2018
WA-COF-001907
Horns Mountain Fire- 2,467 acres
August 20 @ 1700 PDT

Legend			
⊙	Camp	●	Landmarks
×	Closure	●	Cut Block - Regenerating
●	Drop Point	●	Logging - selective
●	Helispot	■	Building
P	Pump	⊙	Tower or Mast - Microwave
⊙	Repeater	⊙	Tower - Transmission
⊙	Spot Fire	⊙	River or Stream - Definite
⊙	Water Source	⊙	Pipeline
⊙	Value at Risk	⊙	Powerline
⊙	Division Break	⊙	Decommissioned Roads
⊙	Branch Break	⊙	Uncontrolled Fire Edge
⊙		⊙	Completed Dozer Line
⊙		⊙	Completed Hand Line
⊙		⊙	Road as Completed Line
⊙		⊙	Access or Improved Road
⊙		⊙	Proposed Dozer Line
⊙		⊙	Planned Fire Line
⊙		⊙	Planned Secondary Line
⊙		⊙	Primary Control
⊙		⊙	Alternate Control Line
⊙		⊙	Contingency Line
⊙		⊙	Wildfire Daily Fire Perimeter
⊙		⊙	Closure Area
⊙		⊙	Colville National Forest
⊙		⊙	Private or Unknown
⊙		⊙	WA DNR

