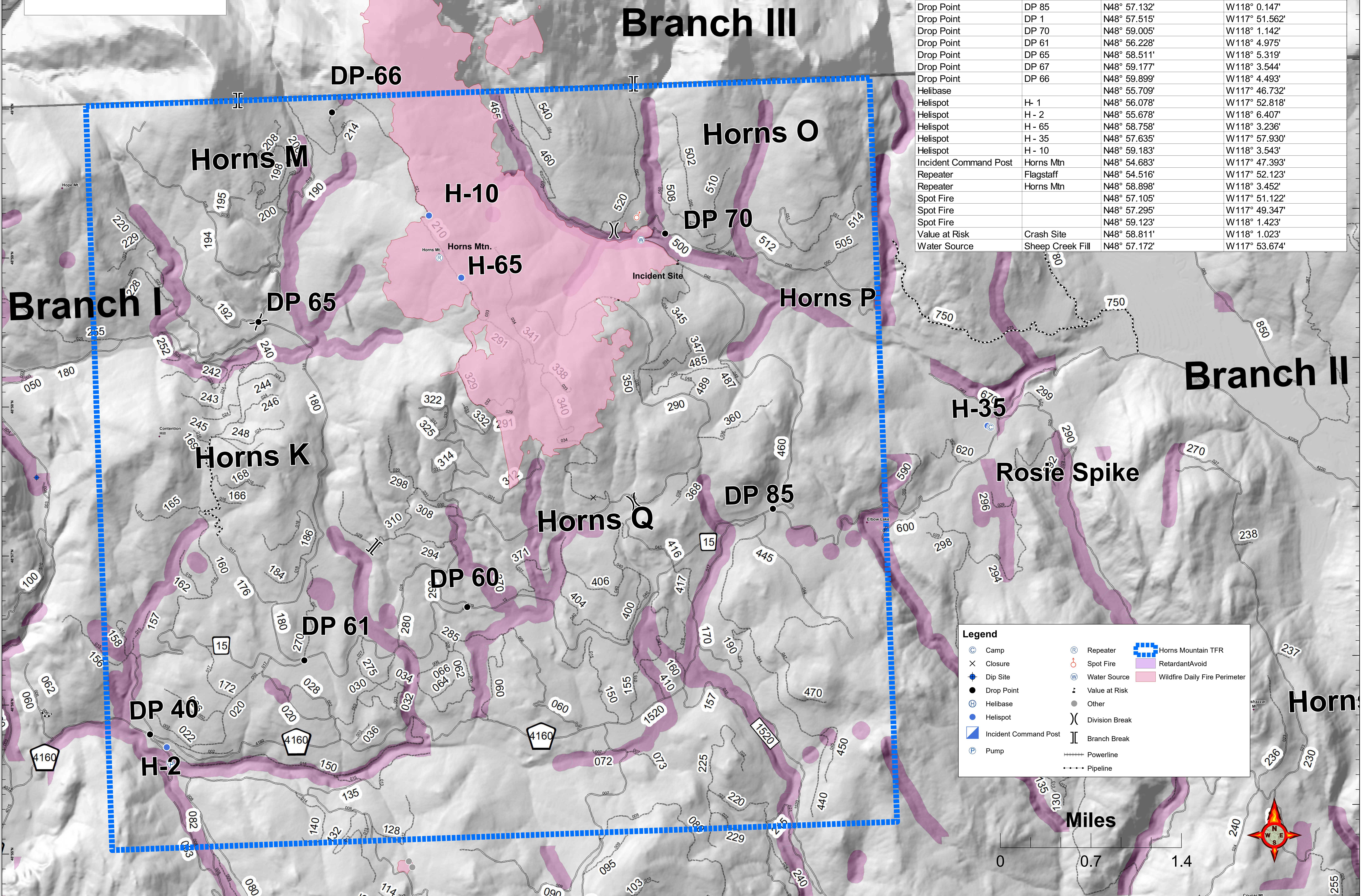


Pilot Map
August 21, 2018
WA-COF-001907
Horns Mountain Fire- 2,467 acres
as of 8/20, 1700 PDT



| FeatureCategory | Label | LatWGS84_DDM | LongWGS84_DDM |
|-----------------------|------------------|--------------|---------------|
| Camp | Rosie Spike | N48° 57.625' | W117° 57.899' |
| Camp | Horns Spike | N48° 58.329' | W118° 8.169' |
| Dip Site | Summit Lake Dip | N48° 57.519' | W118° 7.636' |
| Drop Point | DP 5 | N48° 56.081' | W117° 52.787' |
| Drop Point | DP 40 | N48° 55.768' | W118° 6.573' |
| Drop Point | DP 60 | N48° 56.547' | W118° 3.297' |
| Drop Point | DP 85 | N48° 57.132' | W118° 0.147' |
| Drop Point | DP 1 | N48° 57.515' | W117° 51.562' |
| Drop Point | DP 70 | N48° 59.005' | W118° 1.142' |
| Drop Point | DP 61 | N48° 56.228' | W118° 4.975' |
| Drop Point | DP 65 | N48° 58.511' | W118° 5.319' |
| Drop Point | DP 67 | N48° 59.177' | W118° 3.544' |
| Drop Point | DP 66 | N48° 59.899' | W118° 4.493' |
| Helibase | | N48° 55.709' | W117° 46.732' |
| Helispot | H - 1 | N48° 56.078' | W117° 52.818' |
| Helispot | H - 2 | N48° 55.678' | W118° 6.407' |
| Helispot | H - 65 | N48° 58.758' | W118° 3.236' |
| Helispot | H - 35 | N48° 57.635' | W117° 57.930' |
| Helispot | H - 10 | N48° 59.183' | W118° 3.543' |
| Incident Command Post | Horns Mtn | N48° 54.683' | W117° 47.393' |
| Repeater | Flagstaff | N48° 54.516' | W117° 52.123' |
| Repeater | Horns Mtn | N48° 58.898' | W118° 3.452' |
| Spot Fire | | N48° 57.105' | W117° 51.122' |
| Spot Fire | | N48° 57.295' | W117° 49.347' |
| Spot Fire | | N48° 59.123' | W118° 1.423' |
| Value at Risk | Crash Site | N48° 58.811' | W118° 1.023' |
| Water Source | Sheep Creek Fill | N48° 57.172' | W117° 53.674' |



Legend

| | | |
|--|--|--|
| | | |
| | | |
| | | |
| | | |
| | | |
| | | |
| | | |
| | | |
| | | |

