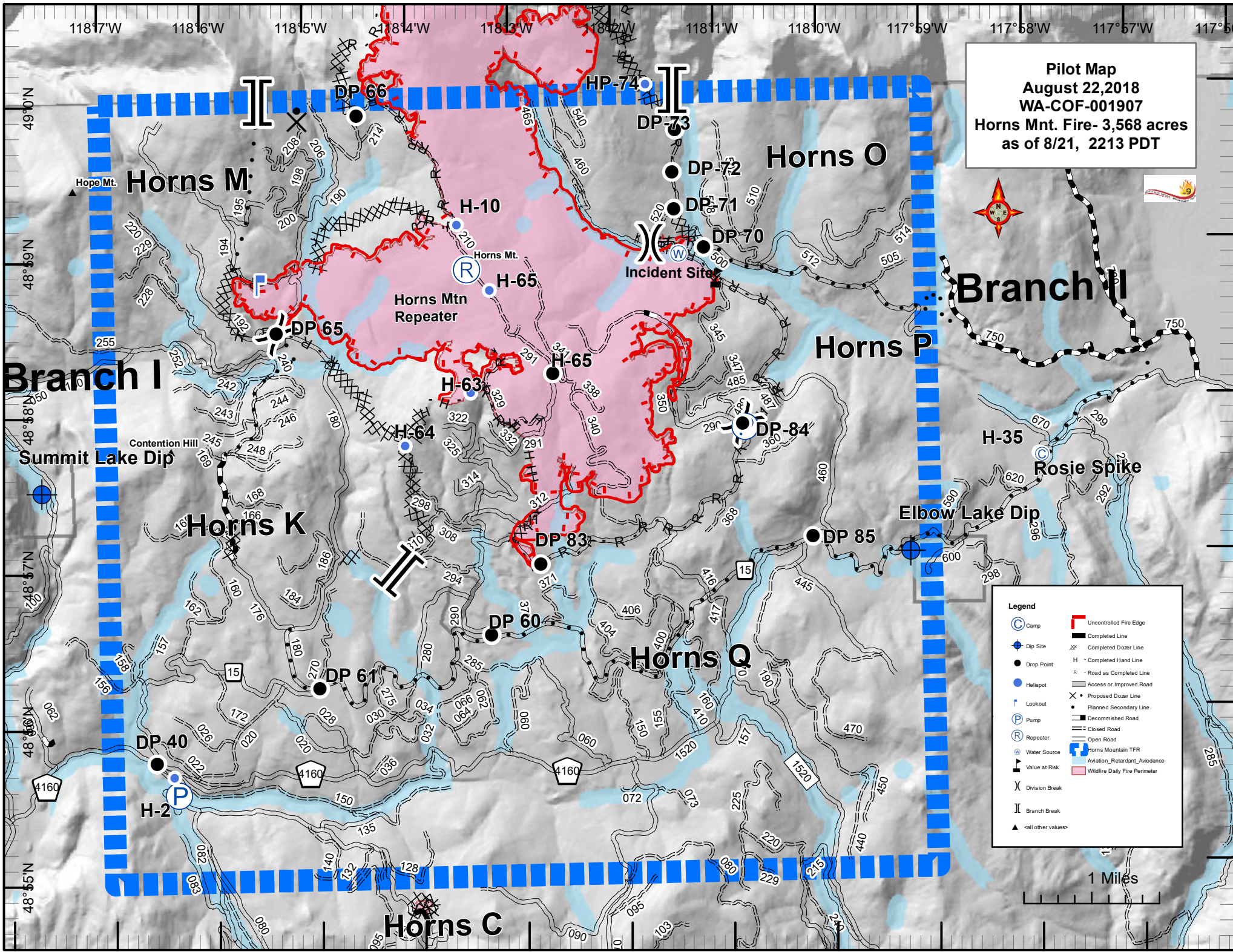


Pilot Map
August 22, 2018
WA-COF-001907
Horns Mt. Fire- 3,568 acres
as of 8/21, 2213 PDT



Legend

	Camp		Uncontrolled Fire Edge
	Dip Site		Completed Line
	Drop Point		Completed Dozer Line
	Helispot		Completed Hand Line
	Lookout		Road as Completed Line
	Pump		Access or Improved Road
	Repeater		Proposed Dozer Line
	Water Source		Planned Secondary Line
	Value at Risk		Decommissioned Road
	Division Break		Closed Road
	Branch Break		Open Road
	Horns Mountain TFR		Aviation Retardant Avoidance
	Wildfire Daily Fire Perimeter		Wildfire Daily Fire Perimeter
	<all other values>		

1 Miles

FeatureCat	Label	Latitude	Longitude
Camp	Horns Spike	N48° 58.329'	W118° 8.169'
Camp	Rosie Spike	N48° 57.625'	W117° 57.899'
Dip Site	Elbow Lake Dip	N48° 57.029'	W117° 59.201'
Dip Site	Summit Lake Dip	N48° 57.519'	W118° 7.636'
Drop Point	DP 1	N48° 57.515'	W118° 1.023'
Drop Point	DP 5	N48° 56.220'	W117° 52.747'
Drop Point	DP 40	N48° 55.768'	W118° 6.573'
Drop Point	DP 60	N48° 56.547'	W118° 3.297'
Drop Point	DP 61	N48° 56.228'	W118° 4.975'
Drop Point	DP 62	N48° 58.218'	W118° 2.638'
Drop Point	DP 65	N48° 58.486'	W118° 5.319'
Drop Point	DP 66	N48° 59.899'	W118° 4.493'
Drop Point	DP 70	N48° 59.005'	W118° 1.142'
Drop Point	DP 71	N48° 59.254'	W118° 1.422'
Drop Point	DP 72	N48° 59.491'	W118° 1.434'
Drop Point	DP 73	N48° 59.762'	W118° 1.397'
Drop Point	DP 83	N48° 56.995'	W118° 2.801'
Drop Point	DP 84	N48° 57.869'	W118° 0.805'
Drop Point	DP 85	N48° 57.132'	W118° 0.147'
Helibase		N48° 55.709'	W117° 46.732'
Helispot	H - 1	N48° 56.078'	W117° 52.818'
Helispot	H - 2	N48° 55.678'	W118° 6.407'
Helispot	H - 10	N48° 59.183'	W118° 3.543'
Helispot	H - 35	N48° 57.635'	W117° 57.93'
Helispot	H - 64	N48° 57.773'	W118° 4.092'
Helispot	H - 65	N48° 58.758'	W118° 3.236'
Helispot	H - 74	N49° 0.056'	W118° 1.671'
Repeater	Flagstaff	N48° 54.516'	W117° 52.123'
Repeater	Horns Mtn	N48° 58.898'	W118° 3.452'
Value at Risk	Incident Site	N48° 58.811'	W118° 1.023'