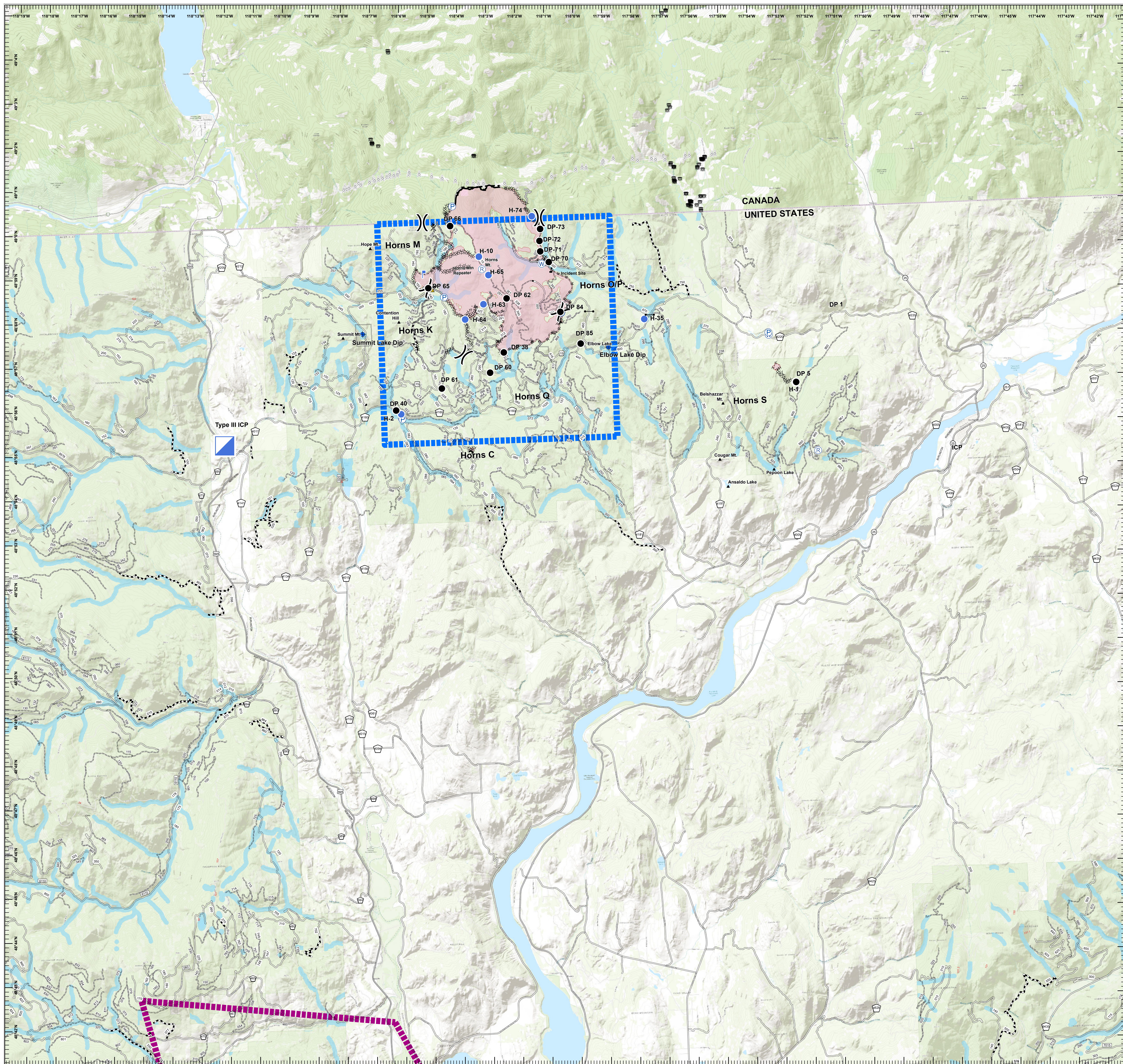


**Aviation Map  
August 27, 2018  
WA-COF-001907  
Horns Mountain Fire- 5,439 acres  
as of 8/26, 0730 PDT**



FeatureCat	Label	Latitude	Longitude
Camp	Horns Spike	N48° 58.329'	W118° 8.169'
Camp	Rosie Spike	N48° 57.625'	W117° 57.899'
Dip Site	Elbow Lake Dip	N48° 57.029'	W117° 59.201'
Dip Site	Summit Lake Dip	N48° 57.519'	W118° 7.636'
Drop Point	DP 1	N48° 57.515'	W118° 1.023'
Drop Point	DP 5	N48° 56.220'	W117° 52.747'
Drop Point	DP 40	N48° 55.768'	W118° 6.573'
Drop Point	DP 60	N48° 56.547'	W118° 3.297'
Drop Point	DP 61	N48° 56.228'	W118° 4.975'
Drop Point	DP 62	N48° 58.218'	W118° 2.638'
Drop Point	DP 65	N48° 58.486'	W118° 5.319'
Drop Point	DP 66	N48° 59.899'	W118° 4.493'
Drop Point	DP 70	N48° 59.005'	W118° 1.142'
Drop Point	DP 71	N48° 59.254'	W118° 1.422'
Drop Point	DP 72	N48° 59.491'	W118° 1.434'
Drop Point	DP 73	N48° 59.762'	W118° 1.397'
Drop Point	DP 83	N48° 56.995'	W118° 2.801'
Drop Point	DP 84	N48° 57.869'	W118° 0.805'
Drop Point	DP 85	N48° 57.132'	W118° 0.147'
Helibase		N48° 55.709'	W117° 46.732'
Helispot	H - 1	N48° 56.078'	W117° 52.818'
Helispot	H - 2	N48° 55.678'	W118° 6.407'
Helispot	H - 10	N48° 59.183'	W118° 3.543'
Helispot	H - 35	N48° 57.635'	W117° 57.93'
Helispot	H - 63	N48° 58.218'	W118° 2.638'
Helispot	H - 64	N48° 57.773'	W118° 4.092'
Helispot	H - 65	N48° 58.758'	W118° 3.236'
Helispot	H - 74	N49° 0.056'	W118° 1.671'
Repeater	Flagstaff	N48° 54.516'	W117° 52.123'
Repeater	Horns Mtn	N48° 58.898'	W118° 3.452'
Safety Zone		N48° 58.583'	W118° 5.212'
Value at Risk	Incident Site	N48° 58.811'	W118° 1.023'

Legend	
X	Closure
◆	Dip Site
●	Drop Point
→	Gate
●	Helispot
▣	Incident Command Post
⌵	Lookout
Ⓡ	Repeater
▲	Safety Zone
⊙	Spot Fire
Ⓜ	Water Source
⊘	Value at Risk
)	Division Break
====	Powerline
----	Pipeline
—	Roads
▭	Retardant Avoid
▭	Wildfire Daily Fire Perimeter
▭	Campground
▭	Horns Mountain TFR
▭	Boyd TFR

