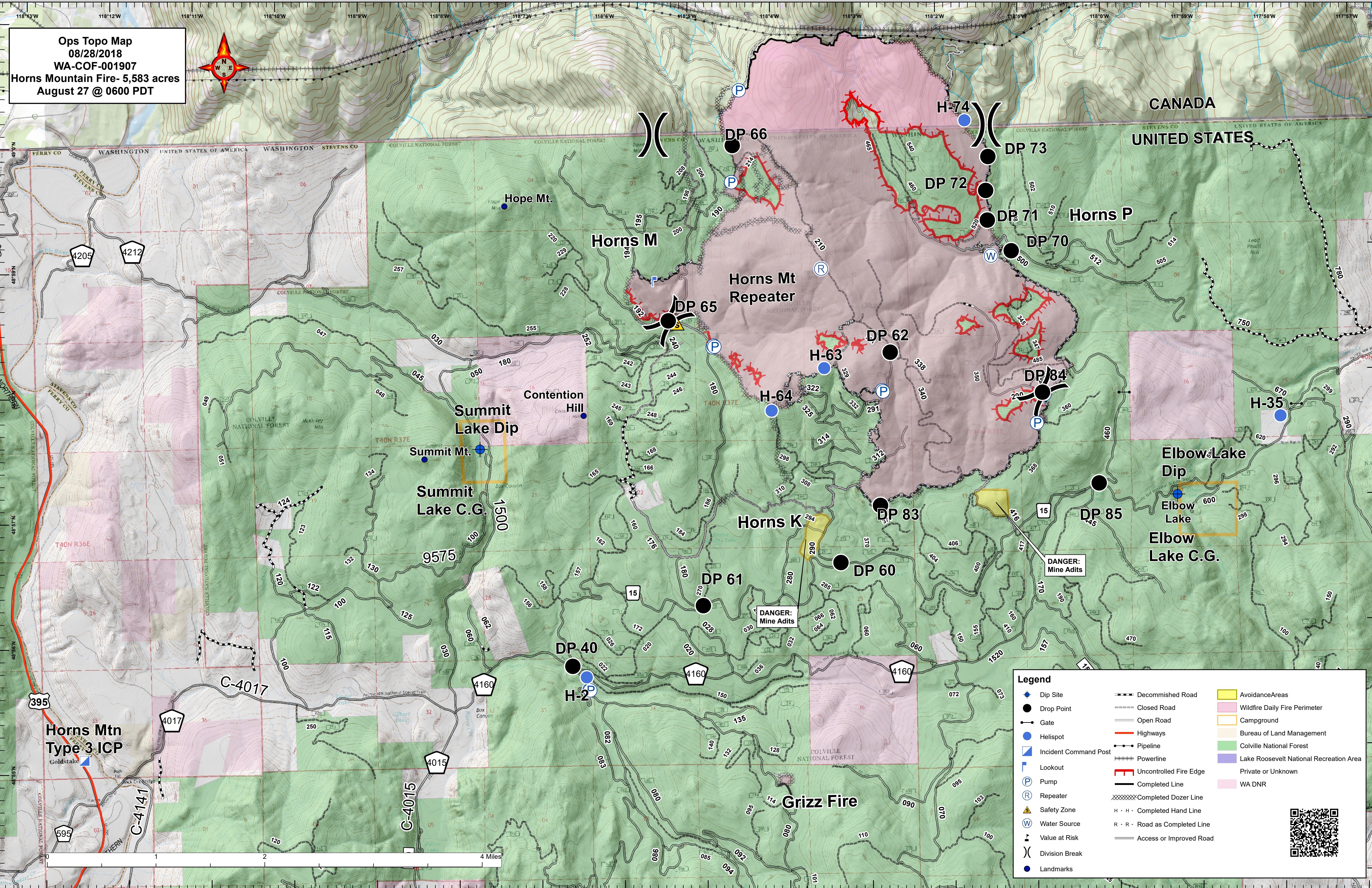


Ops Topo Map
 08/28/2018
 WA-COF-001907
 Horns Mountain Fire- 5,583 acres
 August 27 @ 0600 PDT



Legend

Dip Site	Decommissioned Road	Avoidance Areas
Drop Point	Closed Road	Wildfire Daily Fire Perimeter
Gate	Open Road	Campground
Helispot	Highways	Bureau of Land Management
Incident Command Post	Pipeline	Colville National Forest
Lookout	Powerline	Lake Roosevelt National Recreation Area
Pump	Uncontrolled Fire Edge	Private or Unknown
Repeater	Completed Line	WA DNR
Safety Zone	Completed Dozer Line	
Water Source	H - H - Completed Hand Line	
Value at Risk	R - R - Road as Completed Line	
Division Break	Access or Improved Road	
Landmarks		

