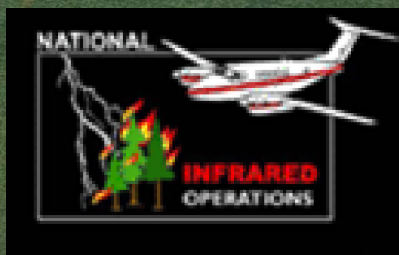


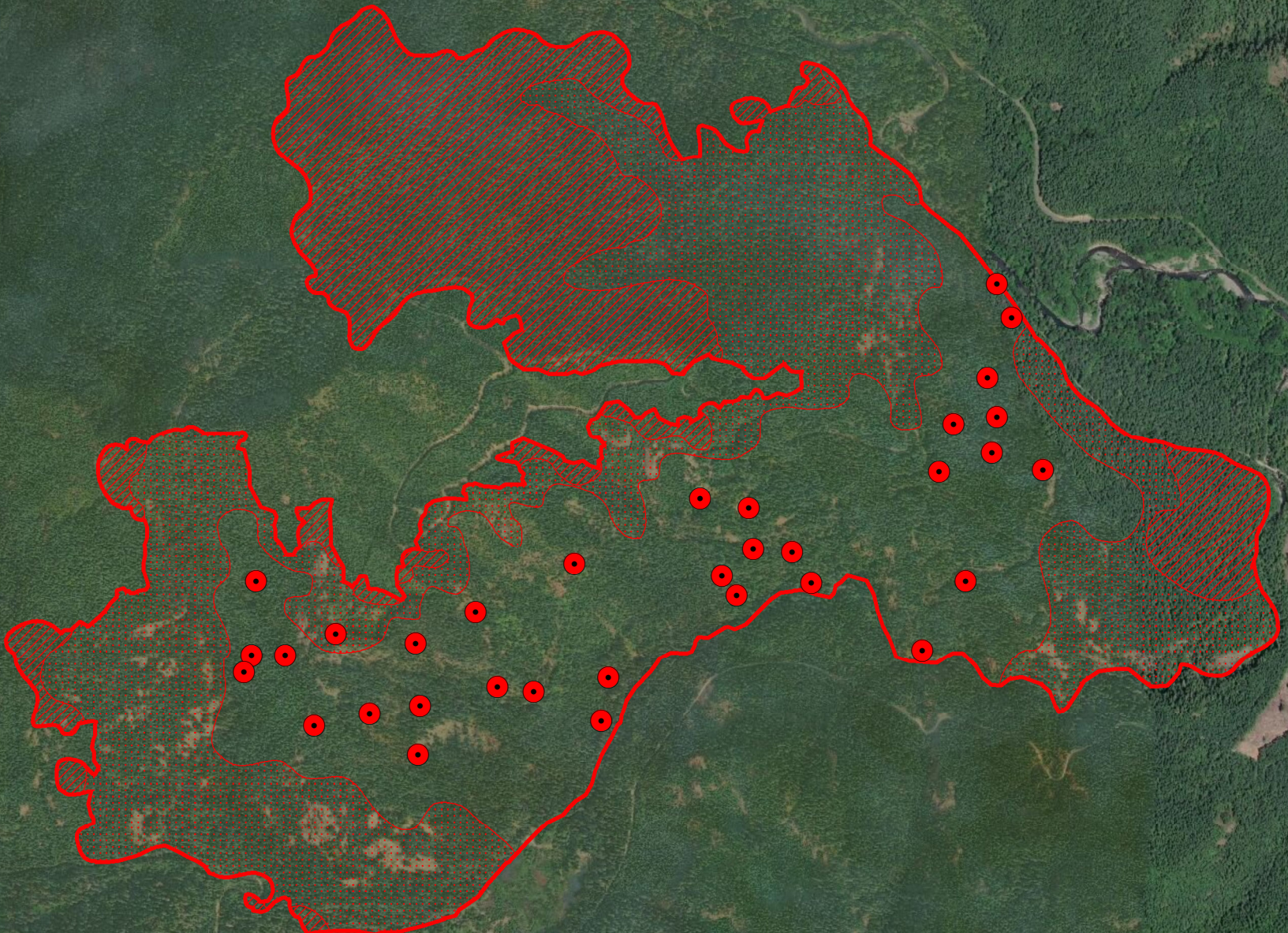
123°10'30"W 123°10'W 123°9'30"W 123°9'W 123°8'30"W 123°8'W 123°7'30"W 123°7'W 123°6'30"W 123°6'W 123°5'30"W




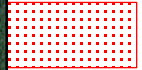


Maple Fire
IR Map 0811
WA-OLF-000207
IR 20180811-0114pdt
IR acres 1,245

47°36'N
47°35'30"N
47°35'N
47°34'30"N
47°34'N

47°36'N
47°35'30"N
47°35'N
47°34'30"N
47°34'N



Legend

-  IsolatedHeat
-  ScatteredHeat
-  IntenseHeat
-  HeatPerimeter

N

NAD83 1:18,000

IRIN Ken Marchand

0 0.25 0.5 1 Miles

123°10'30"W 123°10'W 123°9'30"W 123°9'W 123°8'30"W 123°8'W 123°7'30"W 123°7'W 123°6'30"W 123°6'W 123°5'30"W