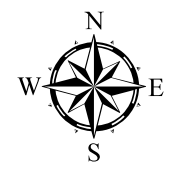





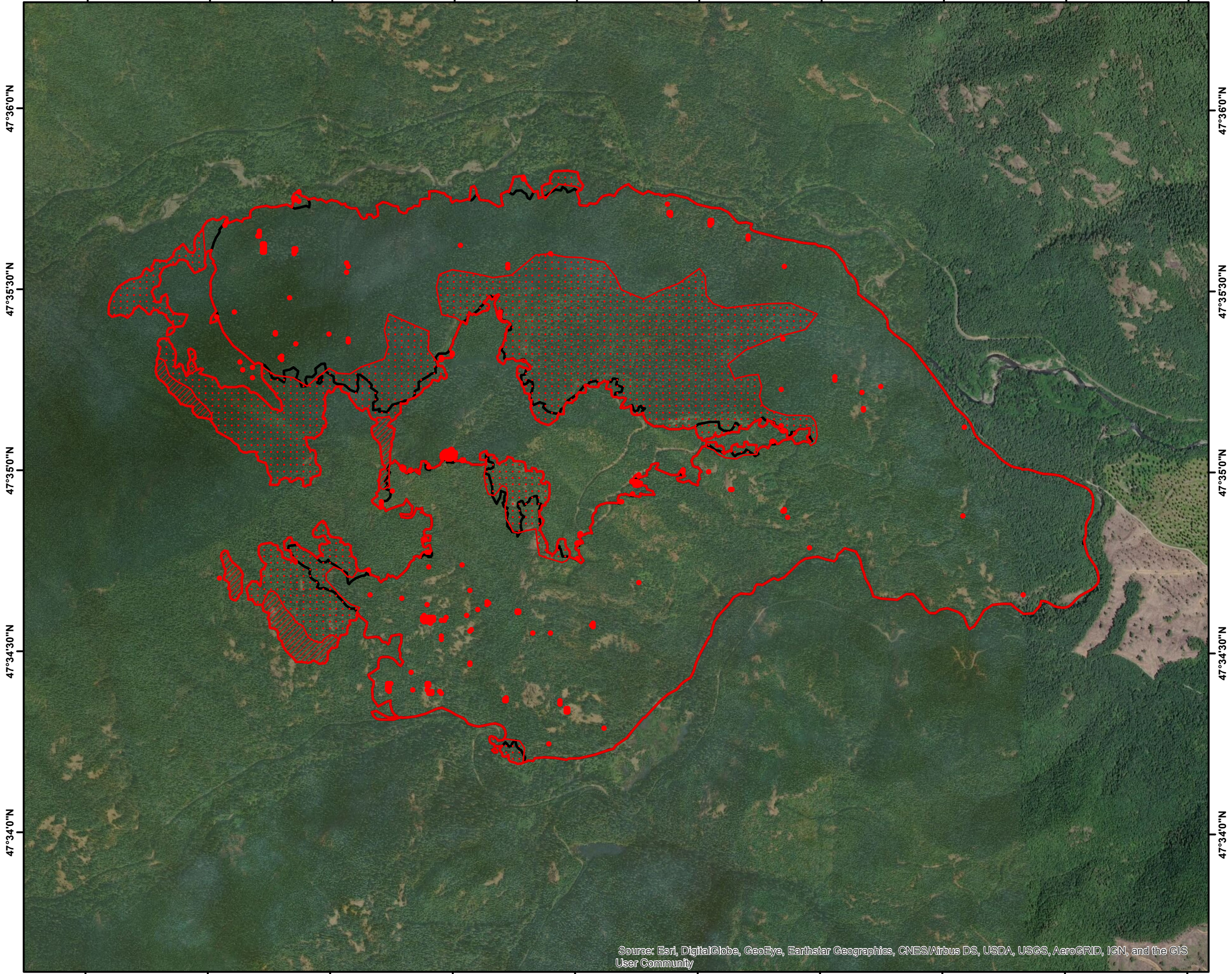


123°10'30"W 123°10'0"W 123°9'30"W 123°9'0"W 123°8'30"W 123°8'0"W 123°7'30"W 123°7'0"W 123°6'30"W 123°6'0"W

Maple WA-OLF-000207 Infrared Heat Sources



-  Heat Perimeter
 -  Intense Heat
 -  Scattered Heat
 -  Isolated Heat Sources
 -  Previous Heat Perimeter
- NAD 1983 UTM Zone 12N



Source: Esri, DigitalGlobe, GeoEye, Earthstar Geographics, CNES/Airbus DS, USDA, USGS, AeroGRID, IGN, and the GIS User Community

123°10'30"W 123°10'0"W 123°9'30"W 123°9'0"W 123°8'30"W 123°8'0"W 123°7'30"W 123°7'0"W 123°6'30"W 123°6'0"W

47°36'0"N
47°35'30"N
47°35'0"N
47°34'30"N
47°34'0"N



IR Interpreter: Buck Buchanan
Interpreted Acres: 1,879
Date: 08/21/2018
Time Imagery Received: 0000 hrs. MDT