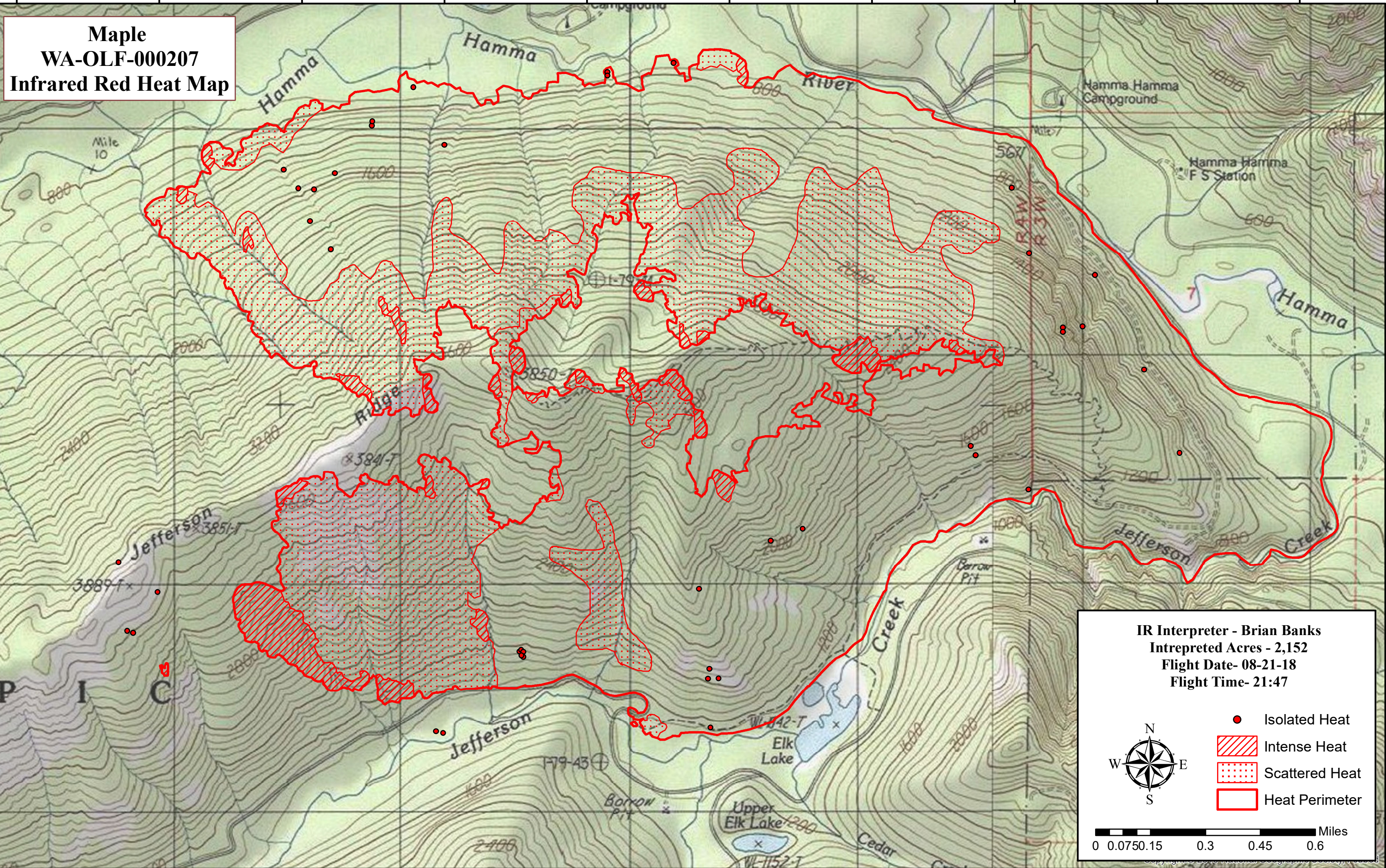


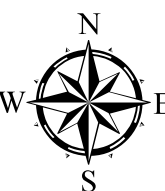
123°11'0"W 123°10'30"W 123°10'0"W 123°9'30"W 123°9'0"W 123°8'30"W 123°8'0"W 123°7'30"W 123°7'0"W 123°6'30"W

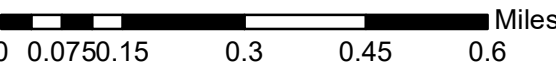


**Maple**  
**WA-OLF-000207**  
**Infrared Red Heat Map**

**IR Interpreter - Brian Banks**  
**Intrepreted Acres - 2,152**  
**Flight Date- 08-21-18**  
**Flight Time- 21:47**

- Isolated Heat
- / / / / Intense Heat
- . . . . . Scattered Heat
- Heat Perimeter





123°11'0"W 123°10'30"W 123°10'0"W 123°9'30"W 123°9'0"W 123°8'30"W 123°8'0"W 123°7'30"W 123°7'0"W 123°6'30"W