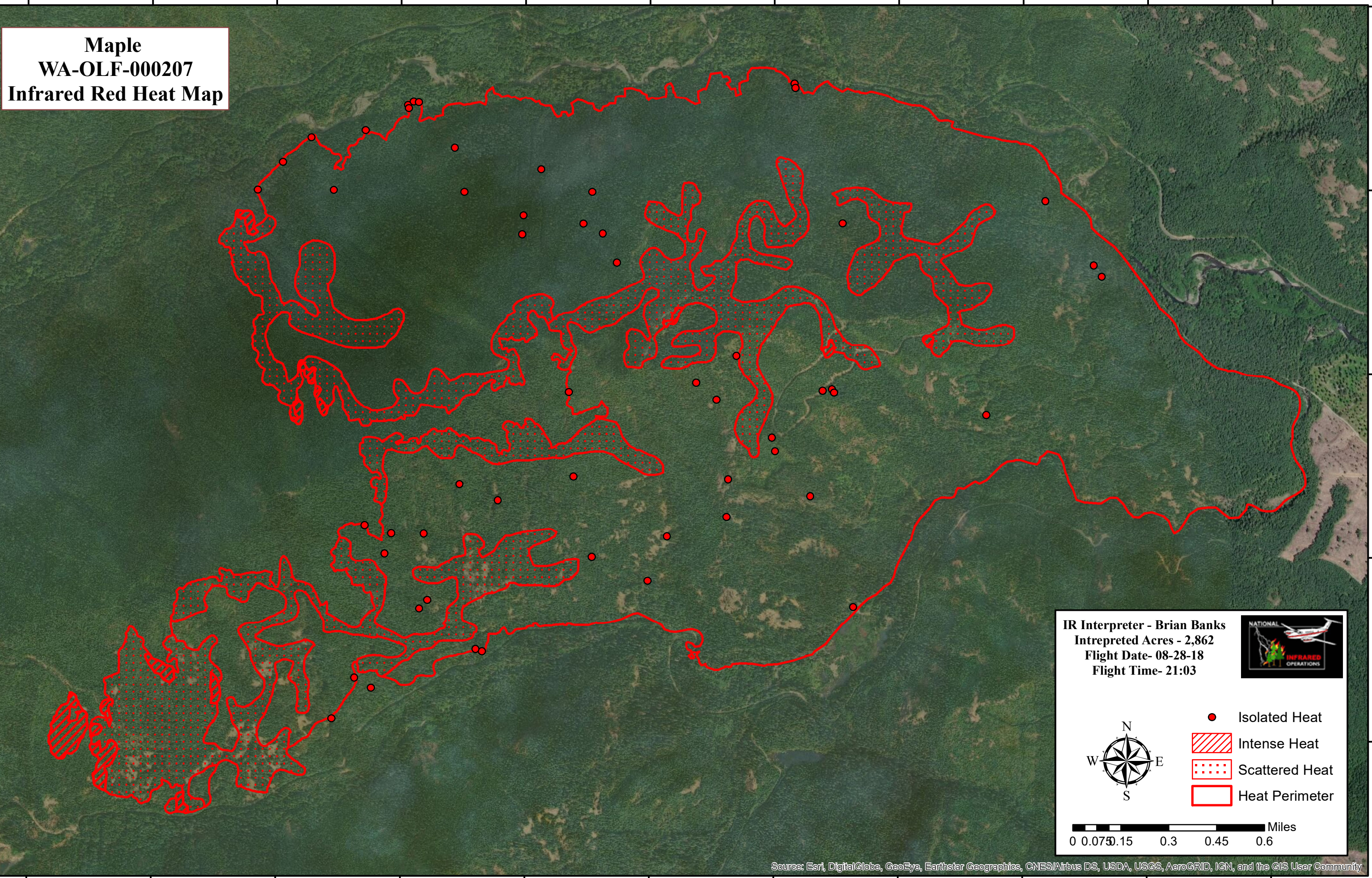


123°11'30"W 123°11'0"W 123°10'30"W 123°10'0"W 123°9'30"W 123°9'0"W 123°8'30"W 123°8'0"W 123°7'30"W 123°7'0"W 123°6'30"W



Maple
WA-OLF-000207
Infrared Red Heat Map

47°35'30"N

47°35'0"N

47°34'30"N

47°34'0"N

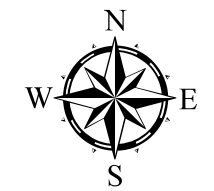
47°35'30"N





47°35'0"N

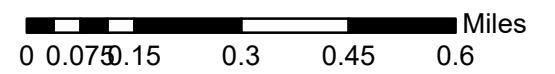
47°34'30"N

47°34'0"N

IR Interpreter - Brian Banks
Intepreted Acres - 2,862
Flight Date- 08-28-18
Flight Time- 21:03



-  Isolated Heat
-  Intense Heat
-  Scattered Heat
-  Heat Perimeter



Source: Esri, DigitalGlobe, GeoEye, Earthstar Geographics, CNES/Airbus DS, USDA, USGS, AeroGRID, IGN, and the GIS User Community

123°11'30"W 123°11'0"W 123°10'30"W 123°10'0"W 123°9'30"W 123°9'0"W 123°8'30"W 123°8'0"W 123°7'30"W 123°7'0"W 123°6'30"W