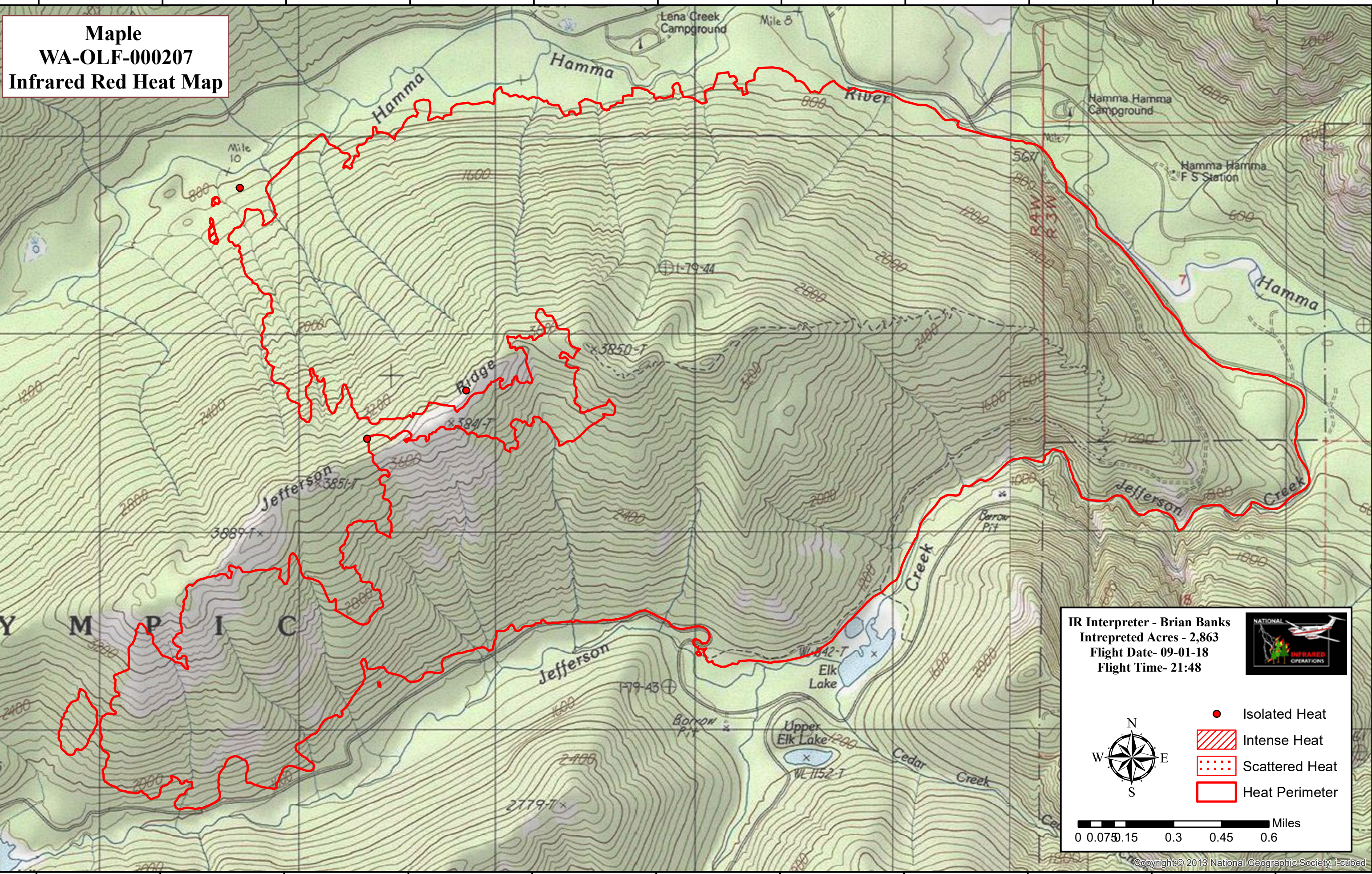


123°11'30"W 123°11'0"W 123°10'30"W 123°10'0"W 123°9'30"W 123°9'0"W 123°8'30"W 123°8'0"W 123°7'30"W 123°7'0"W 123°6'30"W

Maple WA-OLF-000207 Infrared Red Heat Map



47°35'30"N

47°35'0"N

47°34'30"N

47°34'0"N

47°35'30"N


47°35'0"N

47°34'30"N


47°34'0"N

123°11'30"W 123°11'0"W 123°10'30"W 123°10'0"W 123°9'30"W 123°9'0"W 123°8'30"W 123°8'0"W 123°7'30"W 123°7'0"W 123°6'30"W

IR Interpreter - Brian Banks
 Intrepreted Acres - 2,863
 Flight Date- 09-01-18
 Flight Time- 21:48



● Isolated Heat
 ▨ Intense Heat
 ▤ Scattered Heat
 □ Heat Perimeter



0 0.075 0.15 0.3 0.45 0.6 Miles