

120°25'0"W

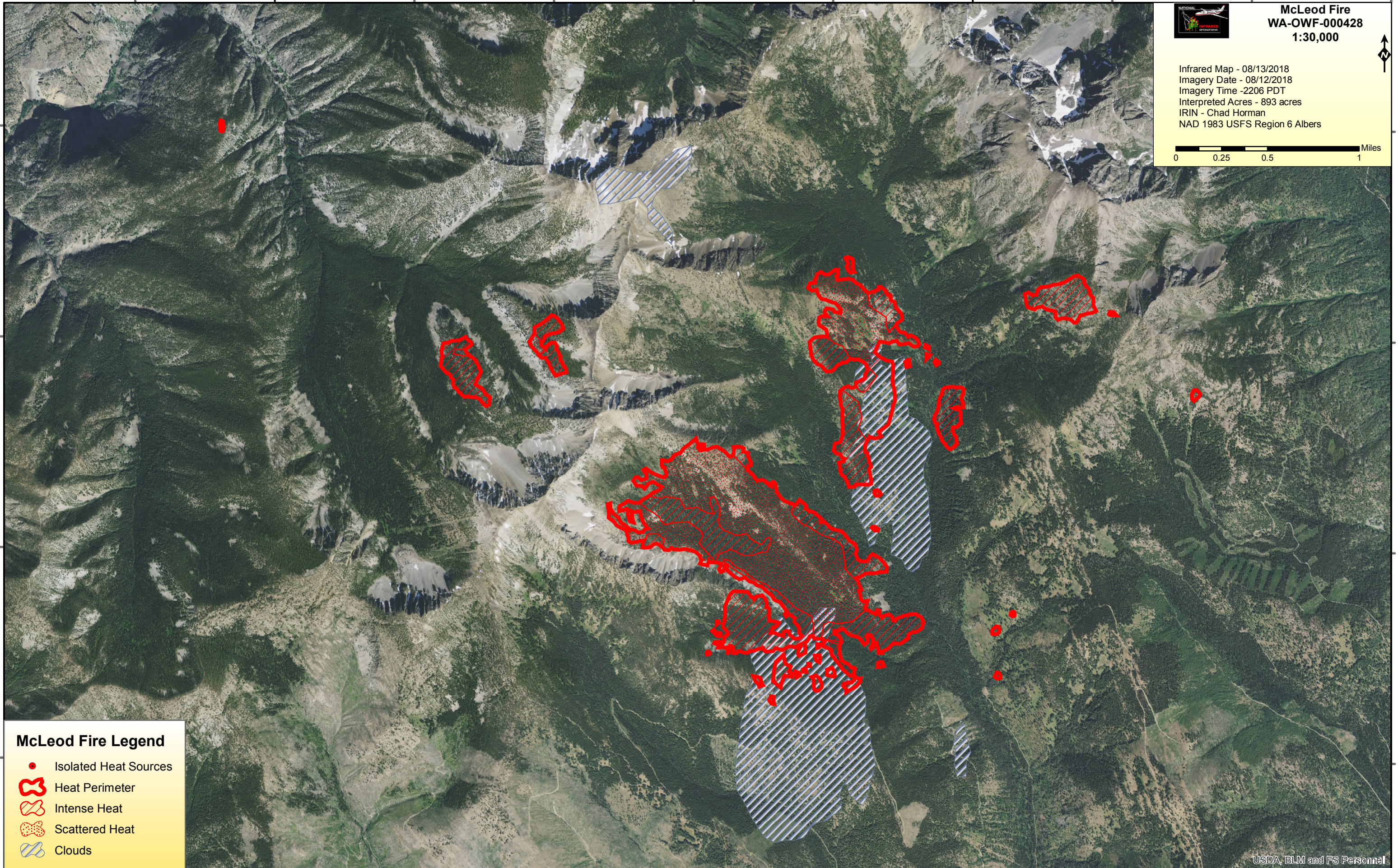
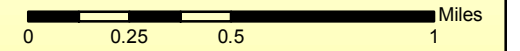
120°20'0"W








McLeod Fire
WA-OWF-000428
1:30,000



Infrared Map - 08/13/2018
Imagery Date - 08/12/2018
Imagery Time - 2206 PDT
Interpreted Acres - 893 acres
IRIN - Chad Horman
NAD 1983 USFS Region 6 Albers



McLeod Fire Legend

-  Isolated Heat Sources
-  Heat Perimeter
-  Intense Heat
-  Scattered Heat
-  Clouds

120°25'0"W

120°20'0"W