

120°25'0"W

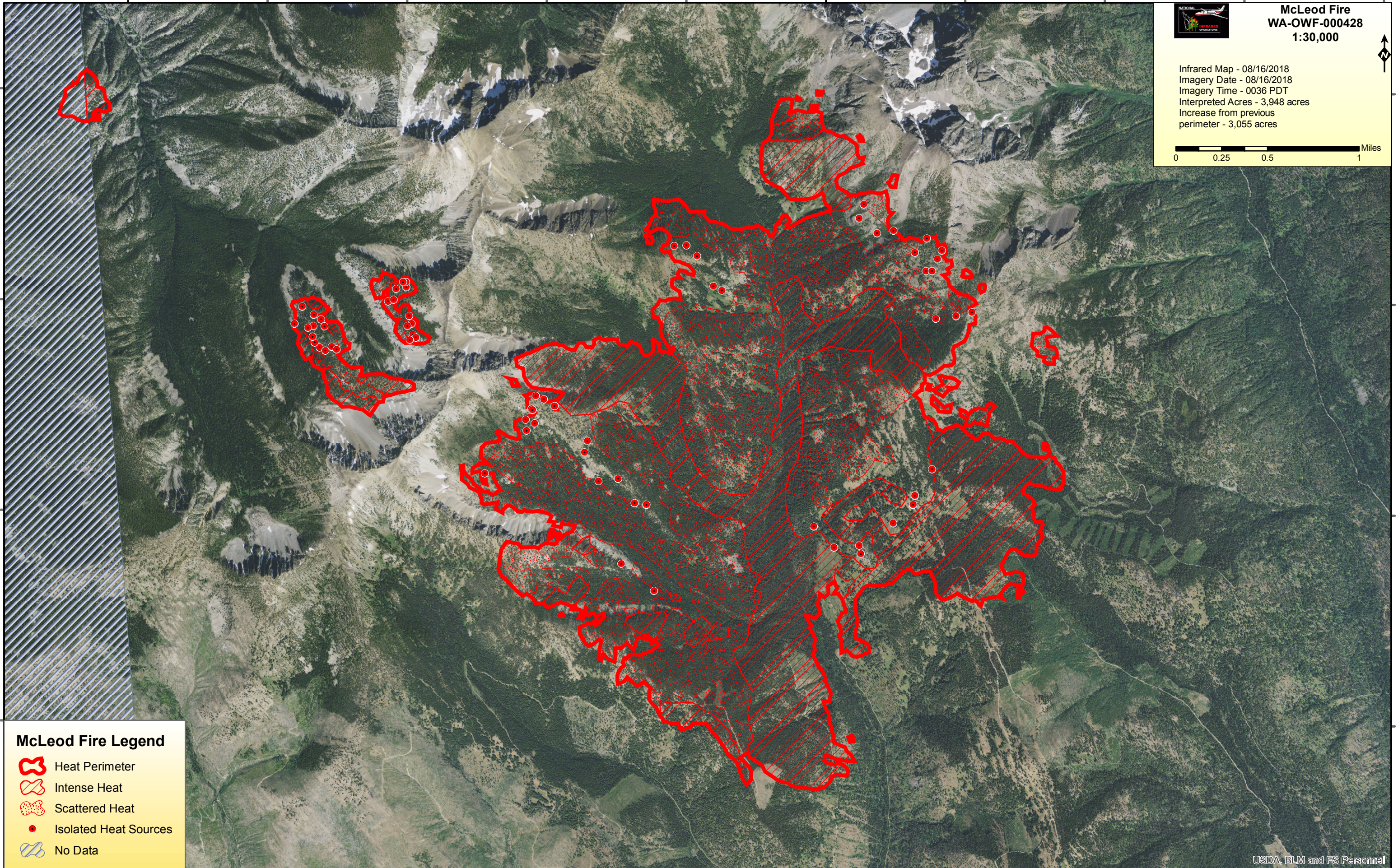
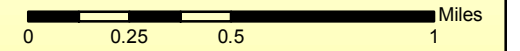
120°20'0"W








McLeod Fire
WA-OWF-000428
1:30,000



Infrared Map - 08/16/2018
Imagery Date - 08/16/2018
Imagery Time - 0036 PDT
Interpreted Acres - 3,948 acres
Increase from previous
perimeter - 3,055 acres



McLeod Fire Legend

-  Heat Perimeter
-  Intense Heat
-  Scattered Heat
-  Isolated Heat Sources
-  No Data

120°25'0"W

120°20'0"W