

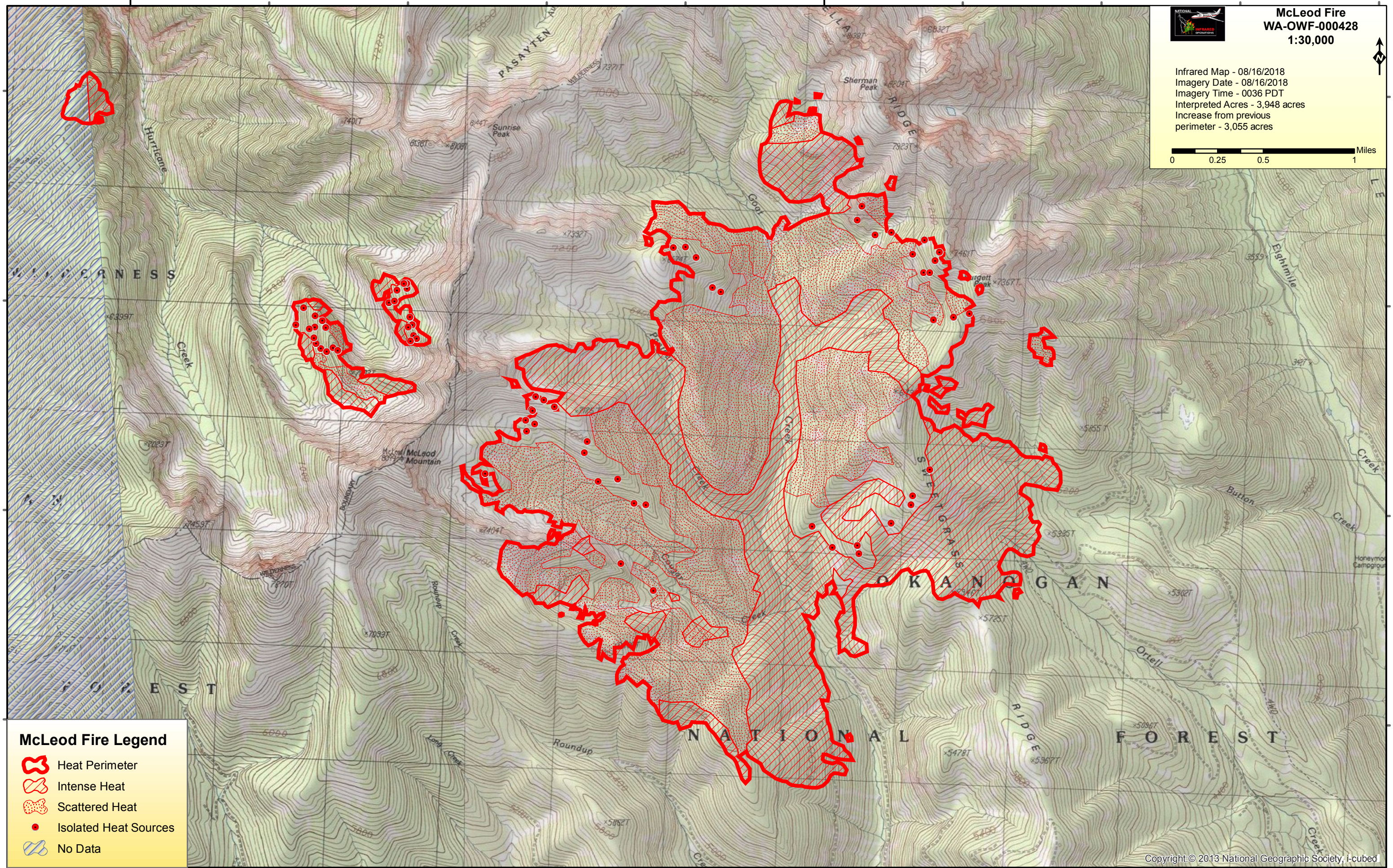
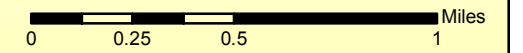
120°25'0"W

120°20'0"W



McLeod Fire
WA-OWF-000428
1:30,000

Infrared Map - 08/16/2018
Imagery Date - 08/16/2018
Imagery Time - 0036 PDT
Interpreted Acres - 3,948 acres
Increase from previous
perimeter - 3,055 acres



McLeod Fire Legend

- Heat Perimeter
- Intense Heat
- Scattered Heat
- Isolated Heat Sources
- No Data

120°25'0"W

120°20'0"W