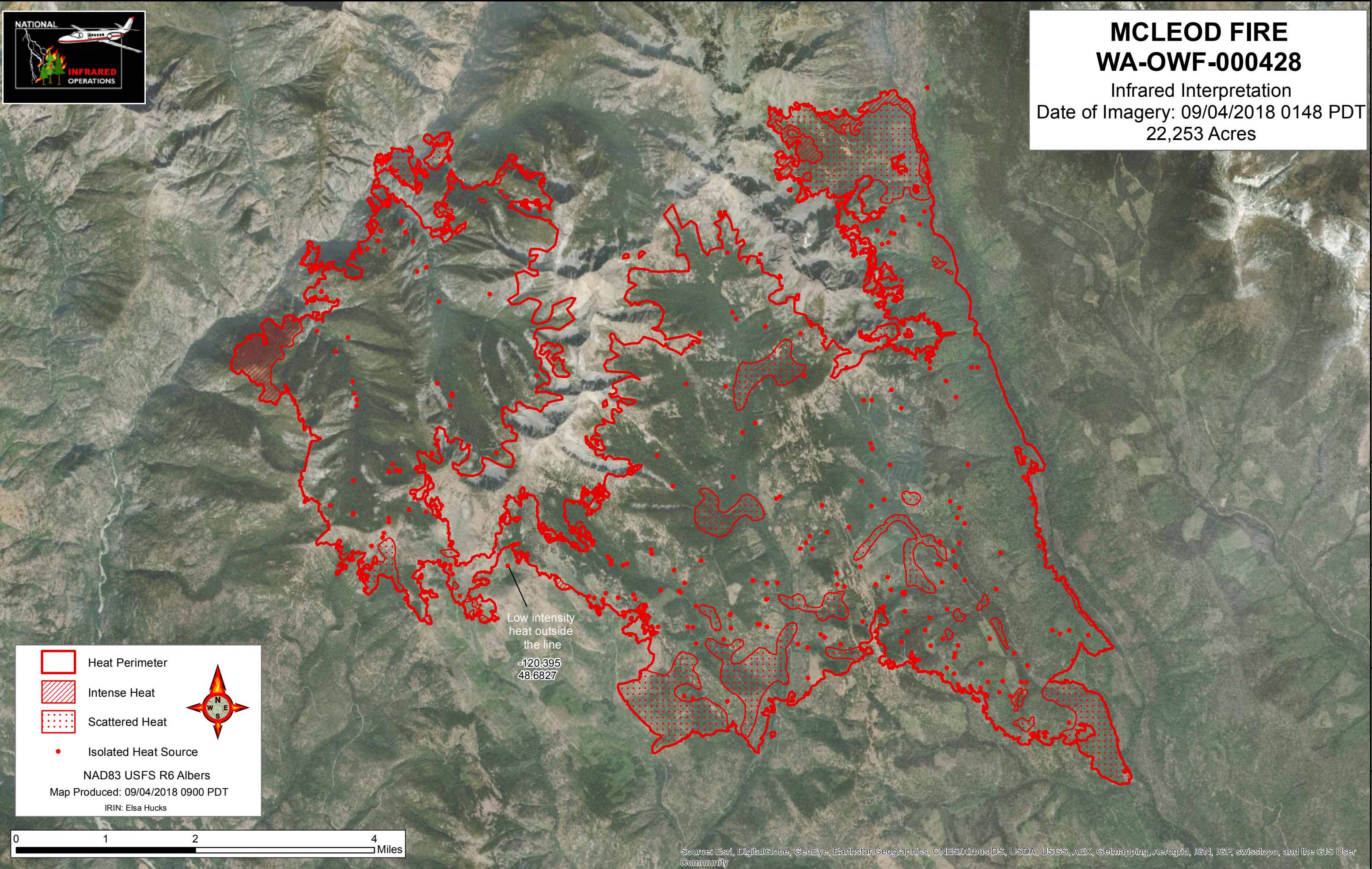






120°31'0"W 120°30'0"W 120°29'0"W 120°28'0"W 120°27'0"W 120°26'0"W 120°25'0"W 120°24'0"W 120°23'0"W 120°22'0"W 120°21'0"W 120°20'0"W 120°19'0"W 120°18'0"W 120°17'0"W 120°16'0"W 120°15'0"W 120°14'0"W 120°13'0"W 120°12'0"W

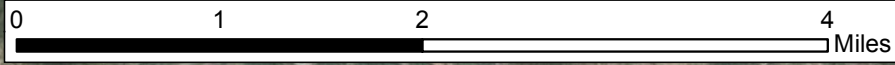


MCLEOD FIRE
WA-OWF-000428
Infrared Interpretation
Date of Imagery: 09/04/2018 0148 PDT
22,253 Acres

Low intensity
heat outside
the line
-120.395
48.6827

 Heat Perimeter
 Intense Heat
 Scattered Heat
 Isolated Heat Source

NAD83 USFS R6 Albers
Map Produced: 09/04/2018 0900 PDT
IRIN: Elsa Hucks



Source: Esri, DigitalGlobe, GeoEye, Earthstar Geographics, CNES/Airbus DS, USDA, USGS, AEX, Getmapping, Aerogrid, IGN, IGP, swisstopo, and the GIS User Community

48°46'0"N
48°45'0"N
48°44'0"N
48°43'0"N
48°42'0"N
48°41'0"N
48°40'0"N
48°39'0"N
48°38'0"N

48°46'0"N
48°45'0"N
48°44'0"N
48°43'0"N
48°42'0"N
48°41'0"N
48°40'0"N
48°39'0"N
48°38'0"N

120°31'0"W 120°30'0"W 120°29'0"W 120°28'0"W 120°27'0"W 120°26'0"W 120°25'0"W 120°24'0"W 120°23'0"W 120°22'0"W 120°21'0"W 120°20'0"W 120°19'0"W 120°18'0"W 120°17'0"W 120°16'0"W 120°15'0"W 120°14'0"W 120°13'0"W 120°12'0"W