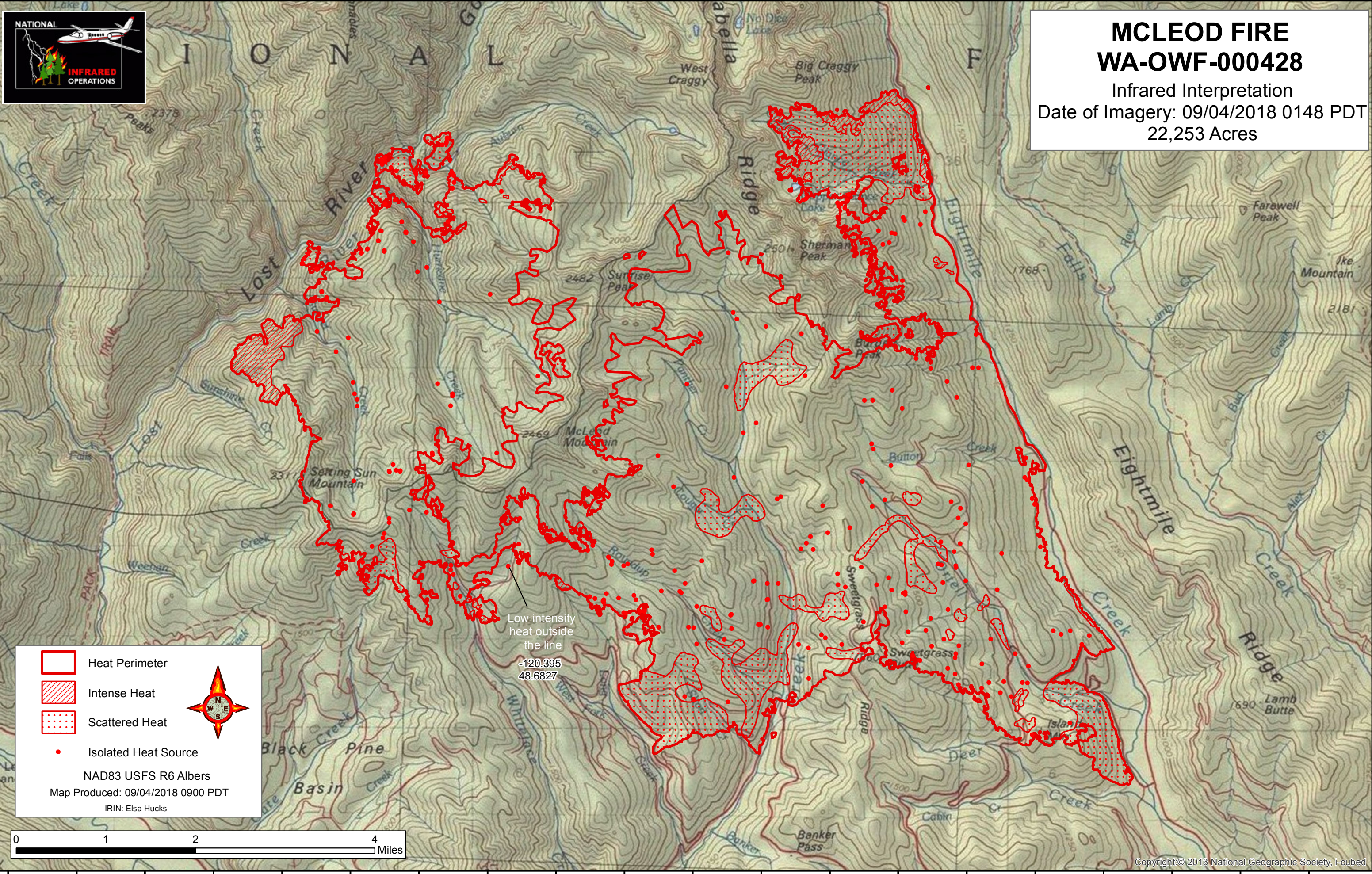







120°31'0"W 120°30'0"W 120°29'0"W 120°28'0"W 120°27'0"W 120°26'0"W 120°25'0"W 120°24'0"W 120°23'0"W 120°22'0"W 120°21'0"W 120°20'0"W 120°19'0"W 120°18'0"W 120°17'0"W 120°16'0"W 120°15'0"W 120°14'0"W 120°13'0"W 120°12'0"W



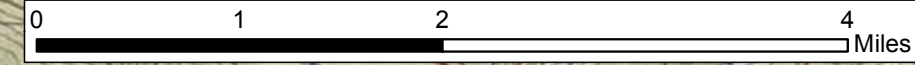
MCLEOD FIRE
WA-OWF-000428
Infrared Interpretation
Date of Imagery: 09/04/2018 0148 PDT
22,253 Acres



 Heat Perimeter
 Intense Heat
 Scattered Heat
 Isolated Heat Source


NAD83 USFS R6 Albers
Map Produced: 09/04/2018 0900 PDT
IRIN: Elsa Hucks

Low intensity heat outside the line
-120.395
48.6827



48°46'0"N
48°45'0"N
48°44'0"N
48°43'0"N
48°42'0"N
48°41'0"N
48°40'0"N
48°39'0"N
48°38'0"N

48°46'0"N
48°45'0"N
48°44'0"N
48°43'0"N
48°42'0"N
48°41'0"N
48°40'0"N
48°39'0"N
48°38'0"N