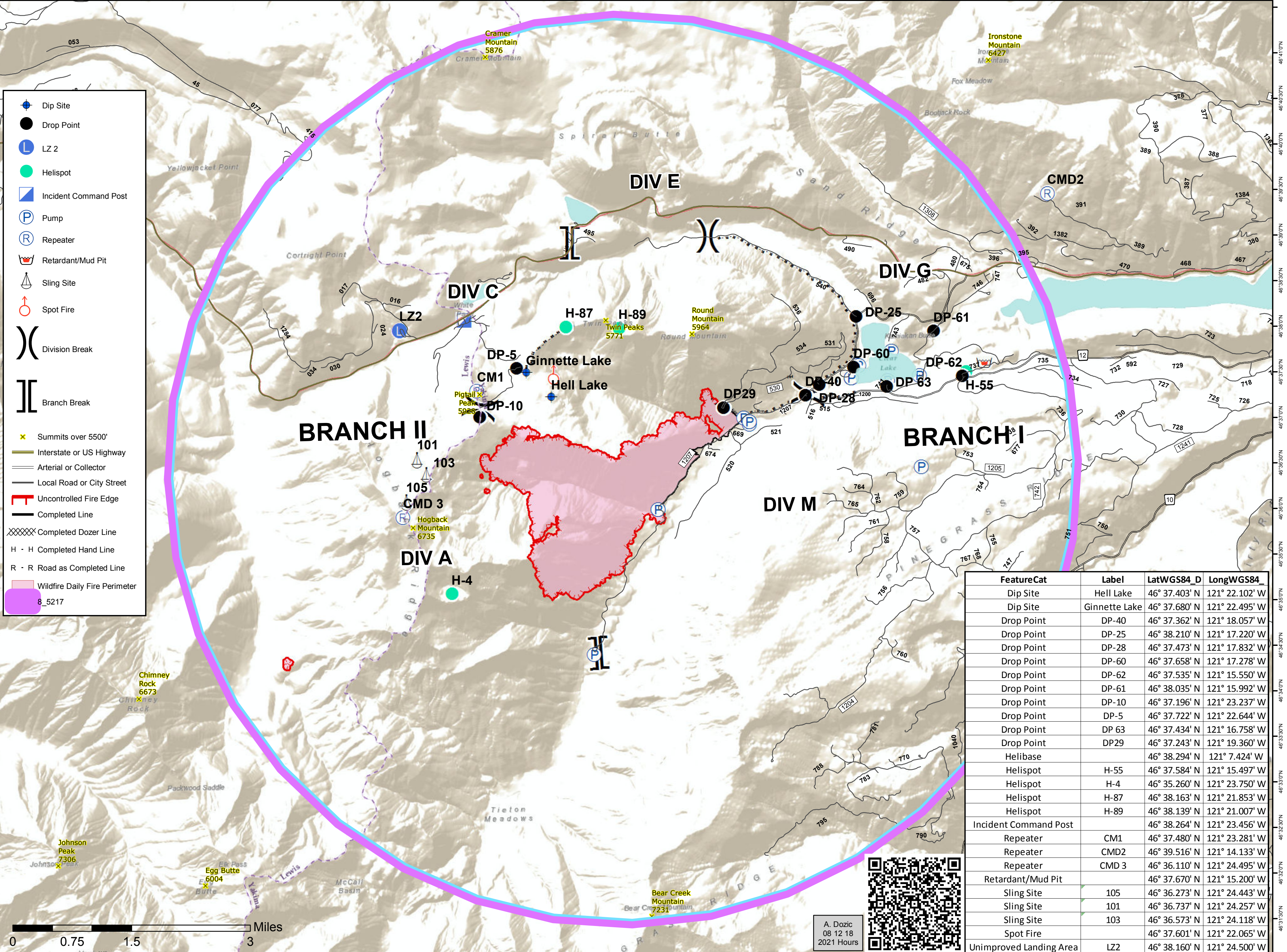


121°30'0"W 121°30'0"W 121°29'30"W 121°29'0"W 121°28'30"W 121°28'0"W 121°27'30"W 121°27'0"W 121°26'30"W 121°26'0"W 121°25'30"W 121°25'0"W 121°24'30"W 121°24'0"W 121°23'30"W 121°23'0"W 121°22'30"W 121°22'0"W 121°21'30"W 121°21'0"W 121°20'30"W 121°20'0"W 121°19'30"W 121°19'0"W 121°18'30"W 121°18'0"W 121°17'30"W 121°17'0"W 121°16'30"W 121°16'0"W 121°15'30"W 121°15'0"W 121°14'30"W 121°14'0"W 121°13'30"W 121°13'0"W 121°12'30"W 121°12'0"W 121°11'30"W 121°11'0"W 121°10'30"W



FeatureCat	Label	LatWGS84_D	LongWGS84_
Dip Site	Hell Lake	46° 37.403' N	121° 22.102' W
Dip Site	Ginnette Lake	46° 37.680' N	121° 22.495' W
Drop Point	DP-40	46° 37.362' N	121° 18.057' W
Drop Point	DP-25	46° 38.210' N	121° 17.220' W
Drop Point	DP-28	46° 37.473' N	121° 17.832' W
Drop Point	DP-60	46° 37.658' N	121° 17.278' W
Drop Point	DP-62	46° 37.535' N	121° 15.550' W
Drop Point	DP-61	46° 38.035' N	121° 15.992' W
Drop Point	DP-10	46° 37.196' N	121° 23.237' W
Drop Point	DP-5	46° 37.722' N	121° 22.644' W
Drop Point	DP 63	46° 37.434' N	121° 16.758' W
Drop Point	DP29	46° 37.243' N	121° 19.360' W
Helibase		46° 38.294' N	121° 7.424' W
Helispot	H-55	46° 37.584' N	121° 15.497' W
Helispot	H-4	46° 35.260' N	121° 23.750' W
Helispot	H-87	46° 38.163' N	121° 21.853' W
Helispot	H-89	46° 38.139' N	121° 21.007' W
Incident Command Post		46° 38.264' N	121° 23.456' W
Repeater	CM1	46° 37.480' N	121° 23.281' W
Repeater	CMD2	46° 39.516' N	121° 14.133' W
Repeater	CMD 3	46° 36.110' N	121° 24.495' W
Retardant/Mud Pit		46° 37.670' N	121° 15.200' W
Sling Site	105	46° 36.273' N	121° 24.443' W
Sling Site	101	46° 36.737' N	121° 24.257' W
Sling Site	103	46° 36.573' N	121° 24.118' W
Spot Fire		46° 37.601' N	121° 22.065' W
Unimproved Landing Area	LZ2	46° 38.160' N	121° 24.500' W

A. Dozic
08 12 18
2021 Hours

