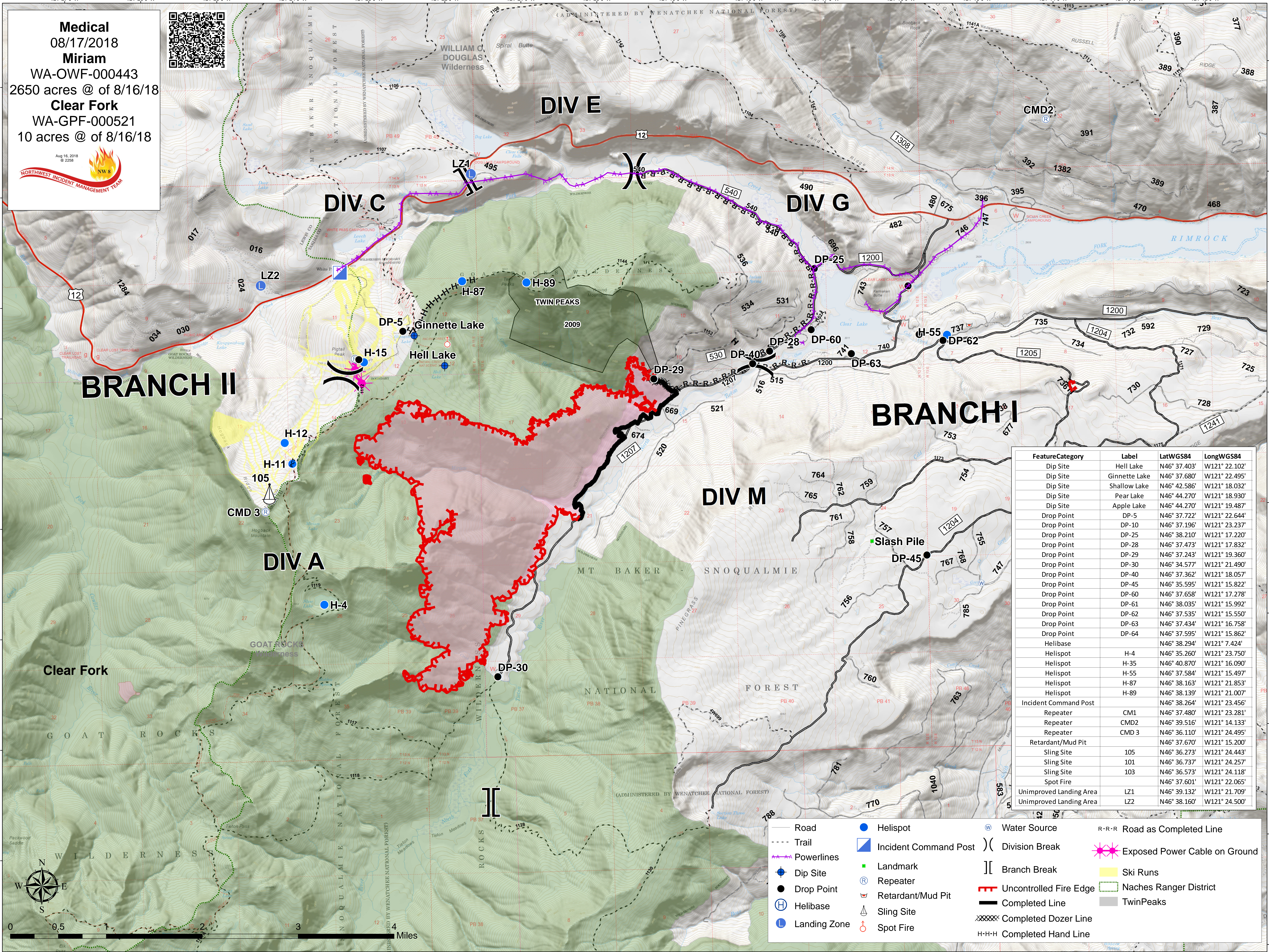


**Medical**  
 08/17/2018  
**Miriam**  
 WA-OWF-000443  
 2650 acres @ of 8/16/18  
**Clear Fork**  
 WA-GPF-000521  
 10 acres @ of 8/16/18



FeatureCategory	Label	LatWGS84	LongWGS84
Dip Site	Hell Lake	N46° 37.403'	W121° 22.102'
Dip Site	Ginnette Lake	N46° 37.680'	W121° 22.495'
Dip Site	Shallow Lake	N46° 42.586'	W121° 18.032'
Dip Site	Pear Lake	N46° 44.270'	W121° 18.930'
Dip Site	Apple Lake	N46° 44.270'	W121° 19.487'
Drop Point	DP-5	N46° 37.722'	W121° 22.644'
Drop Point	DP-10	N46° 37.196'	W121° 23.237'
Drop Point	DP-25	N46° 38.210'	W121° 17.220'
Drop Point	DP-28	N46° 37.473'	W121° 17.832'
Drop Point	DP-29	N46° 37.243'	W121° 19.360'
Drop Point	DP-30	N46° 34.577'	W121° 21.490'
Drop Point	DP-40	N46° 37.362'	W121° 18.057'
Drop Point	DP-45	N46° 35.595'	W121° 15.822'
Drop Point	DP-60	N46° 37.658'	W121° 17.278'
Drop Point	DP-61	N46° 38.035'	W121° 15.992'
Drop Point	DP-62	N46° 37.535'	W121° 15.550'
Drop Point	DP-63	N46° 37.434'	W121° 16.758'
Drop Point	DP-64	N46° 37.595'	W121° 15.862'
Helibase		N46° 38.294'	W121° 7.424'
Helispot	H-4	N46° 35.260'	W121° 23.750'
Helispot	H-35	N46° 40.870'	W121° 16.090'
Helispot	H-55	N46° 37.584'	W121° 15.497'
Helispot	H-87	N46° 38.163'	W121° 21.853'
Helispot	H-89	N46° 38.139'	W121° 21.007'
Incident Command Post		N46° 38.264'	W121° 23.456'
Repeater	CM1	N46° 37.480'	W121° 23.281'
Repeater	CMD2	N46° 39.516'	W121° 14.133'
Repeater	CMD 3	N46° 36.110'	W121° 24.495'
Retardant/Mud Pit		N46° 37.670'	W121° 15.200'
Sling Site	105	N46° 36.273'	W121° 24.443'
Sling Site	101	N46° 36.737'	W121° 24.257'
Sling Site	103	N46° 36.573'	W121° 24.118'
Spot Fire		N46° 37.601'	W121° 22.065'
Unimproved Landing Area	LZ1	N46° 39.132'	W121° 21.709'
Unimproved Landing Area	LZ2	N46° 38.160'	W121° 24.500'

- Road
- - - Trail
- Powerlines
- Dip Site
- Drop Point
- ⊕ Helibase
- Landing Zone
- Helispot
- ▣ Incident Command Post
- Landmark
- ⊕ Repeater
- ⊕ Retardant/Mud Pit
- ⊕ Sling Site
- ⊕ Spot Fire
- ⊕ Water Source
- ) Division Break
- || Branch Break
- ⊕ Exposed Power Cable on Ground
- Ski Runs
- ▣ Naches Ranger District
- ▣ TwinPeaks
- Uncontrolled Fire Edge
- Completed Line
- ⊕ Completed Dozer Line
- Completed Hand Line
- R-R-R Road as Completed Line

