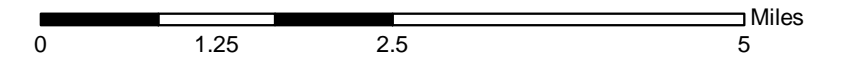


Air-Ops August 18, 2018

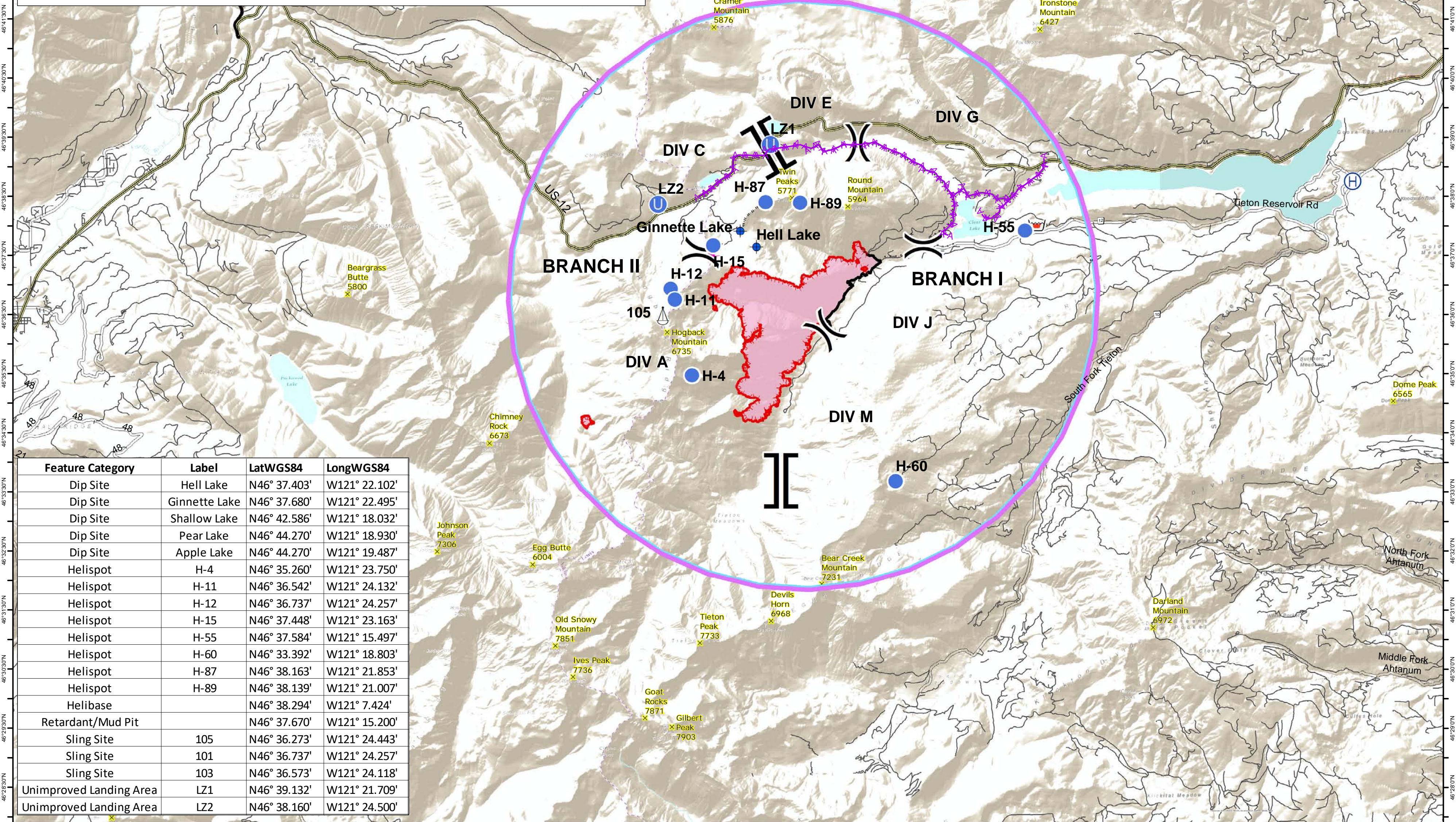


121°40'0"W 121°39'0"W 121°38'0"W 121°37'0"W 121°36'0"W 121°35'0"W 121°34'0"W 121°33'0"W 121°32'0"W 121°31'0"W 121°30'0"W 121°29'0"W 121°28'0"W 121°27'0"W 121°26'0"W 121°25'0"W 121°24'0"W 121°23'0"W 121°22'0"W 121°21'0"W 121°20'0"W 121°19'0"W 121°18'0"W 121°17'0"W 121°16'0"W 121°15'0"W 121°14'0"W 121°13'0"W 121°12'0"W 121°11'0"W 121°10'0"W 121°9'0"W 121°8'0"W 121°7'0"W 121°6'0"W 121°5'0"W

Miriam
WA-OWF-000443
2659 acres as of
8/16/18 @ 1837

Clear Fork
WA-GPF-000521
17 acres as of
8/16/18 @ 1837

- Dip Site
- Helibase
- Unimproved Landing Area
- Helispot
- Retardant/Mud Pit
- Sling Site
- Division Break
- Branch Break
- Uncontrolled Fire Edge
- Completed Line
- Completed Dozer Line
- Completed Hand Line
- Road as Completed Line
- Exposed Cable on Ground
- Powerlines
- TFR



Feature Category	Label	LatWGS84	LongWGS84
Dip Site	Hell Lake	N46° 37.403'	W121° 22.102'
Dip Site	Ginnette Lake	N46° 37.680'	W121° 22.495'
Dip Site	Shallow Lake	N46° 42.586'	W121° 18.032'
Dip Site	Pear Lake	N46° 44.270'	W121° 18.930'
Dip Site	Apple Lake	N46° 44.270'	W121° 19.487'
Helispot	H-4	N46° 35.260'	W121° 23.750'
Helispot	H-11	N46° 36.542'	W121° 24.132'
Helispot	H-12	N46° 36.737'	W121° 24.257'
Helispot	H-15	N46° 37.448'	W121° 23.163'
Helispot	H-55	N46° 37.584'	W121° 15.497'
Helispot	H-60	N46° 33.392'	W121° 18.803'
Helispot	H-87	N46° 38.163'	W121° 21.853'
Helispot	H-89	N46° 38.139'	W121° 21.007'
Helibase		N46° 38.294'	W121° 7.424'
Retardant/Mud Pit		N46° 37.670'	W121° 15.200'
Sling Site	105	N46° 36.273'	W121° 24.443'
Sling Site	101	N46° 36.737'	W121° 24.257'
Sling Site	103	N46° 36.573'	W121° 24.118'
Unimproved Landing Area	LZ1	N46° 39.132'	W121° 21.709'
Unimproved Landing Area	LZ2	N46° 38.160'	W121° 24.500'

121°40'0"W 121°39'0"W 121°38'0"W 121°37'0"W 121°36'0"W 121°35'0"W 121°34'0"W 121°33'0"W 121°32'0"W 121°31'0"W 121°30'0"W 121°29'0"W 121°28'0"W 121°27'0"W 121°26'0"W 121°25'0"W 121°24'0"W 121°23'0"W 121°22'0"W 121°21'0"W 121°20'0"W 121°19'0"W 121°18'0"W 121°17'0"W 121°16'0"W 121°15'0"W 121°14'0"W 121°13'0"W 121°12'0"W 121°11'0"W 121°10'0"W 121°9'0"W 121°8'0"W 121°7'0"W 121°6'0"W 121°5'0"W