

**Public Information Closures/Evacuations**

08/27/2018

**Miriam**

WA-OWF-000443  
4228 acres as of  
8/25/18 @ 0047

**Clear Fork**

WA-GPF-000521  
57 acres as of  
8/25/18 @ 0047

Road Closure

Closure Point

**Trail Closure**

Alternate route

Trail # 61 closed

PCT Closed

Ski Runs

**Evacuation Levels**

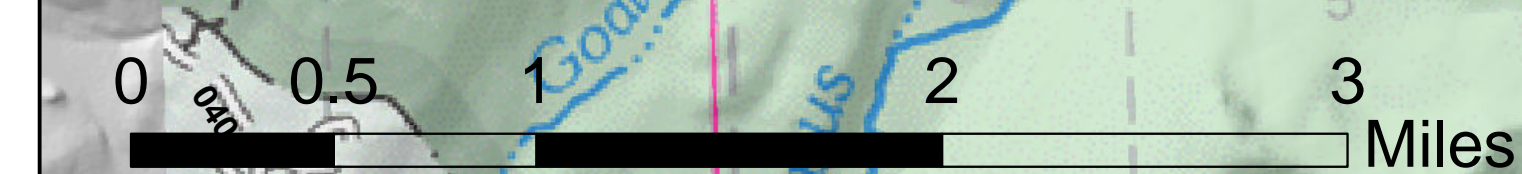
Level I

Level III

OWNF Closure Area

GPNF Closure Area

Current Fire Perimeter



121°31'30"W 121°30'0"W 121°28'30"W 121°27'0"W 121°25'30"W 121°24'0"W 121°22'30"W 121°21'0"W 121°19'30"W 121°18'0"W 121°16'30"W 121°15'0"W 121°13'30"W 121°12'0"W 121°10'30"W 121°9'0"W 121°7'30"W 121°6'0"W