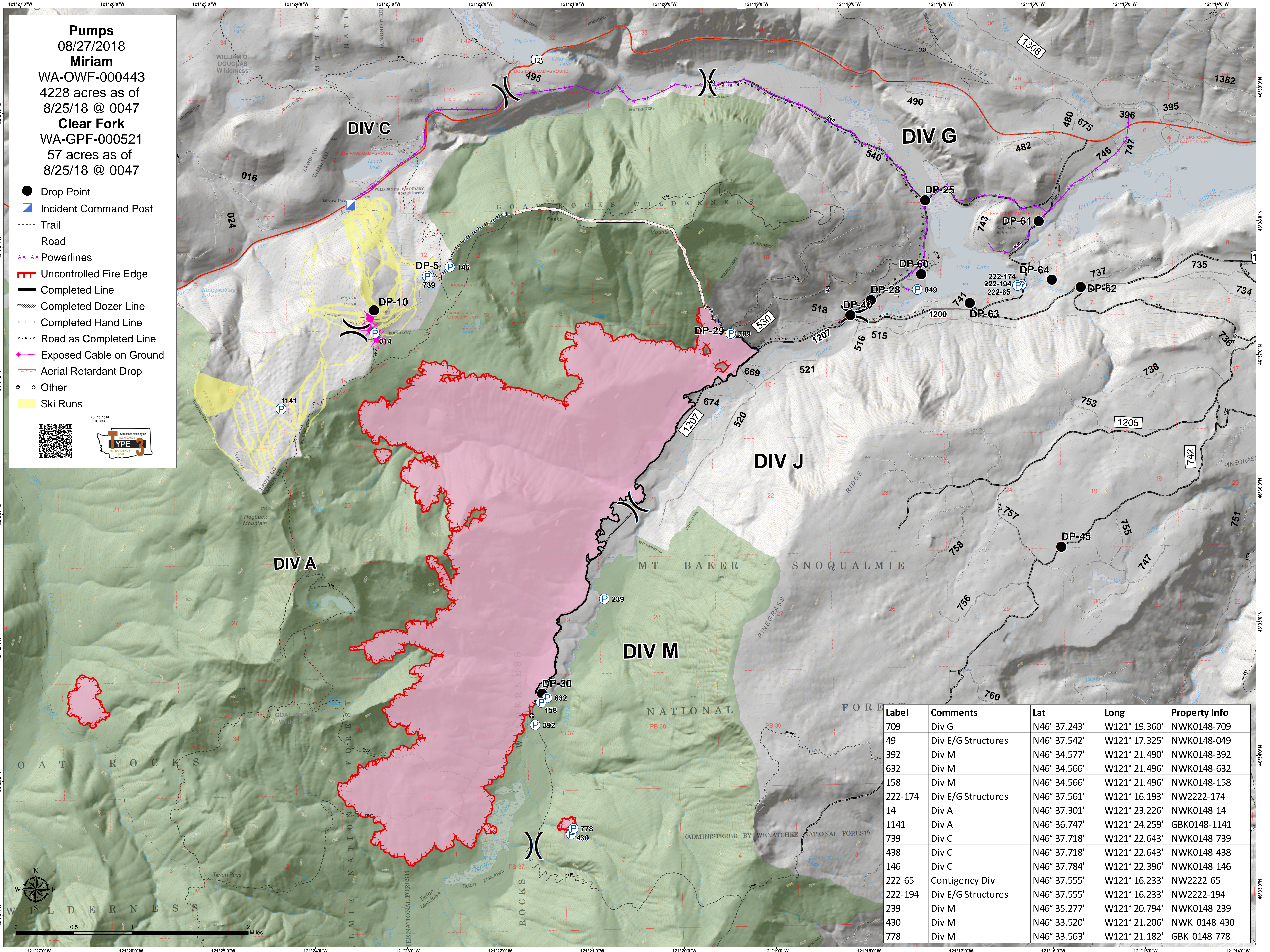
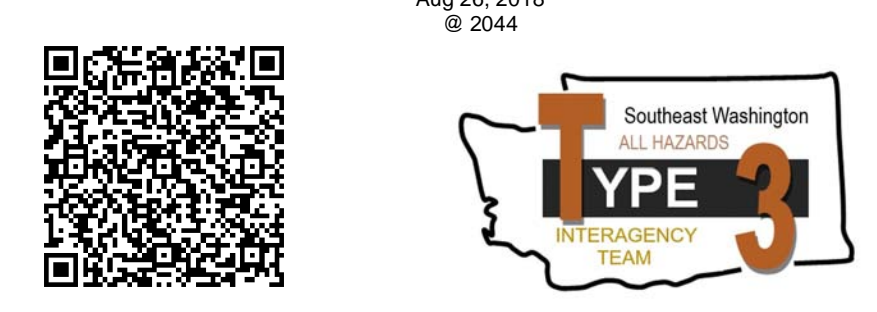


Pumps
 08/27/2018
Miriam
 WA-OWF-000443
 4228 acres as of
 8/25/18 @ 0047
Clear Fork
 WA-GPF-000521
 57 acres as of
 8/25/18 @ 0047

- Drop Point
- Incident Command Post
- Trail
- Road
- Powerlines
- Uncontrolled Fire Edge
- Completed Line
- Completed Dozer Line
- Completed Hand Line
- Road as Completed Line
- Exposed Cable on Ground
- Aerial Retardant Drop
- Other
- Ski Runs



Label	Comments	Lat	Long	Property Info
709	Div G	N46° 37.243'	W121° 19.360'	NWK0148-709
49	Div E/G Structures	N46° 37.542'	W121° 17.325'	NWK0148-049
392	Div M	N46° 34.577'	W121° 21.490'	NWK0148-392
632	Div M	N46° 34.566'	W121° 21.496'	NWK0148-632
158	Div M	N46° 34.566'	W121° 21.496'	NWK0148-158
222-174	Div E/G Structures	N46° 37.561'	W121° 16.193'	NW2222-174
14	Div A	N46° 37.301'	W121° 23.226'	NWK0148-14
1141	Div A	N46° 36.747'	W121° 24.259'	GBK0148-1141
739	Div C	N46° 37.718'	W121° 22.643'	NWK0148-739
438	Div C	N46° 37.718'	W121° 22.643'	NWK0148-438
146	Div C	N46° 37.784'	W121° 22.396'	NWK0148-146
222-65	Contingency Div	N46° 37.555'	W121° 16.233'	NW2222-65
222-194	Div E/G Structures	N46° 37.555'	W121° 16.233'	NW2222-194
239	Div M	N46° 35.277'	W121° 20.794'	NWK0148-239
430	Div M	N46° 33.520'	W121° 21.206'	NWK-0148-430
778	Div M	N46° 33.563'	W121° 21.182'	GBK-0148-778